



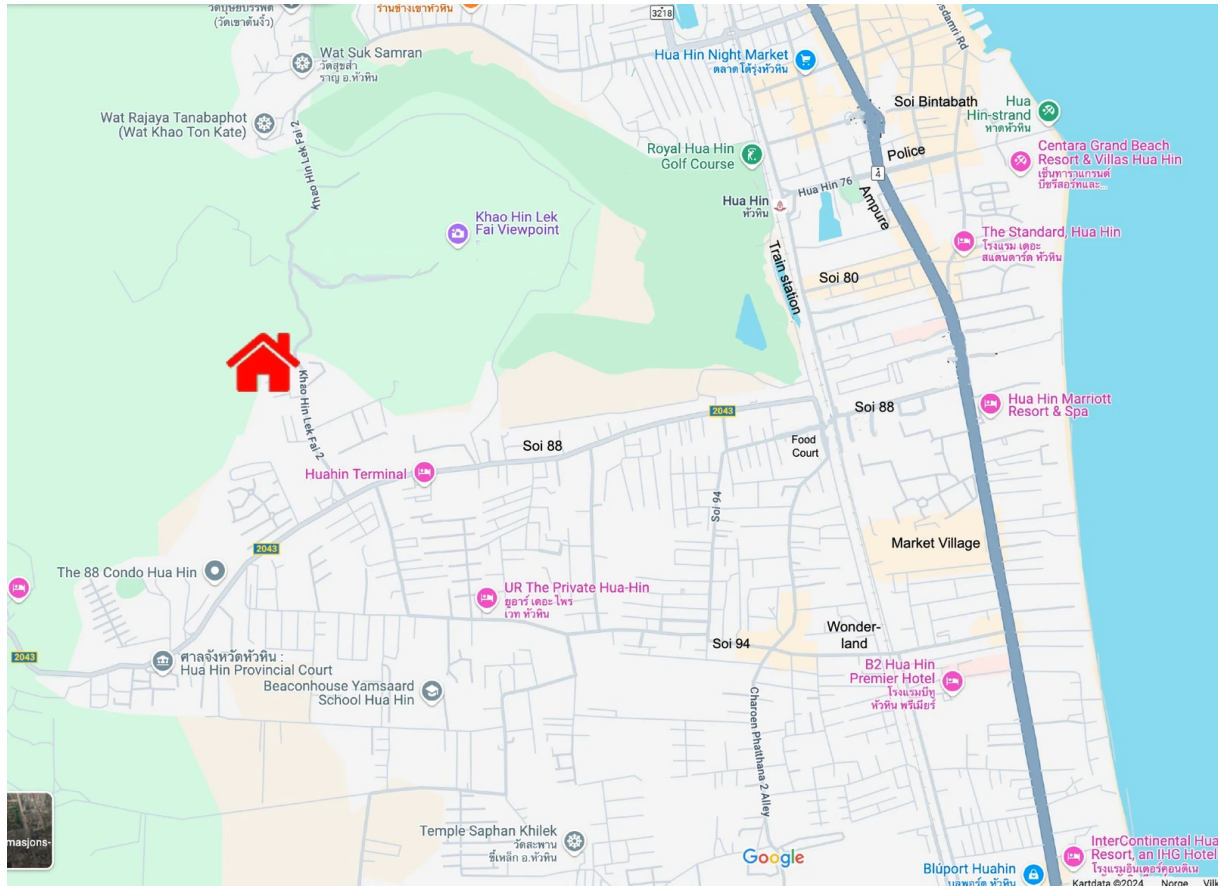
Luxurious 2-story pool villa, high standard, centrally located in Hua Hin.



Perfect for couples and families with children who want to stay in a quiet area, central to Hua Hin (almost walking distance to all attractions and activities in the city).

Location

Address: **38/14 Soi 88 Road Khao Phithak 14**



The property is located in a cul-de-sac, in a quiet and child-friendly environment, with beautiful mountain views and a short distance to hiking trails. Perfect for couples and families who want to live centrally in Hua Hin (Soi 88), with walking distance to everything you need (see map over):

- Shiva restaurant – 400 m.
- Khao Hin Lek Fai Viewpoint – 900 m.
- Tops – 1,000 m.
- Hua Hin Provincial Court – 1,200 m.
- Beaconhouse Yamsaard School Hua Hin – 1,700 m.
- Baan Khun Por Food Court – 2,100 m.
- Royal Hua Hin Golf Course – 2,700 m.
- Hua Hin Beach – 3,100 m.
- Bangkok Hospital – 3,100 m.
- Market Village Shopping Mall – 3,300 m.
- Blue Port Hua Hin Shopping Mall – 3,800 m.
- Hua Hin Night Market – 2,900 m.
- Hua Hin Train Station – 2,600 m.

Property

Land: 708 sq m.

House: 360 sq m.

Swimming pool: 12.5 x 5 m (salt water pool), with 2.5 x 2.5 m corner jacuzzi.

Rooms:

Living room, dining room, European kitchen, 3 bedrooms, 4 bathrooms, office with safe, gym with mirror wall, 2 large covered terraces (1st and 2nd floors).

Standard:

High ceilings, airy floor plan with lots of glass windows, fiber optic internet, 7 air-con, beautiful garden, child friendly.

Garden:

5 x 5 m trampoline and Salathai house in the garden.



Electricity:

Connected to public electricity grid, with its own electricity meter.

Water:

Connected to public water, with a separate water well in the garden as a backup solution for times without public water. 4000 liter water tank for swimming pool and 2000 liter underground water tank for the house.

Septic:

Underground septic tank.

Flooding:

The property is located in an area that is never exposed to flooding.

Neighborhood:

The property is located in a very quiet area, where you only hear birds and animals living their own lives at night, without disturbances from people, cars and motorcycles. Yet it is no more than 1-2 minutes on a motorcycle before you are where everything is happening.

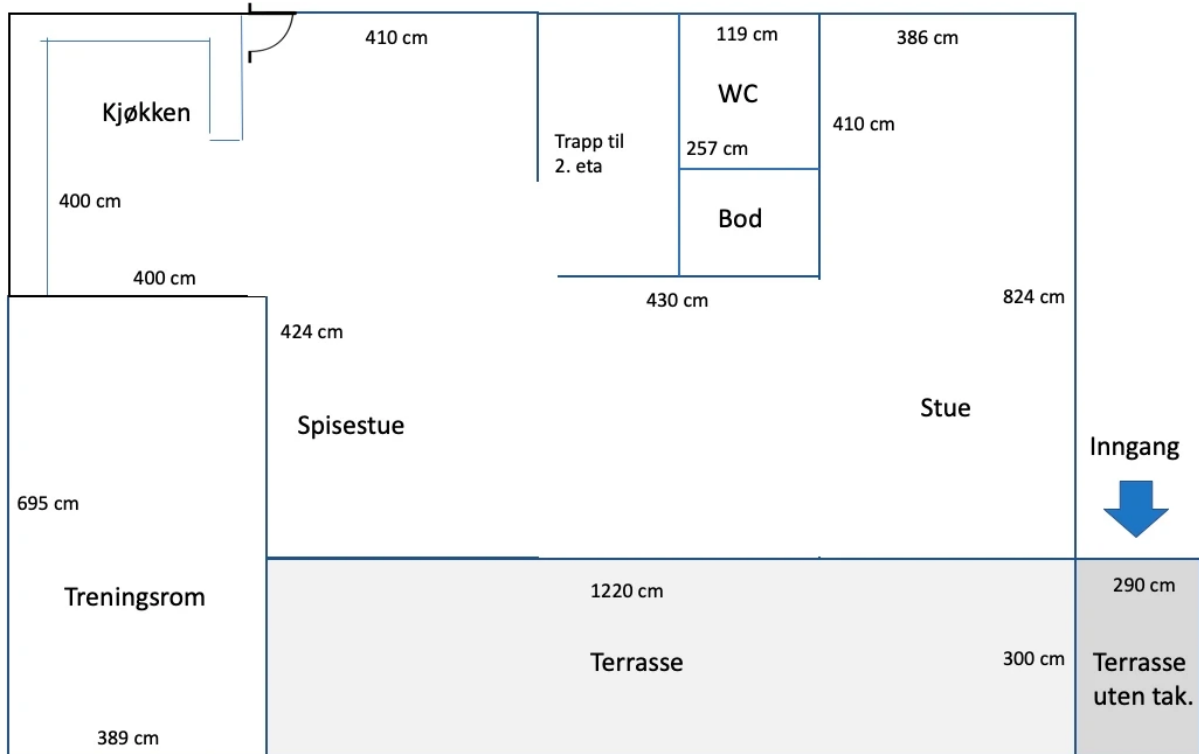
Freehold property. Sold fully furnished, and with company(ies) if desired. Foreigners can own the property without having a Thai citizen owning 51% (ask for more information if applicable).



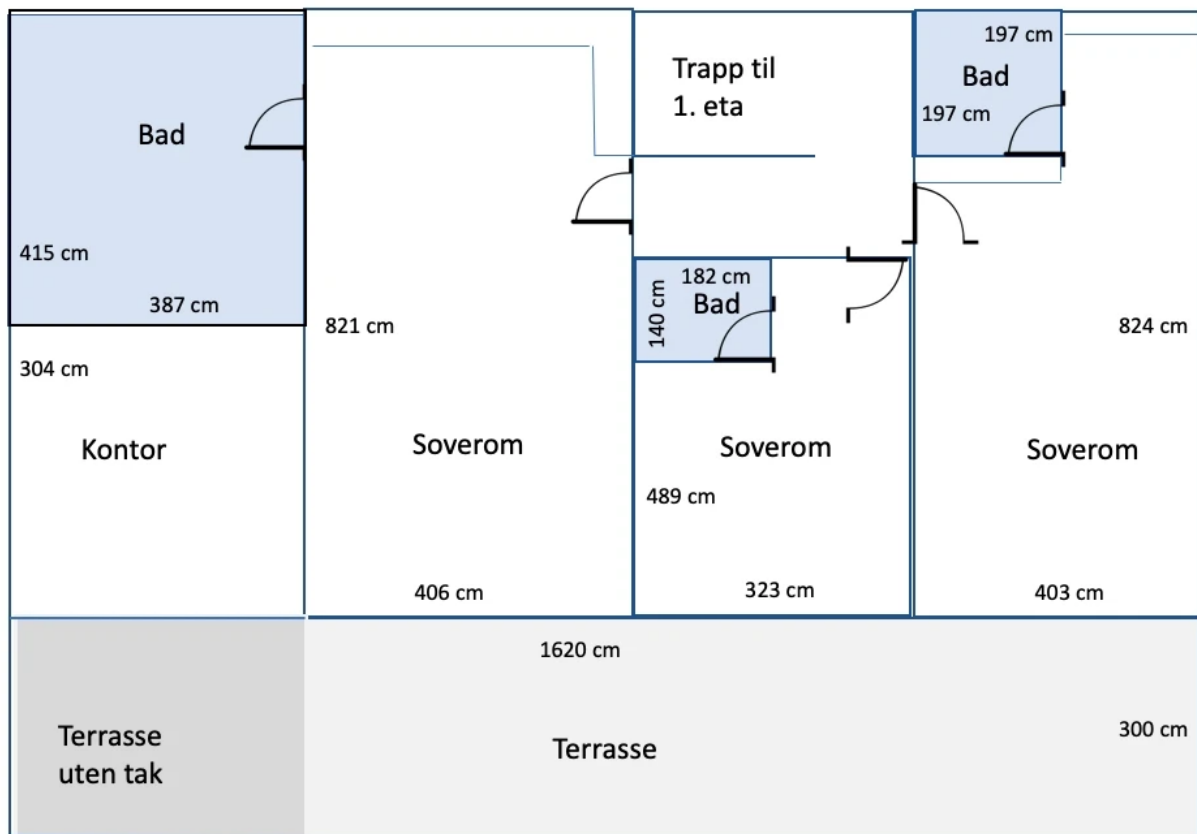
Call (+47) 4000 48 10 or send an mail to post@onnet.no for more information.

Floor plan

1 Floor



2 Floor



Terrace 1st floor.

48,6 sq m terrace under roof, with 10 mm tempered glass and aluminum doors to living room, dining room and gym. Outdoors speakers and tree fan.



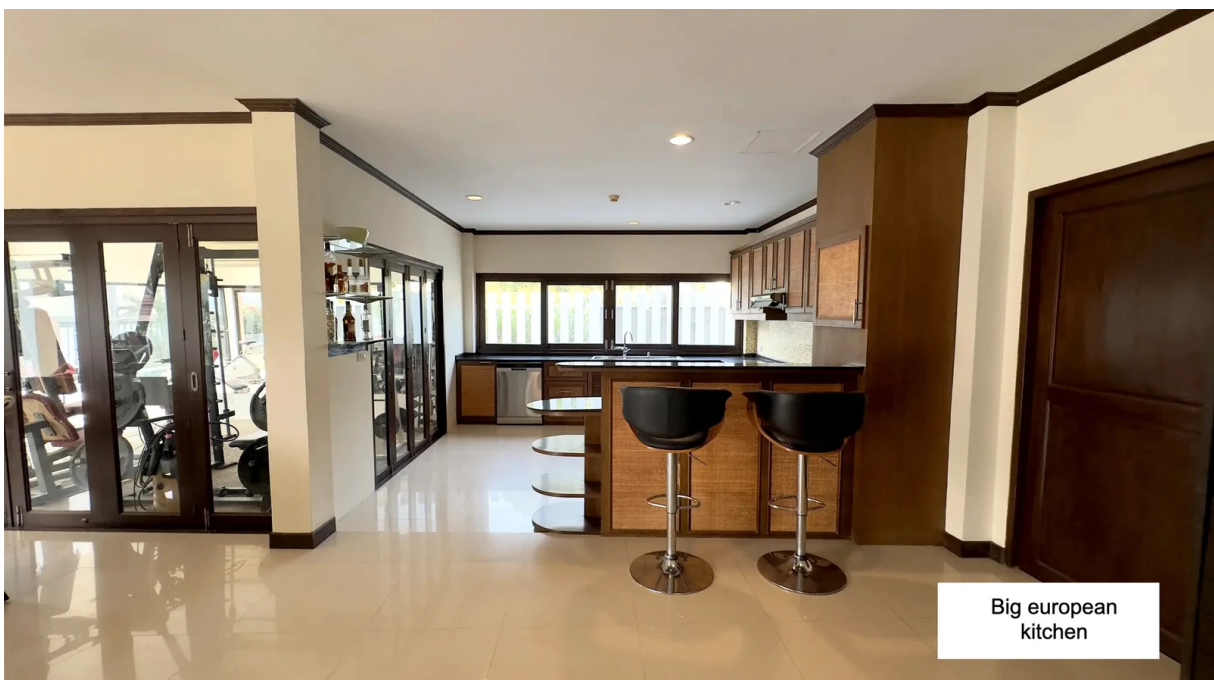
Kitchen

Large European kitchen, 16 sq m., with dishwasher, oven, microwave and 4 hotplates. Redwood windows and doors into gym.



Entrance

16.4 sq m, entrance area behind the kitchen bar, We use the area to store several refrigerators and freezers.



Dining room

17,4 sq m. dining room in an open solution with kitchen, entrance and living room. Aluminum doors to terrace on 1st floor.



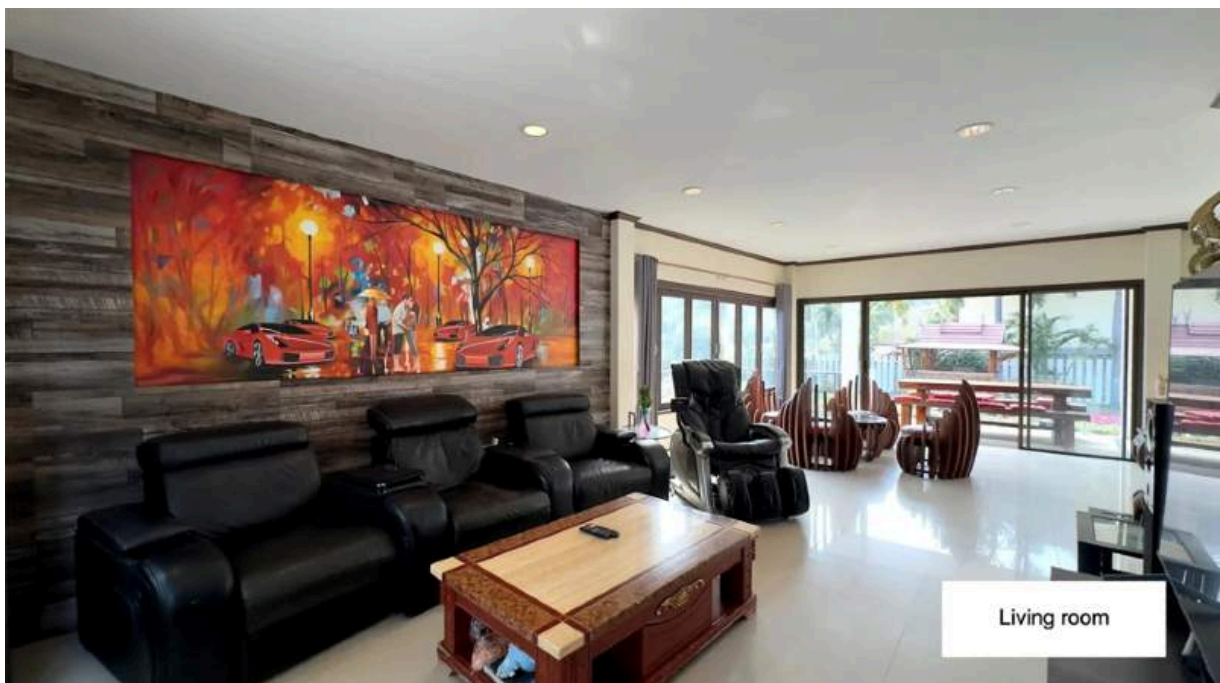
Living room

34,6 sq m. living room connected to dinner room and TV room, with aluminum doors to terrace on 1st floor.



TV Room

15,8 sq m. tv room with fiber optic internet cable. Huge air-con.



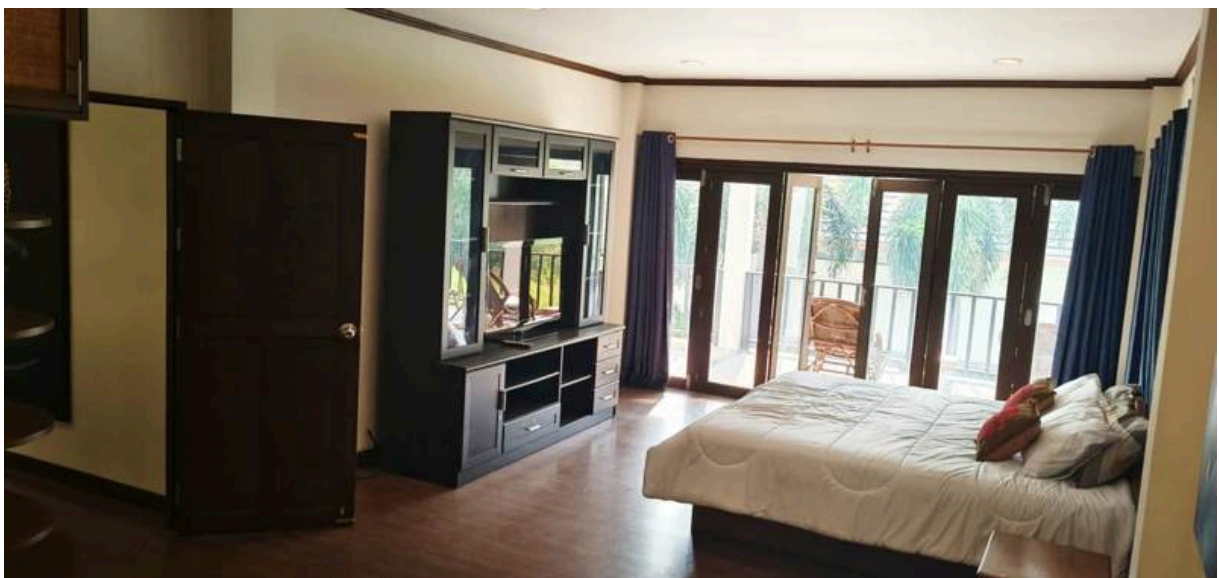
Gym

27,5 sq m. with one mirror wall, four speakers and two air-con. Aluminum windows and doors to terrace on the 1st floor. Red wood doors in to kitchen and dinner room.



Master bedroom

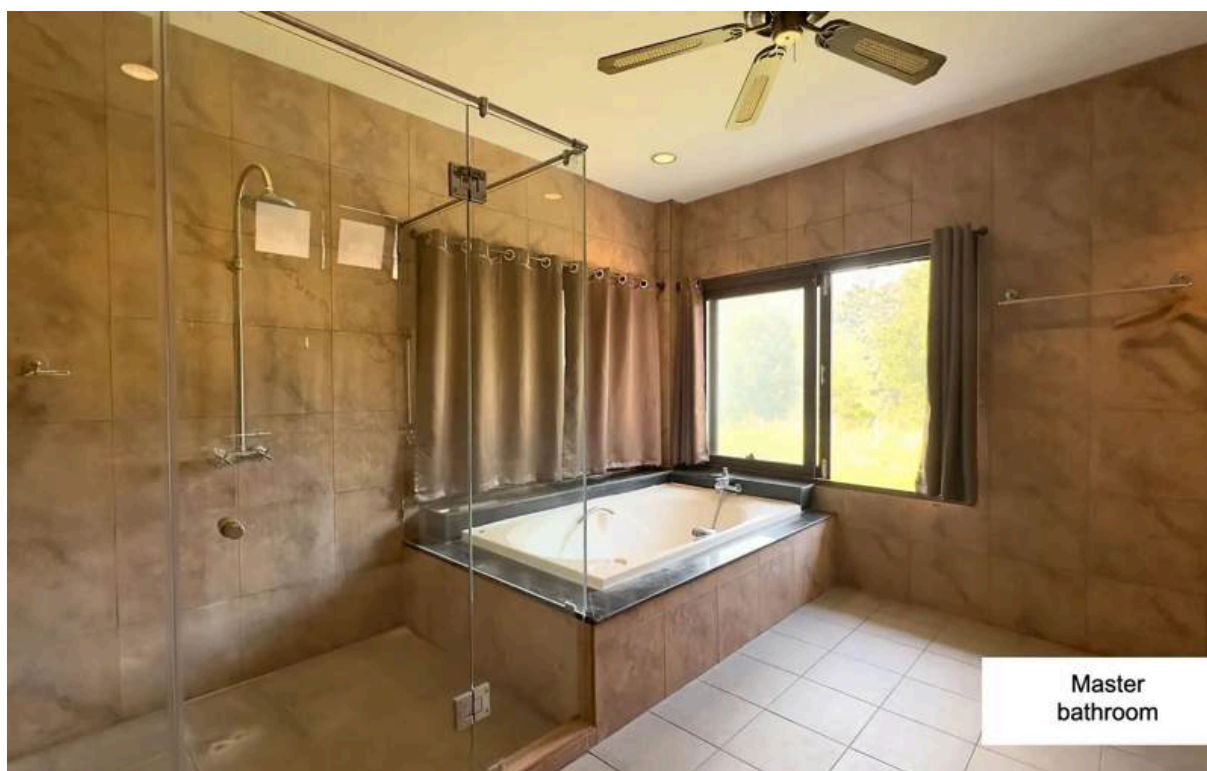
33 sq m. bedroom, with air-con and red wood glass doors out to terrace.





Master bathroom

16 sq m with bathroom with red wood windows. Shower, bathtub, toilet, bidet and washbasin, with mirror.



Big bedroom with bathroom

29 sq m. bedroom with air-con and red wood windows and glass doors out to terrace. Connects to a 4 sq m bathroom with shower, toilet, bidet, sink and mirror.



Small bedroom with bathroom

18 sq m. bedroom with air-con and aluminum glass doors to terrace. Connects to a 2,5 sq m bathroom with shower, toilet, bidet, sink and mirror.



Office

12 sq m. office with safe and air-con. Aluminum glass doors to terrace. Red wood windows to master bedroom.



Terrace 2nd floor.

