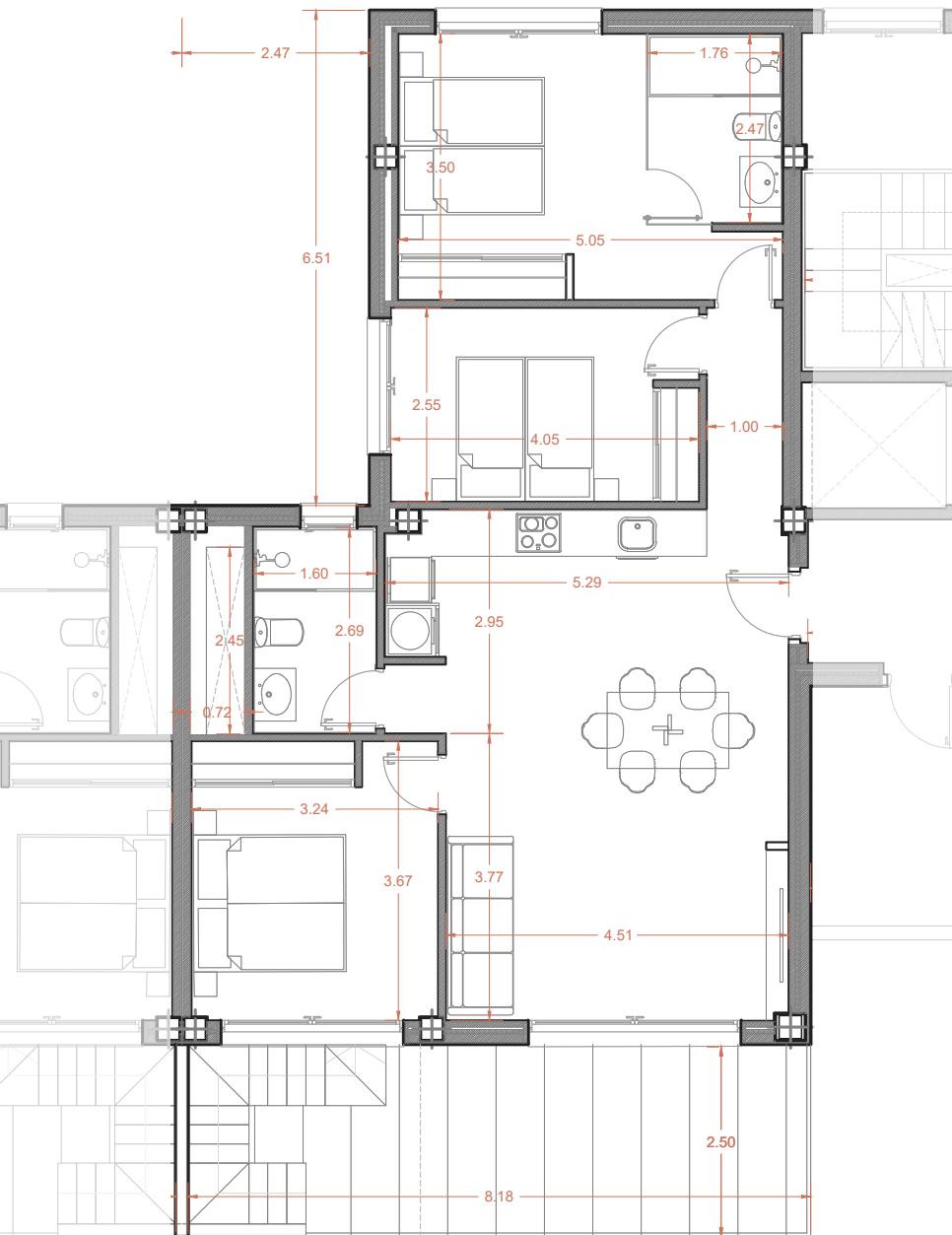
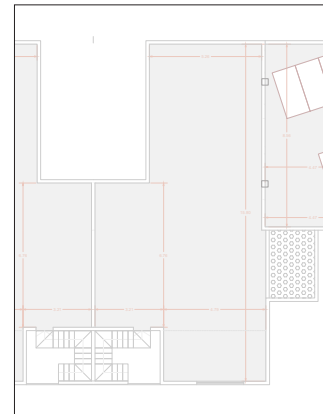


# HOUSE N.77 (TYPE E) 4TH FLOOR - BLOCK 3

THE IMAGES REFER TO APPROXIMATE SOLUTIONS AND ARE NOT BINDING WITH THE FINAL PROJECT



## 4TH FLOOR TYPE E



**SOLARIUM 100,00 M2**

## BUILT SURFACE 111,40 M2

LIVING ROOM KITCHEN	31,50 M2
BEDROOM 1	13,00 M2
BEDROOM 2	11,70 M2
BEDROOM 3	10,30 M2
BATHROOM 1	4,30 M2
BATHROOM 2	4,30 M2
CORRIDOR	2,65 M2
COVERED TERRACE 50%%	10,20 M2
<b>TOTAL USABLE SURFACE</b>	<b>87,95 M2</b>

1 X BASEMENT PARKING

