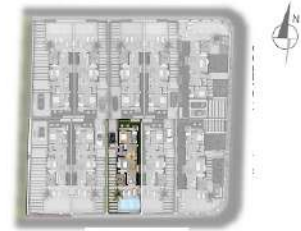


vivienda 3



PLANTA BAJA GROUND FLOOR

superficies útiles
useful floor area

| | |
|--|-------|
| 1 - hall - escalera hall - stairs | 13.75 |
| 2 - salón - comedor - cocina living - dining room - kitchen | 44.00 |
| 3 - aseó toilet | 2.55 |
| 4 - dormitorio 1 bedroom 1 | 13.70 |
| 5 - baño 1 bathroom 1 | 5.40 |
| 6 - porche cubierto covered porch | 2.40 |
| 7 - terraza cubierta covered terrace | 12.70 |

METROS ÚTILES PLANTA BAJA
GROUND FLOOR USEFUL METERS 94.50

METROS CONSTRUIDOS P. BAJA
GROUND FLOOR BUILD-UP METERS 111.00



PLANTA ALTA TOP FLOOR

superficies útiles
useful floor area

| | |
|--------------------------------------|-------|
| 8 - paso pass | 10.35 |
| 9 - dormitorio suite master suite | 22.00 |
| 10 - baño suite suite bathroom | 7.65 |
| 11 - dormitorio 2 bedroom 2 | 13.05 |
| 12 - dormitorio 3 bedroom 3 | 13.20 |
| 13 - baño 2 bathroom 2 | 4.60 |

METROS ÚTILES PLANTA ALTA
TOP FLOOR USEFUL METERS 70.85

METROS CONSTRUIDOS P. ALTA
TOP FLOOR BUILD-UP METERS 92.40

TOTAL METROS ÚTILES
TOTAL USEFUL METERS 165.35

TOTAL METROS CONSTRUIDOS
TOTAL BUIL-UP METERS 203.40

PARCELA PLOT AREA

TOTAL METROS DE PARCELA
TOTAL PLOT AREA METERS 322.25

p - parking cubierto
carport 32.15