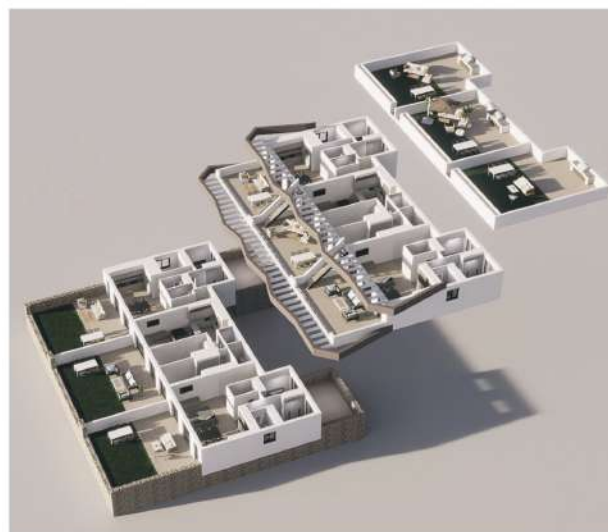
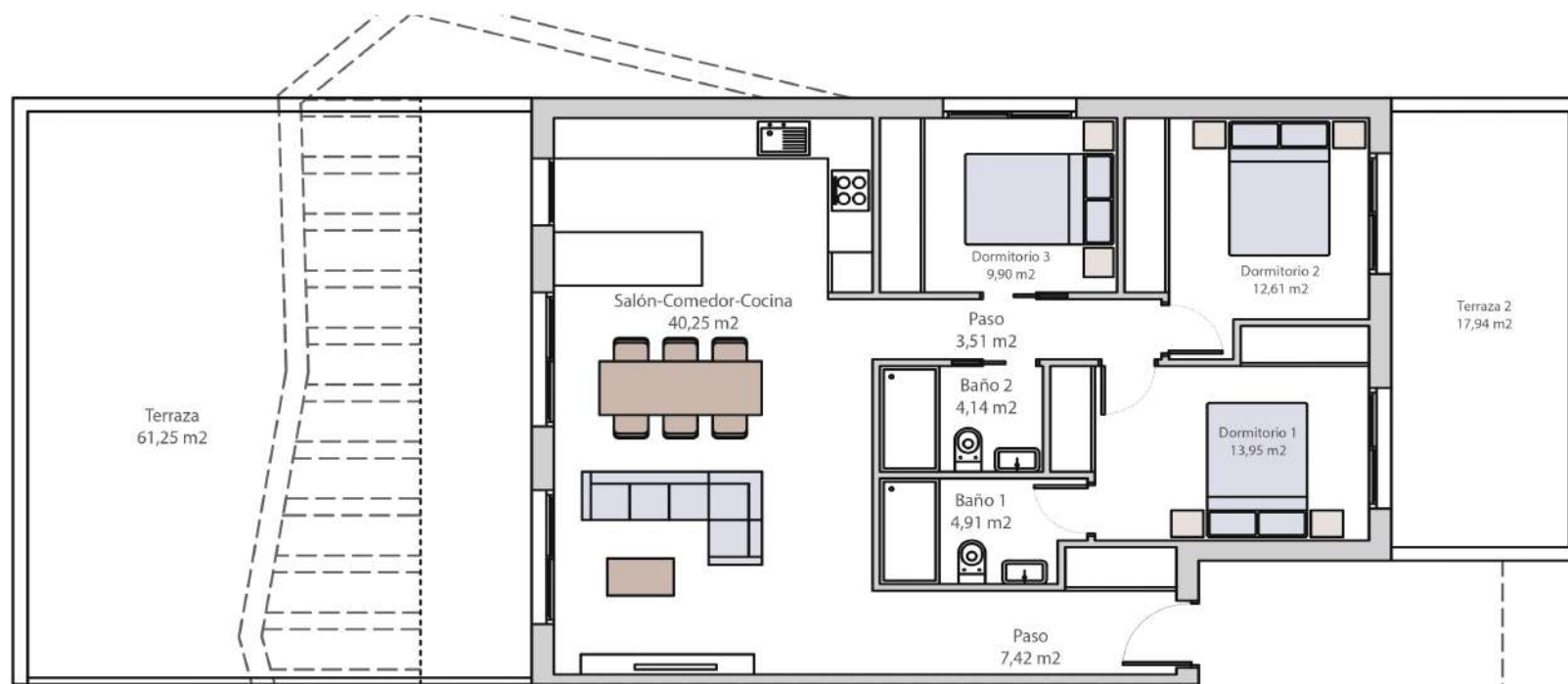
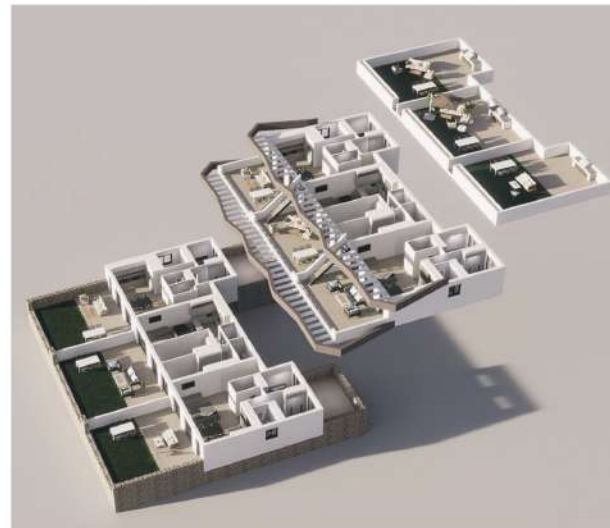
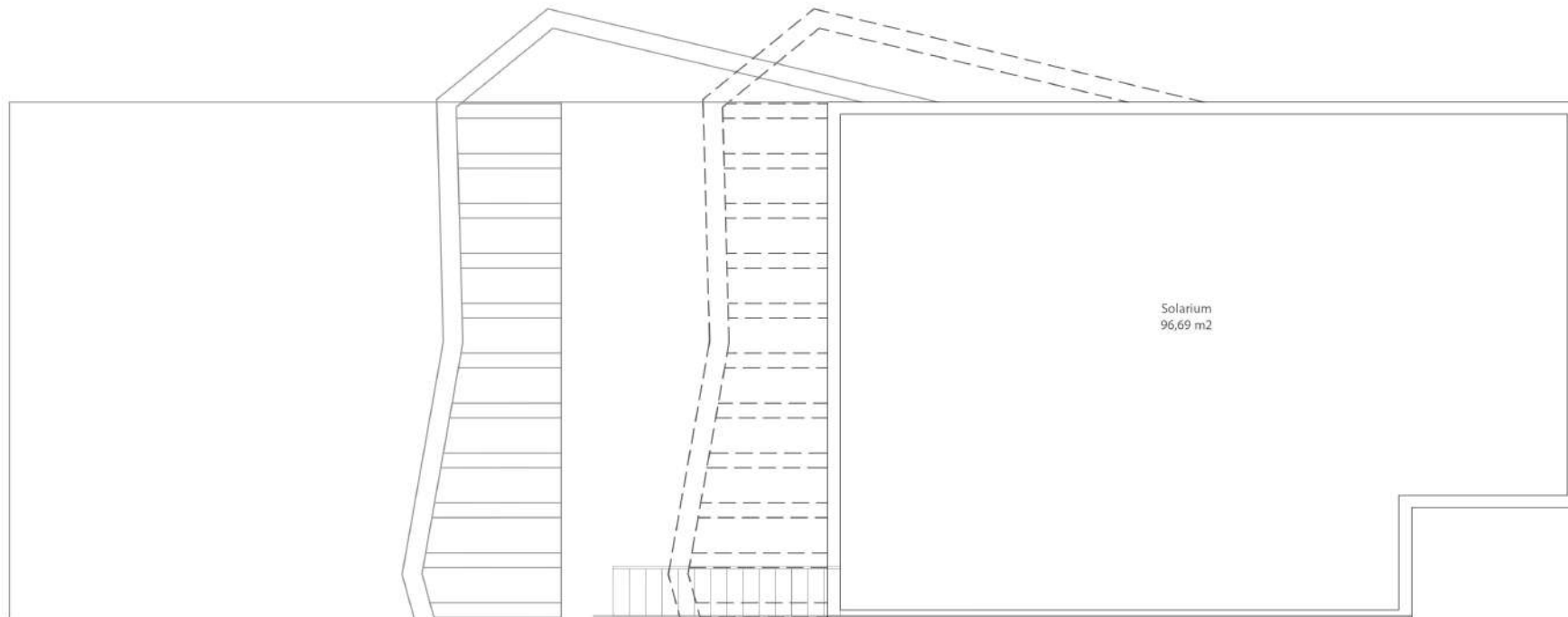


MASTERPLAN





SUPERFICIES	
Planta Baja	96,69 m ²
Terraza 1	61,25 m ²
Terraza 2	17,94 m ²
Total	175,88 m²

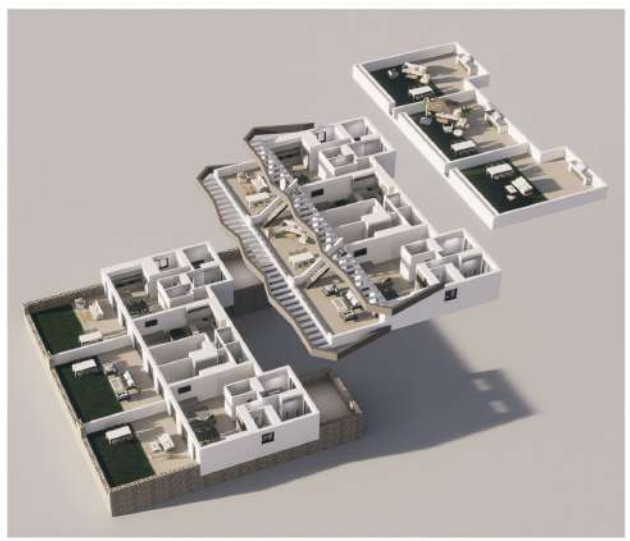


SUPERFICIES

Planta Primera	96,69 m2
Terraza 1	35,87 m2
Solarium	96,69 m2
Total	229,25 m2

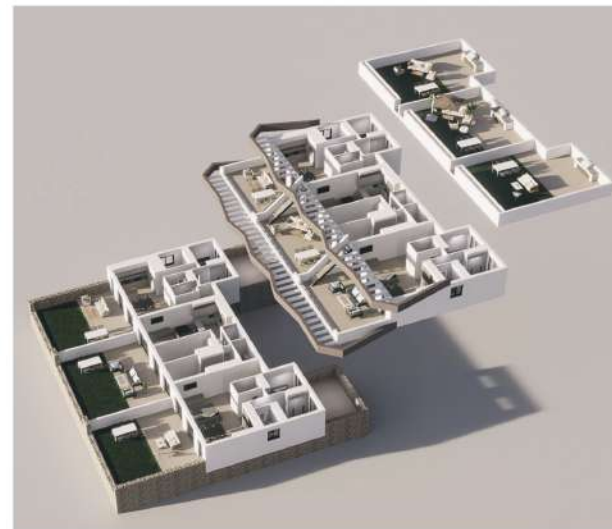
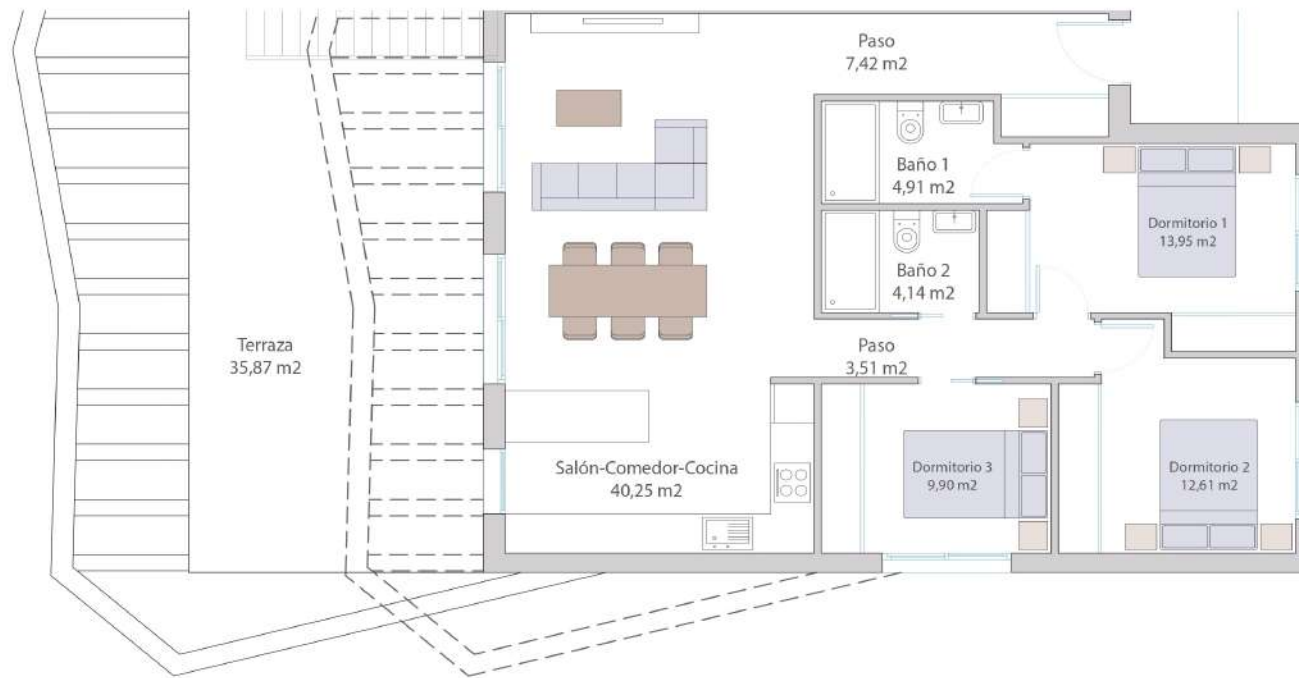
PLANTA BAJA

VIVIENDA n° - 17

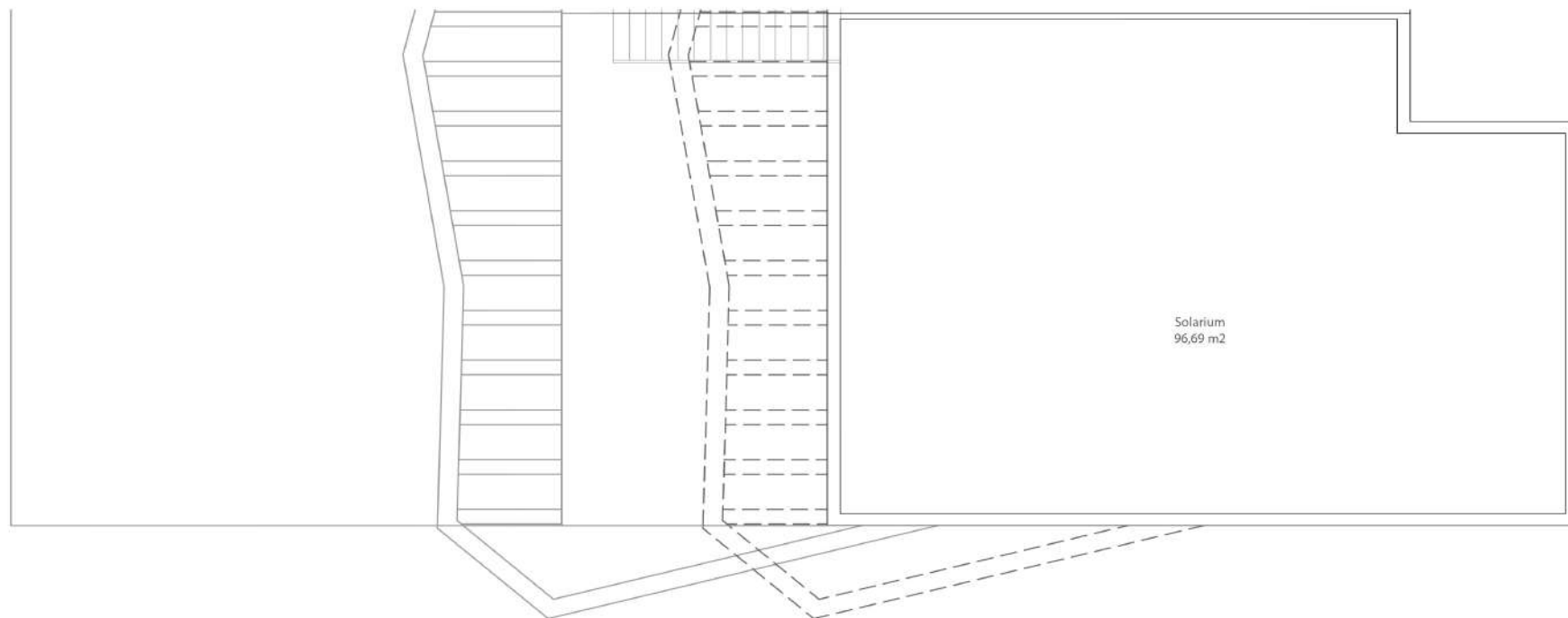


SUPERFICIES	
Planta Baja	96,69 m2
Terraza 1	182,01 m2
Terraza 2	17,94 m2
Total	296,64 m2

LAS DIMENSIONES Y LAS SUPERFICIES QUE APARECEN EN ESTE DOCUMENTO SON APROXIMADAS Y PODRAN SER OBJETO DE MODIFICACION DURANTE LA REDACCION DE LOS PROYECTOS BASICO Y DE EJECUCION



SUPERFICIES	
Planta Primera	96,69 m2
Terraza 1	35,87 m2
Solarium	96,69 m2
Total	229,25 m2



SUPERFICIES	
Planta Primera	96,69 m2
Terraza 1	35,87 m2
Solarium	96,69 m2
Total	229,25 m2