



**La
Nucía Pines**

Welcome to La Nucía Pines

Living in a natural environment, with sunshine almost all year round and all essential services just a stone's throw away, is possible at **La Nucía Pines**.

Nestled in the heart of the Costa Blanca, in the charming town of La Nucía, this exclusive development of apartments offers a perfect blend of tranquillity, nature, and comfort, providing you with the lifestyle you have always dreamed of.

At **La Nucía Pines**, you will discover a unique setting where every day invites you to enjoy the surroundings and the exceptional climate of this sought-after area of Spain. **The development, located in the prestigious Ciudad del Deporte**, ensures the convenience of having all essential services within easy reach: a brand-new shopping centre, pharmacies, supermarkets, and a diverse selection of restaurants, all just steps from your home.





Light, serenity and nature in harmony

At **La Nucía Pines**, you will find 64 exclusive homes, distinguished by their spacious terraces, perfect for enjoying the wonderful Costa Blanca climate all year round.

Choose from apartments and penthouses with up to 104 m² of built space, offering 2 or 3 bedrooms and 2 bathrooms, designed to suit different lifestyles.

The interior layout is designed for fluidity, featuring an open-plan living and dining area and a fully fitted kitchen with an island, creating a stylish and light-filled space.





















Your home, in perfect harmony with nature

At **La Nucía Pines**, every home has been thoughtfully designed to maximise natural light, embrace the exceptional Mediterranean climate, and blend seamlessly with its natural surroundings.

For those seeking an even more exclusive experience, the penthouses feature private solariums of up to 110 m², ideal for enjoying the tranquillity of the landscape, panoramic views, and unforgettable moments under the Mediterranean sky.

The ground-floor apartments stand out with expansive terraces ranging from 25 m² to 259 m², inviting you to relax outdoors and soak up the serene atmosphere.





Leisure time, your way

Life at **La Nucía Pines** extends beyond the walls of your home —this is a lifestyle designed to exceed expectations and provide maximum comfort.

Take a refreshing dip in the pool, while children can play in the dedicated kids' park or cool off in their own swimming pool. Stay active without leaving home by making use of the fully equipped gym.

For moments of socialising and connection, the social club is the perfect place to gather with friends and neighbours, enjoy great conversations, and create lasting memories in a modern and welcoming environment.

Additionally, convenience is a priority at **La Nucía Pines**. Every home includes a spacious private parking space and a practical storage room, offering the peace of mind of having everything well-organised and within easy reach.













CLUB SOCIAL

GIMNASIO







LA NUCÍA
PINES



LA NUCÍA PINES





The first exclusive development in La Nucía's City of Sport

The area surrounding **La Nucía Pines** offers the perfect balance between nature's tranquillity and the convenience of urban living. Here, you'll enjoy a peaceful atmosphere, surrounded by pine trees and Mediterranean sunshine, while being just minutes away from beaches, essential services, and a vibrant urban lifestyle.

Right on your doorstep, a brand-new shopping centre will become a key part of your daily routine, offering a wide range of shops and services, including an Aldi supermarket and well-known retailers such as JYSK, TEDi, Sprinter, Pepco, Popeyes, and Burger King, among many others.

Moreover, if you're a sports enthusiast, this is your dream neighborhood. La Nucía Pines is the first residential complex located in La Nucía's City of Sport, an international sports and wellness hub boasting over 400,000 m² of world-class facilities for all kinds of sports. Among its highlights, you'll find the David Ferrer Tennis Academy, the Camilo Cano Olympic Stadium, Spain's largest surf park, and a Soccer Centre. Additionally, a high-performance golf training centre by the renowned TopGolf is currently under development.

For families, the new Vallemar International School is being built in this up-and-coming neighbourhood, ensuring excellent educational opportunities for children.





1.- Shopping Center 2.- Vallemar International School 3.- Public School 4.- Public High School 5.- David Ferrer Tennis Academy 6.- Muixara Sports Centre

7.- Hotel 8.- TopGolf 9.- Wave Pool 10.- Soccer Center 11.- Camilo Cano Olympic Stadium 12.- Stadium 13.- Sports City

La Nucía: Well-being and connection with what matters most

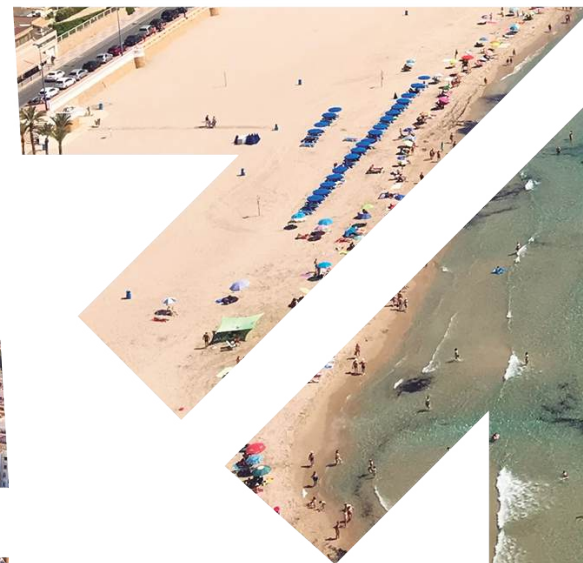
The La Nucía area provides everything you need for daily life, including supermarkets, pharmacies, restaurants, shopping centres, and medical facilities, all within easy reach.

The development enjoys excellent transport connections. In just 15 minutes by car, you can reach Benidorm, with its iconic beaches and vibrant entertainment scene. If you wish to explore further along the Costa Blanca, Alicante is only 30 minutes away, while the picturesque town of Altea is just 12 minutes away.

For travel further afield, Alicante-Elche Miguel Hernández Airport is only 45 minutes away by car, making both domestic and international travel effortlessly convenient.

At **La Nucía Pines**, living in tranquillity surrounded by nature doesn't mean sacrificing comfort or easy access to everything that makes the Costa Blanca so special. Here, you will find the perfect balance between well-being, accessibility, and an exceptional quality of life.





Distances to nearby towns and tourist attractions

1. **La Nucía town centre** - 5 min by car
2. **Alicante-Elche Airport** - 45 min by car
3. **Benidorm** - 15 min by car
4. **Polop de la Marina** - 12 min by car
5. **Altea** - 18 min by car
6. **Cuevas de Almanzora** - 15 min by car
7. **Guadalest** - 15 min by car
8. **Fuentes de Algar** - 18 min by car
9. **Parque Natural del Peñón de Ifach** - 38 min by car
10. **Cala Moraig** - 50 min by car





- | | | | |
|--|---|---|---|
|  BEACHES |  GOLF COURSES |  SHOPPING CENTRES |  SPORTS CENTRES |
|  SCHOOLS/ HIGH SCHOOLS |  HOSPITALS |  AMUSEMENT PARK |  SUPERMARKETS |

Floor Plans

At **La Nucía Pines**, choose the home and layout that best suits your lifestyle, always enjoying the maximum comfort and natural light that define this development.

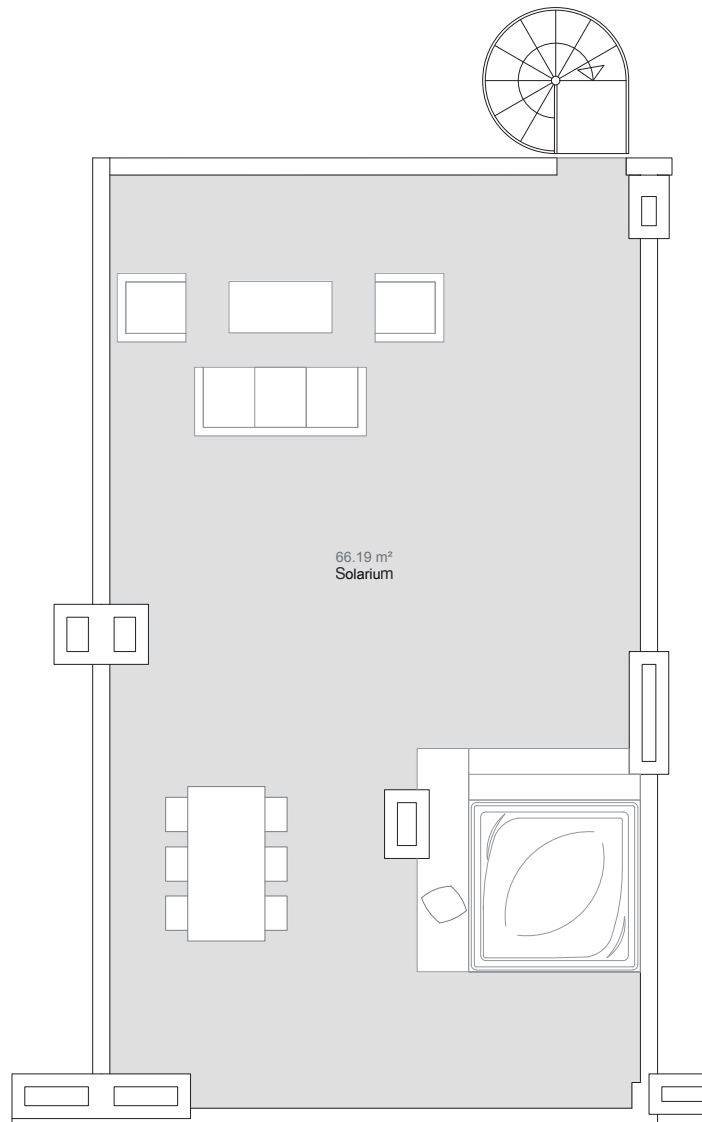
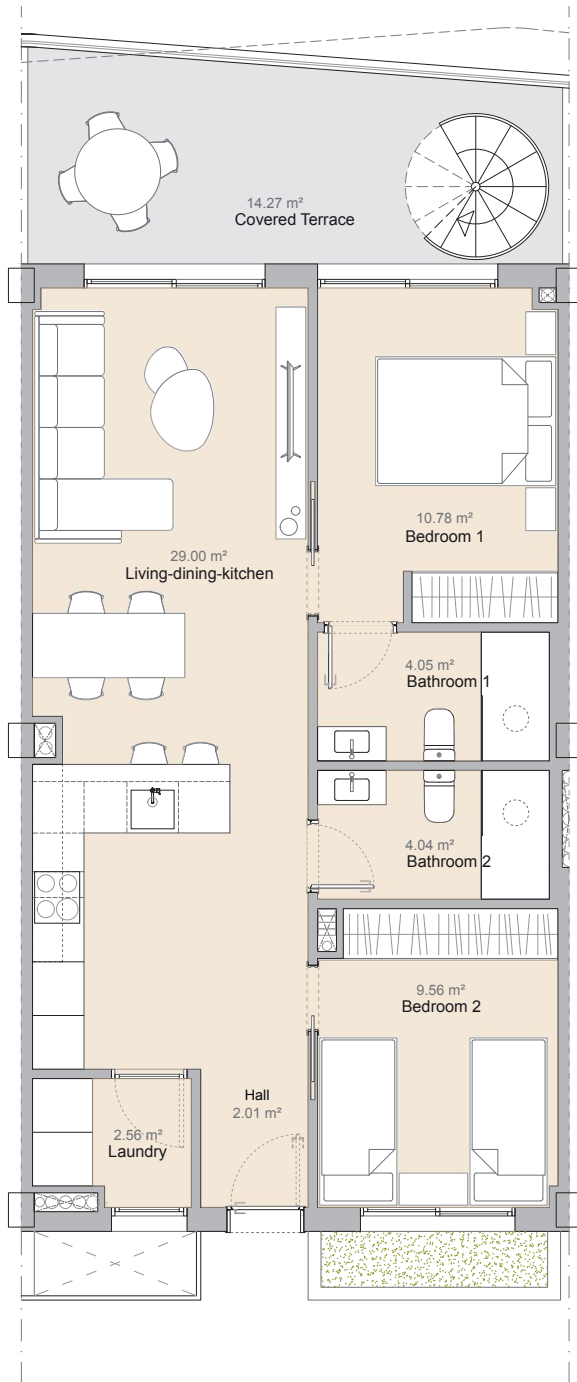
Type A Homes (2 bedrooms, 2 bathrooms) Built area: 71.90 m² - Terrace: 15 m² (variable)

Type B Homes (2 bedrooms, 2 bathrooms) Built area: 76.86 m² - Terrace: 40 m² (variable)

Type C Homes (3 bedrooms, 2 bathrooms) Built area: 95.80 m² - Terrace: 25 m² (variable)

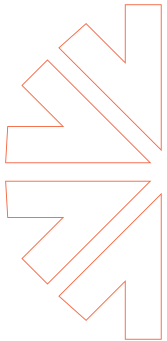
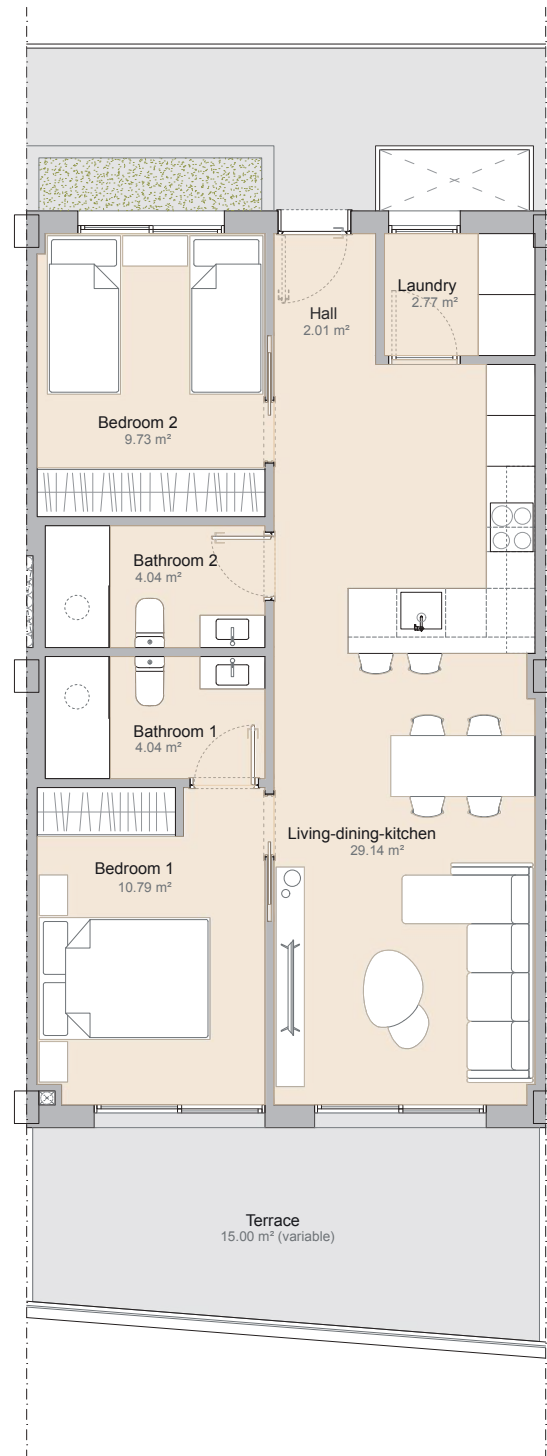
Type D Homes (3 bedrooms, 2 bathrooms) Built area: 104.29 m² - Terrace: 35 m²





	Usable surface area	Constructed area
Hall	2.01 m ²	
Living-dining-kitchen	29 m ²	
Laundry	2.56 m ²	
Bedroom 1	10.78 m ²	
Bathroom 1	4.05 m ²	
Bedroom 2	9.56 m ²	
Bathroom 2	4.04 m ²	
Total Interior Living	62 m²	71.90 m²
Covered Terrace*	14.27 m ²	15.58 m ²
Solarium	66.19 m ²	
Total Exterior Housing	80.46 m²	15.58 m²
Total House	142.46 m²	87.48 m²

* Variable surface depending on the floor and dwelling



	Usable surface area	Constructed area
Hall	2.01 m²	
Living-dining-kitchen	29.14 m²	
Laundry	2.77 m²	
Bedroom 1	10.79 m²	
Bathroom 1	4.04 m²	
Bedroom 2	9.73 m²	
Bathroom 2	4.04 m²	

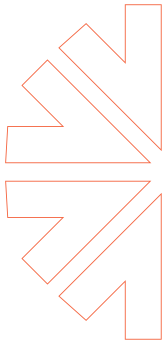
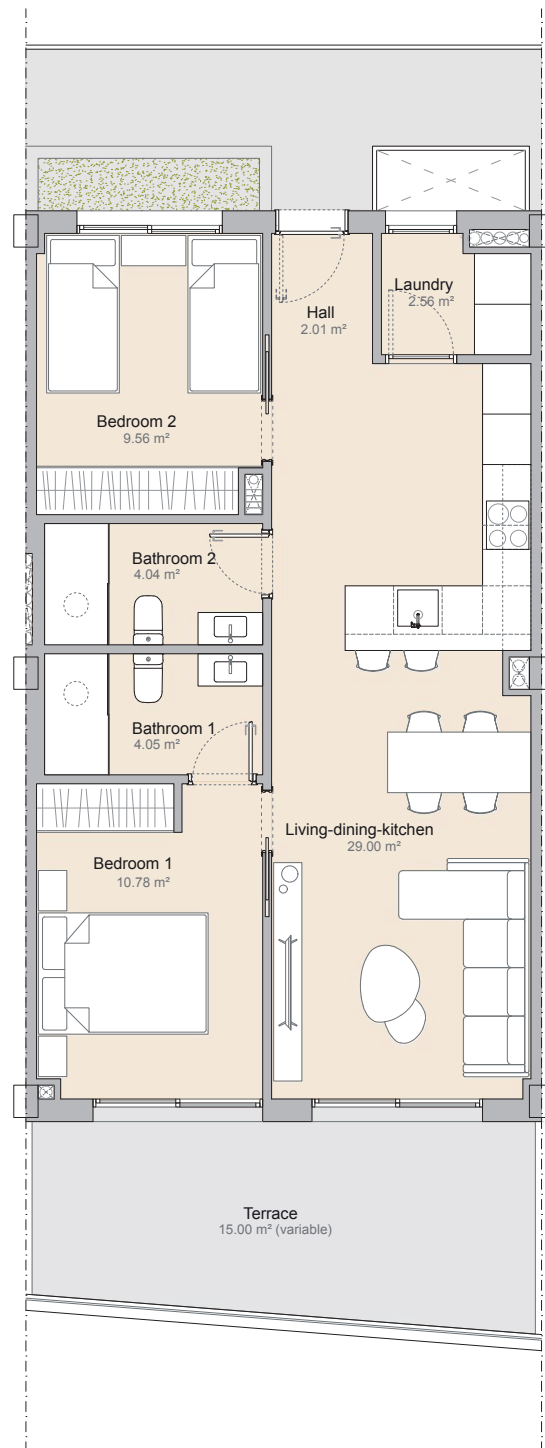
Total Interior Living	62.52 m²	71.90 m²
------------------------------	----------	----------

Covered Terrace*	13.92 m²	15.10 m²
-------------------------	----------	----------

Total Exterior Housing	13.92 m²	15.10 m²
-------------------------------	----------	----------

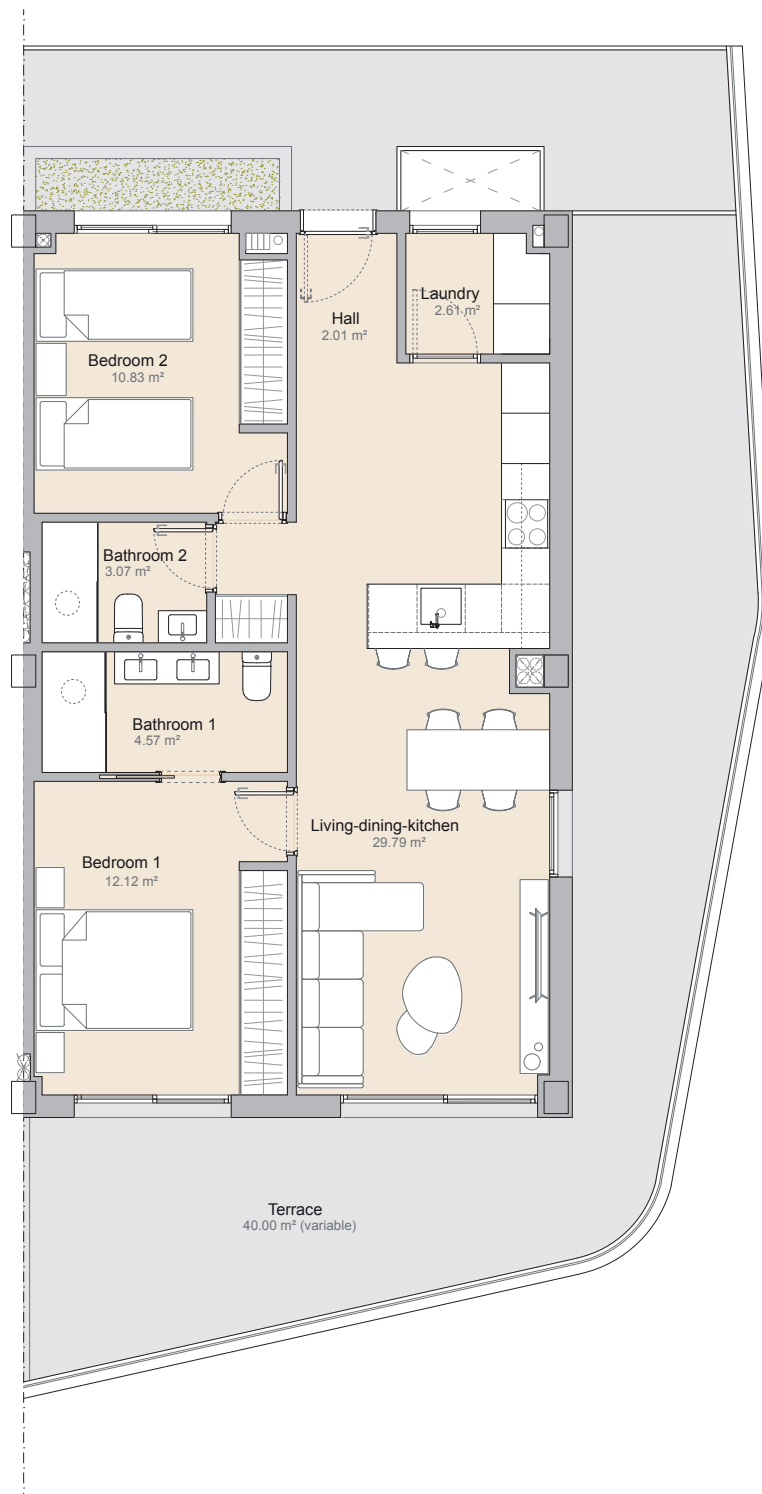
Total House	76.44 m²	87 m²
--------------------	----------	-------

* Variable surface depending on the floor and dwelling



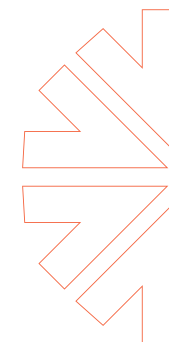
	Usable surface area	Constructed area
Hall	2.01 m ²	
Living-dining-kitchen	29 m ²	
Laundry	2.56 m ²	
Bedroom 1	10.78 m ²	
Bathroom 1	4.05 m ²	
Bedroom 2	9.56 m ²	
Bathroom 2	4.04 m ²	
Total Interior Living	62 m²	71.90 m²
Covered Terrace*	13.92 m ²	15.10 m ²
Total Exterior Housing	13.92 m²	15.10 m²
Total House	75.92 m²	87 m²

* Variable surface depending on the floor and dwelling



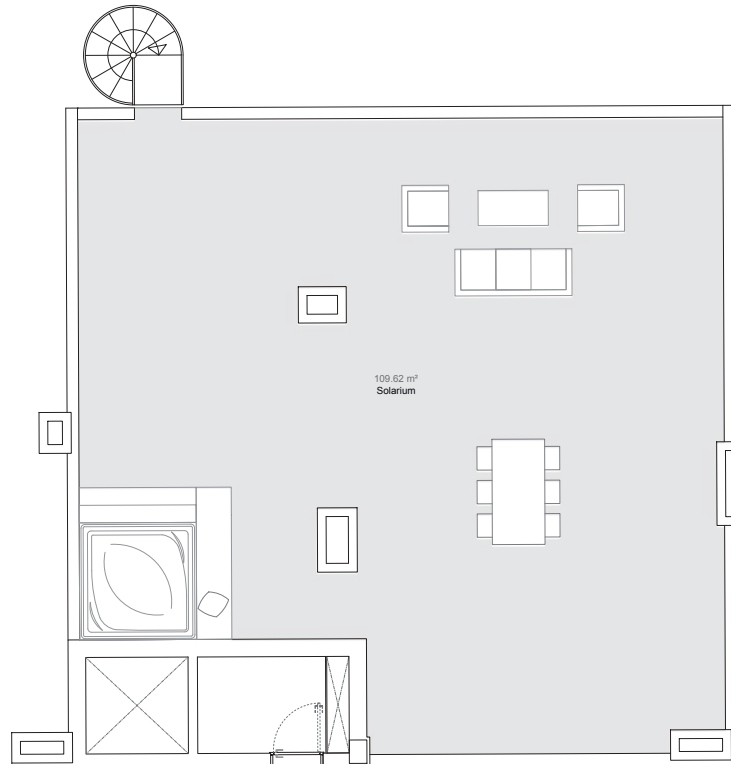
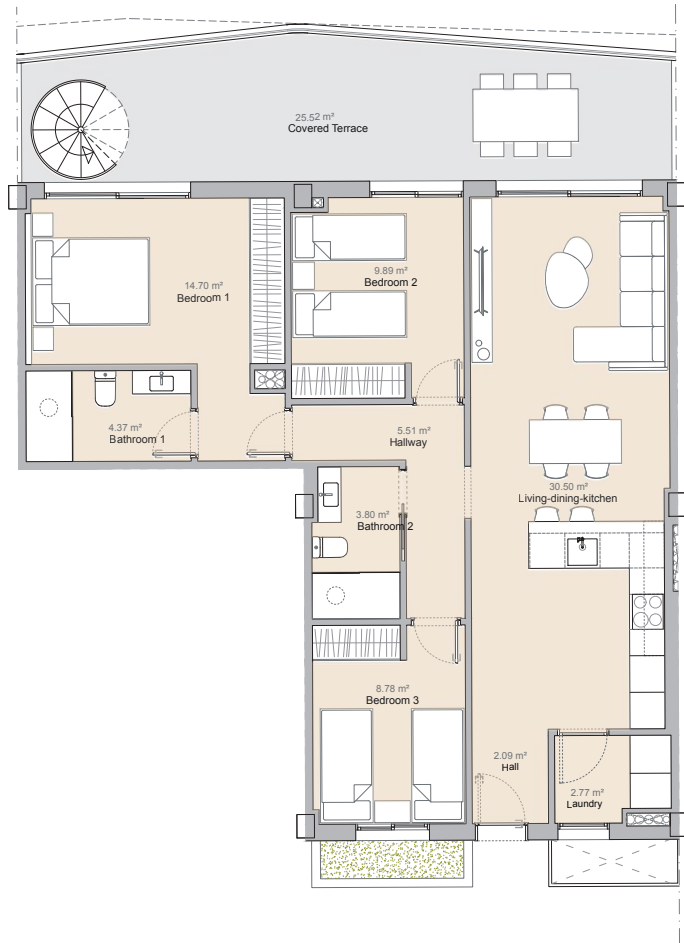
 **La
Nucía Pines**

**TYPE
B**



	Usable surface area	Constructed area
Hall	2.01 m ²	
Living-dining-kitchen	29.79 m ²	
Laundry	2.61 m ²	
Bedroom 1	12.12 m ²	
Bathroom 1	4.57 m ²	
Bedroom 2	10.83 m ²	
Bathroom 2	3.07 m ²	
Total Interior Living	65 m²	76.86 m²
Covered Terrace*	24 m²	27.23 m²
Uncovered Terrace*	5 m²	
Total Exterior Housing	29 m²	27.23 m²
Total House	94 m²	104.09 m²

* Variable surface depending on the floor and dwelling



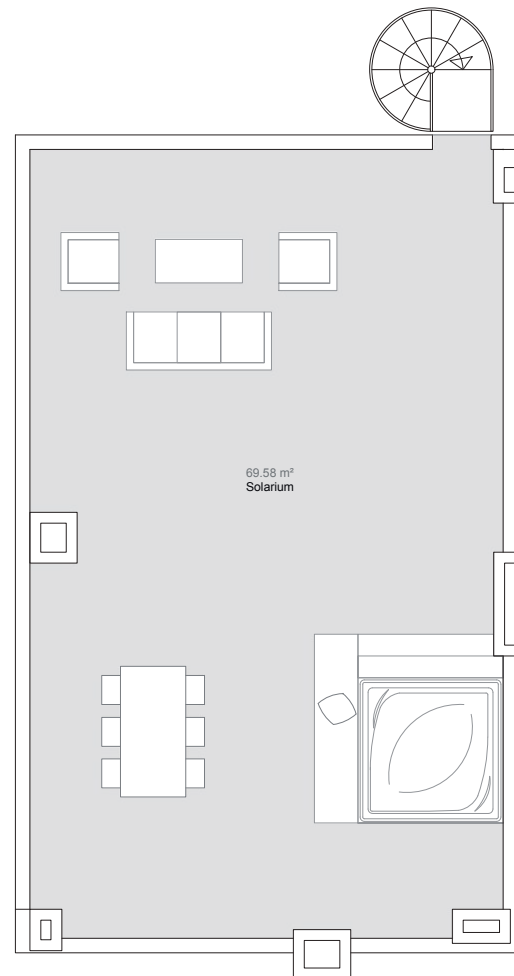
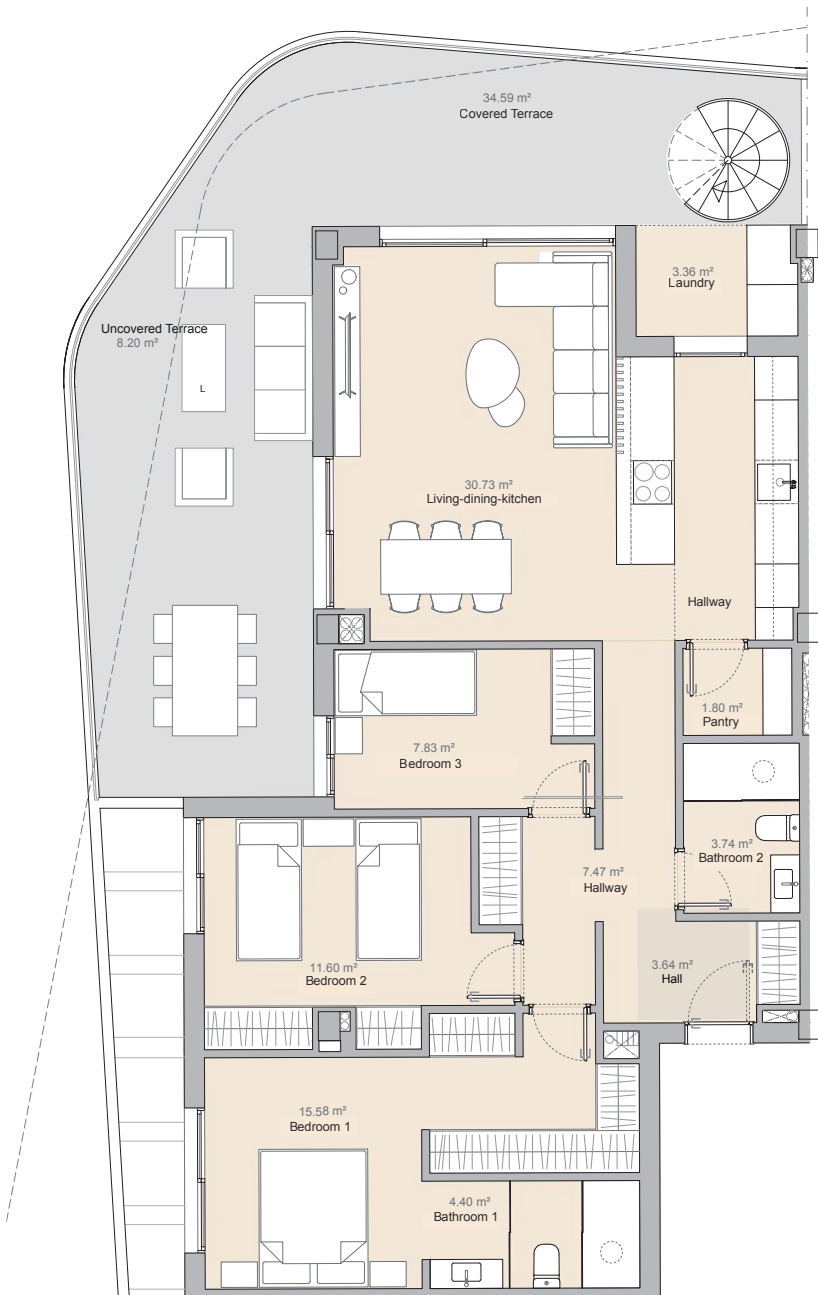
	Usable surface area	Constructed area
Hall	2.09 m ²	
Living-dining-kitchen	30.50 m ²	
Laundry	2.77 m ²	
Hallway	5.51 m ²	
Bedroom 1	14.70 m ²	
Bathroom 1	4.37 m ²	
Bedroom 2	9.89 m ²	
Bedroom 3	8.78 m ²	
Bathroom 2	3.80 m ²	
Total Interior Living	82.41 m²	95.80 m²
Covered Terrace*	25.52 m²	27.51 m²
Solarium	109.62 m²	
Total Exterior Housing	135.14 m²	27.51 m²
Total House	217.55 m²	123.31 m²

* Variable surface depending on the floor and dwelling



	Usable surface area	Constructed area
Hall	2.09 m²	
Living-dining-kitchen	30.50 m²	
Laundry	2.77 m²	
Hallway	5.51 m²	
Bedroom 1	14.70 m²	
Bathroom 1	4.37 m²	
Bedroom 2	9.89 m²	
Bedroom 3	8.78 m²	
Bathroom 2	3.80 m²	
Total Interior Living	82.41 m²	95.80 m²
Covered Terrace*	24.72 m²	26.63 m²
Total Exterior Housing	24.72 m²	26.63 m²
Total House	107.13 m²	122.43 m²

* Variable surface depending on the floor and dwelling



	Usable surface area	Constructed area
Hall	3.64 m ²	
Hallway	7.47 m ²	
Living-dining-kitchen	30.73 m ²	
Pantry	1.80 m ²	
Laundry	3.36 m ²	
Bedroom 1	15.58 m ²	
Bathroom 1	4.40 m ²	
Bedroom 2	11.60 m ²	
Bedroom 3	7.83 m ²	
Bathroom 2	3.74 m ²	

Total Interior Living	90.15 m ²	104.29 m ²
------------------------------	----------------------	-----------------------

Covered Terrace*	34.59 m ²	45.82 m ²
-------------------------	----------------------	----------------------

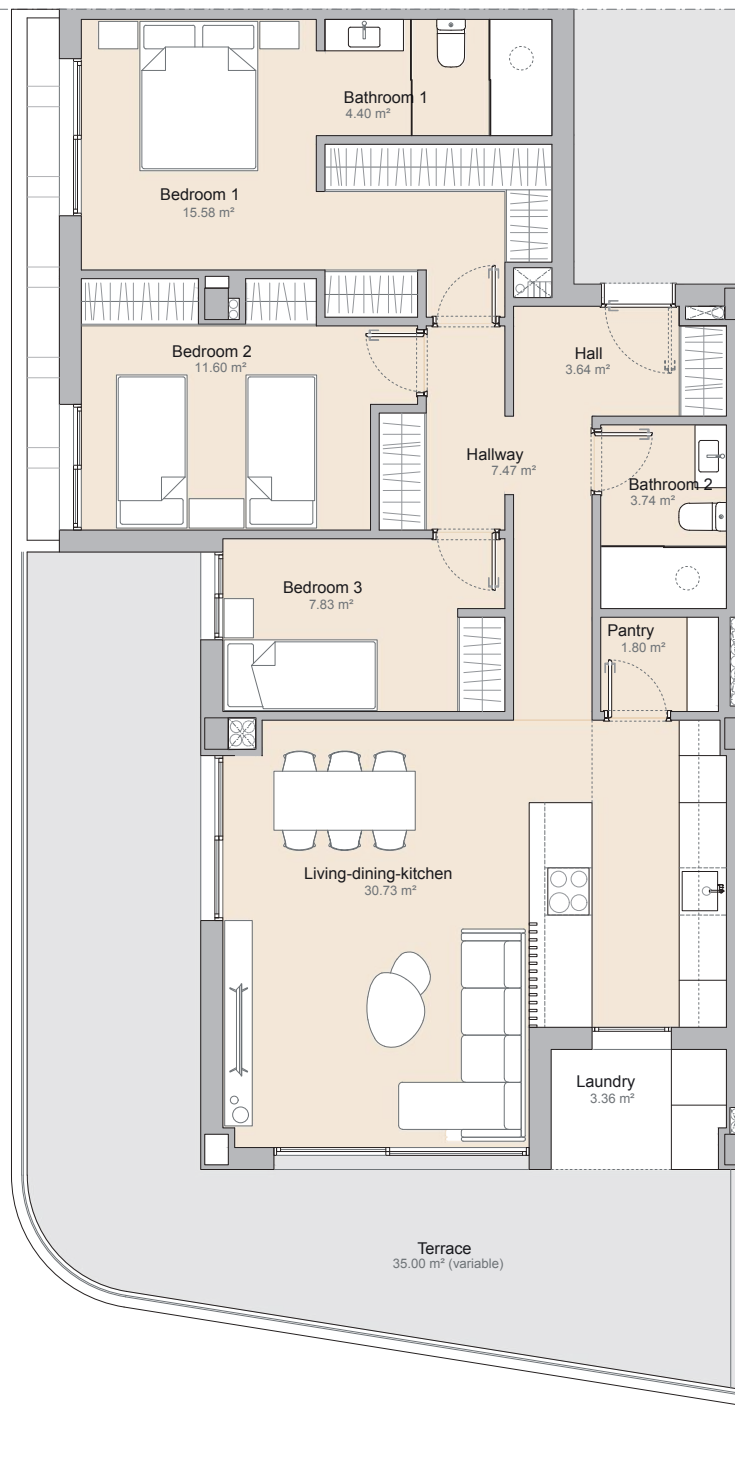
Uncovered Terrace*	8.20 m ²	
---------------------------	---------------------	--

Solarium	69.58 m ²	
-----------------	----------------------	--

Total Exterior Housing	112.37 m ²	45.82 m ²
-------------------------------	-----------------------	----------------------

Total House	202.52 m ²	150.11 m ²
--------------------	-----------------------	-----------------------

* Variable surface depending on the floor and dwelling



	Usable surface area	Constructed area
Hall	3.64 m ²	
Hallway	7.47 m ²	
Living-dining-kitchen	30.73 m ²	
Pantry	1.80 m ²	
Laundry	3.36 m ²	
Bedroom 1	15.58 m ²	
Bathroom 1	4.40 m ²	
Bedroom 2	11.60 m ²	
Bedroom 3	7.83 m ²	
Bathroom 2	3.74 m ²	
Total Interior Living	90.15 m²	104.29 m²
Covered Terrace*	33.03 m ²	35.86 m ²
Uncovered Terrace*	3.27 m ²	
Total Exterior Housing	36.30 m²	35.86 m²
Total House	126.45 m²	140.15 m²

* Variable surface depending on the floor and dwelling

