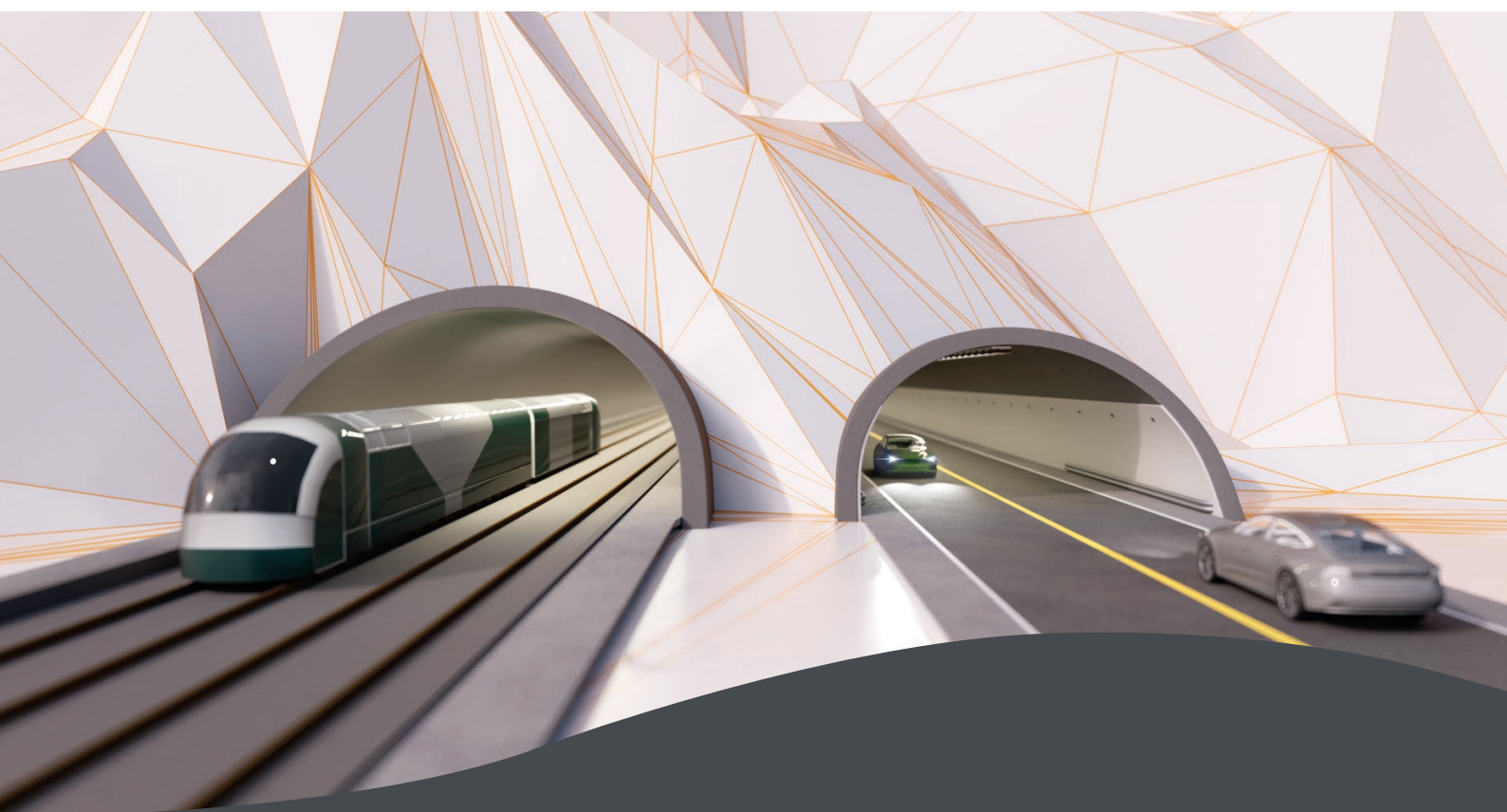


The Joint Project Arna–Stanghelle

Combining road and railway safety for the biggest tunnel project in Norway

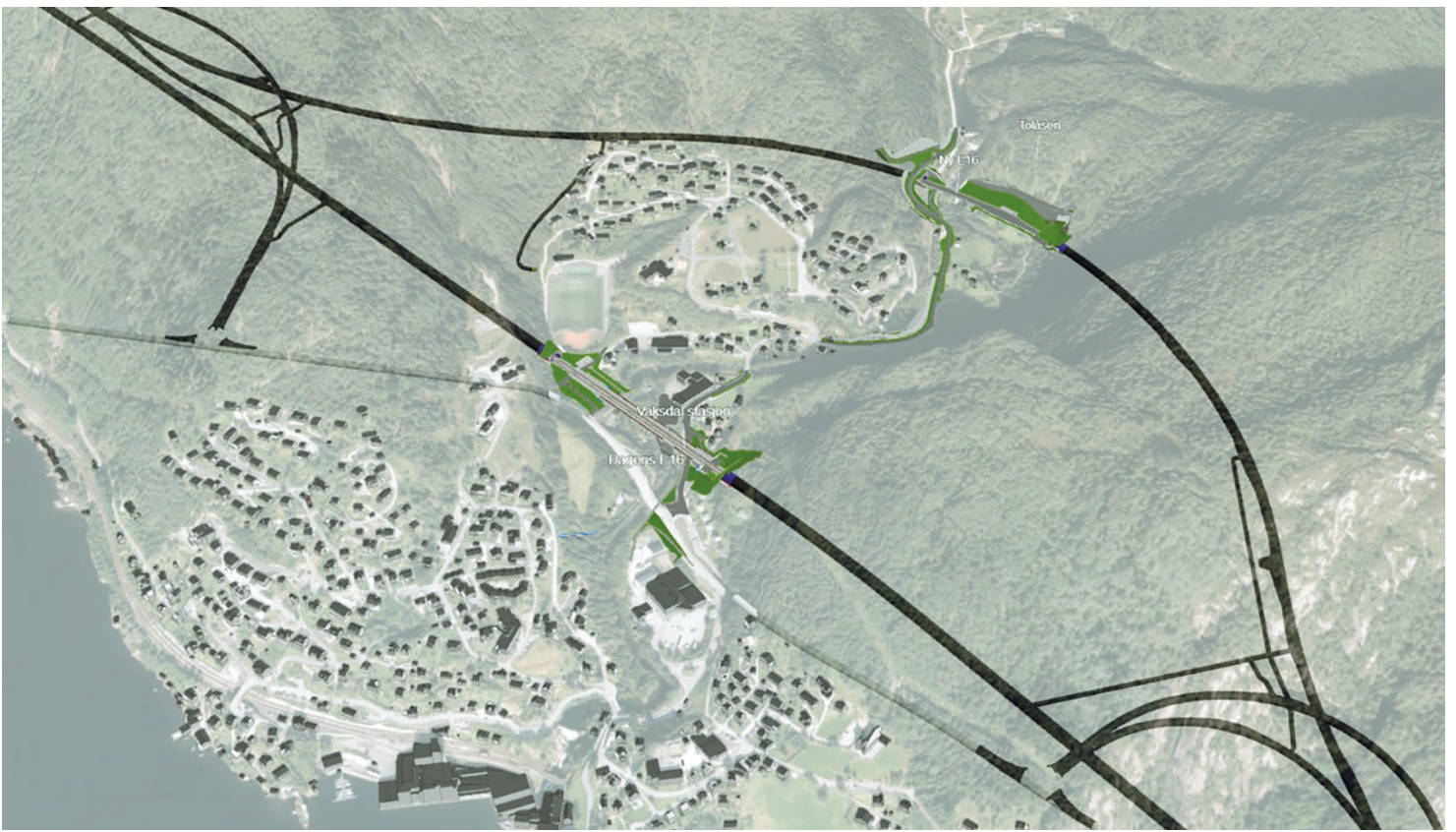


DESCRIPTION

A joint project between Norwegian Public Roads Administration and Bane NOR. A new common road and railway between Arna in Bergen municipality and Stanghelle/Helle in Vaksdal municipality will be built as one tunnel system with cross-passages for evacuation, between road and rail, and with combined technical rooms.

The Project is part of the main transport corridor between Oslo and Bergen, and will be the largest tunnel project in Norway. The aim of the project is to build a safer and more reliable road and railway.

The Project is working for construction start in 2024 with a construction time of 10 years, and a reduction of greenhouse gas emissions from the construction phase in line with The Paris Agreement



SCOPE

63 KM MAIN TUNNEL TUBES:

- 26 km railway tubes (93m²)
- 19 km road tubes (T10,5)
- 18 km road tubes (2xT9,5)

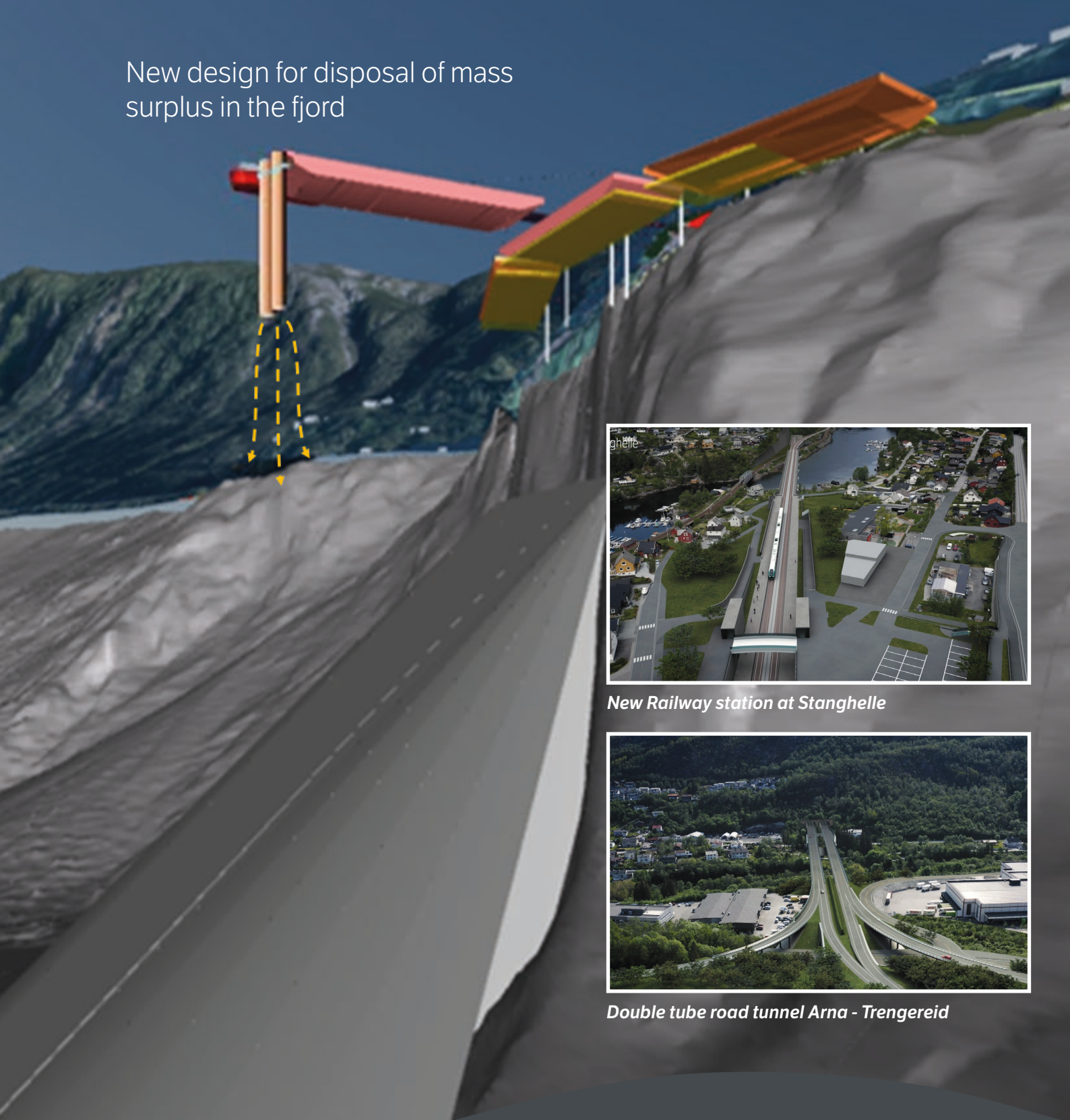
16 KM FURTHER TUNNELS:

- Six km junction ramp tubes (T7,5)
- Seven km evacuation tunnels (T4/T5,5)
- Three km temporary crosscut tunnels (T10)

IN ADDITION:

- Three railway stations (2 completely new)
- Three large bridges/viaducts
- Three day zone road intersections

New design for disposal of mass surplus in the fjord



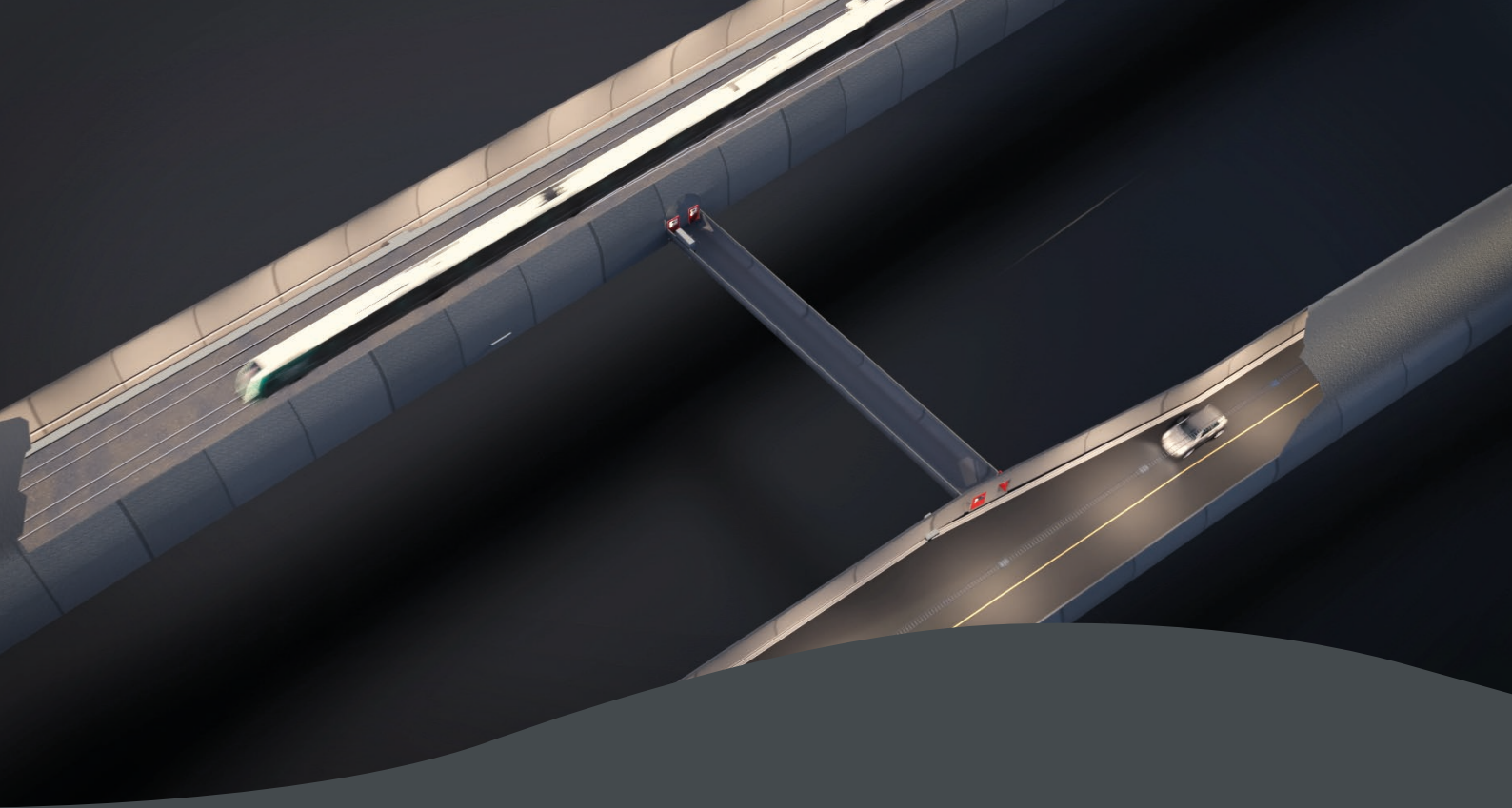
New Railway station at Stanghelle



Double tube road tunnel Arna - Trengereid

CHALLENGES

- Interfaces between road and railway
- Interfaces between contracts
- New evacuation system
- Mass surplus more than 10 mill cubic meters



COMMON CROSS-PASSAGES FOR EVACUATION

In the design and construction phase, different regulations and approval procedures must be coordinated.

In the operation and maintenance phase a common emergency preparedness, good routines and interface between the road control centre, rail traffic control centre as well as the operation and maintenance division must be organized and coordinated.



Overview map

MORE INFORMATION

To find more information about the project, included also a digital version of this flyer, scan the QR-Code or type the address below.

<https://www.vegvesen.no/vegprosjekter/europaveg/e16banearnastanghelle/in-english/>

