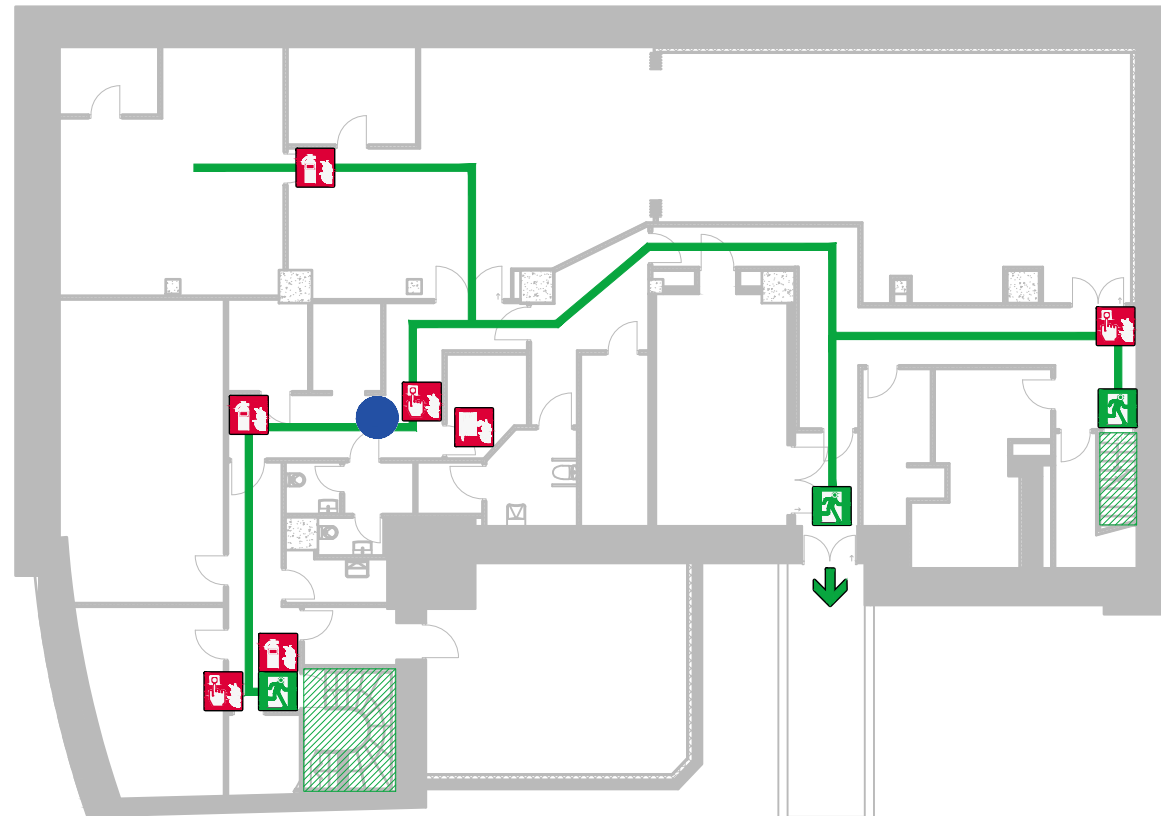


# RØMNINGSPLAN / EVACUATION PLAN



St. Jakobs plass 9  
Kjeller

## SYMBOLFORKLARING

	BRANNSLANGE FIRE HOSE
	HÅNDSLOKKER PORTABLE FIRE EXTINGUISHER
	MANUELL BRANNMELDER MANUAL CALL POINT
	RØMNINGSUTGANG ESCAPE EXIT
	SAMLINGSPLASS ASSEMBLY POINT
	UTGANG EXIT
	FLUKTVEI ESCAPE ROUTE
	HER STÅR DU YOU ARE HERE
	RØMNINGSVEI EXIT ACCESS

## BRANNINSTRUKS

Avhengig av forholdene:

**Redde:** Redd personer i umiddelbar fare.

**Varsle:** Bruk nærmeste manuelle melder.  
Ring: **110**

**Slukke:** Bruk nærmeste slukkemateriell.

**Rømme:** Bring deg selv i sikkerhet.

## FIRE INSTRUCTION

Depend on the situation:

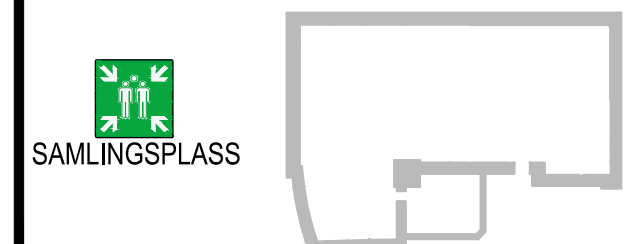
**Rescue:** Rescue persons in immediate danger.

**Alarm:** Activate the nearest manual call point.  
Call: **110**

**Extinguish:** Extinguish fire by using the nearest fire extinguish equipment.

**Evacuate:** Bring yourself to safety.

## LOKALISERINGSFIGUR

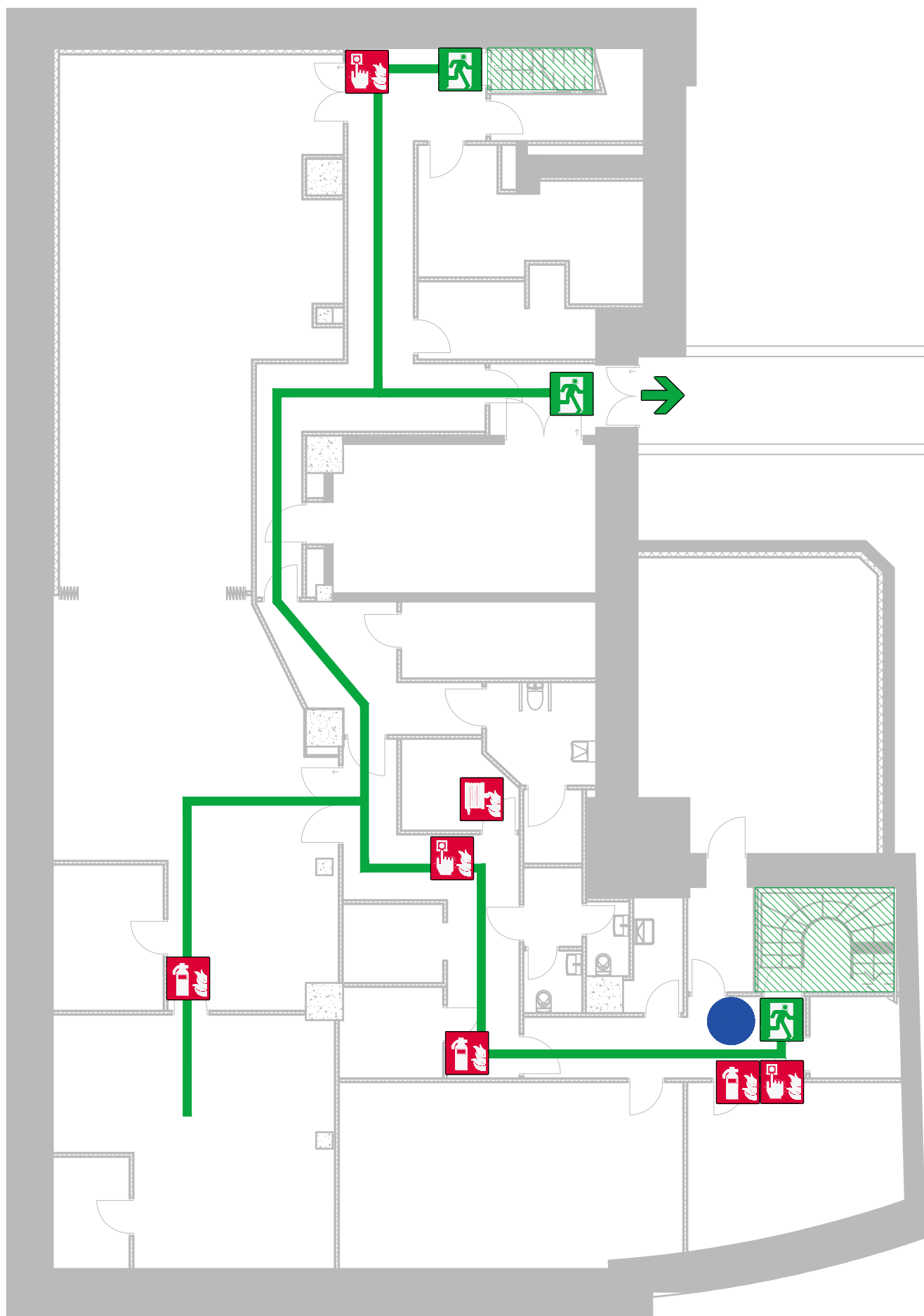


Laget dato: 22.06.2017  
Rev. dato: 22.06.2017  
Tegnet av: F.H.  
Prosjekt nr.: 615261

**Multiconsult**

# RØMNINGSPLAN / EVACUATION PLAN

St. Jakobs plass 9  
Kjeller



## SYMBOLFORKLARING

- BRANNSLANGE  
FIRE HOSE
- HÅNDSLOKKER  
PORTABLE FIRE EXTINGUISHER
- MANUELL BRANNMELDER  
MANUAL CALL POINT
- RØMNINGSGANG  
ESCAPE EXIT
- SAMLINGSPLASS  
ASSEMBLY POINT
- UTGANG  
EXIT
- FLUKTVEI  
ESCAPE ROUTE
- HER STÅR DU  
YOU ARE HERE
- RØMNINGSGANG  
EXIT ACCESS

## BRANNINSTRUKS

Avhengig av forholdene:

**Redde:** Redd personer i umiddelbar fare.

**Varsle:** Bruk nærmeste manuelle melder.  
Ring: **110**

**Slukke:** Bruk nærmeste slukkemateriell.

**Rømme:** Bring deg selv i sikkerhet.



## LOKALISERINGSFIGUR



SAMLINGSPLASS




Laget dato: 22.06.2017  
Rev. dato: 22.06.2017  
Tegnet av: F.H.  
Prosjekt nr.: 615261

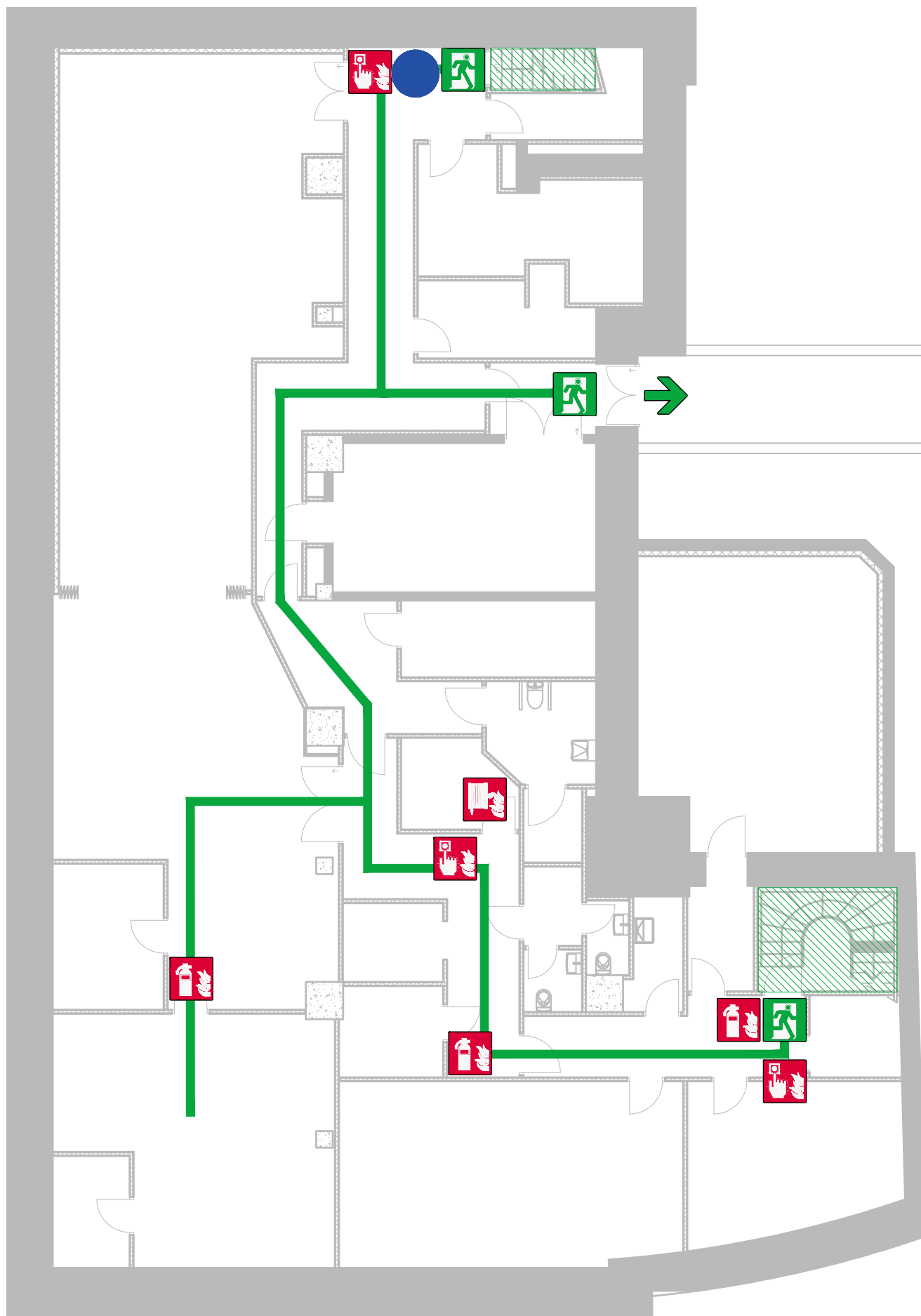
**Multiconsult**

# RØMNINGSPLAN / EVACUATION PLAN

St. Jakobs plass 9  
Kjeller

## SYMBOLFORKLARING

	BRANNSLANGE FIRE HOSE
	HÅNDSLOKKER PORTABLE FIRE EXTINGUISHER
	MANUELL BRANNMELDER MANUAL CALL POINT
	RØMNINGSGANG ESCAPE EXIT
	SAMLINGSPLASS ASSEMBLY POINT
	UTGANG EXIT
	FLUKTVEI ESCAPE ROUTE
	HER STÅR DU YOU ARE HERE
	RØMNINGSGANG EXIT ACCESS



## BRANNINSTRUKS

**Avhengig av forholdene:**

**Redde:** Redd personer i umiddelbar fare.

**Varsle:** Bruk nærmeste manuelle melder.  
Ring: **110**

**Slukke:** Bruk nærmeste slukkemateriell.

**Rømme:** Bring deg selv i sikkerhet.



## LOKALISERINGSFIGUR

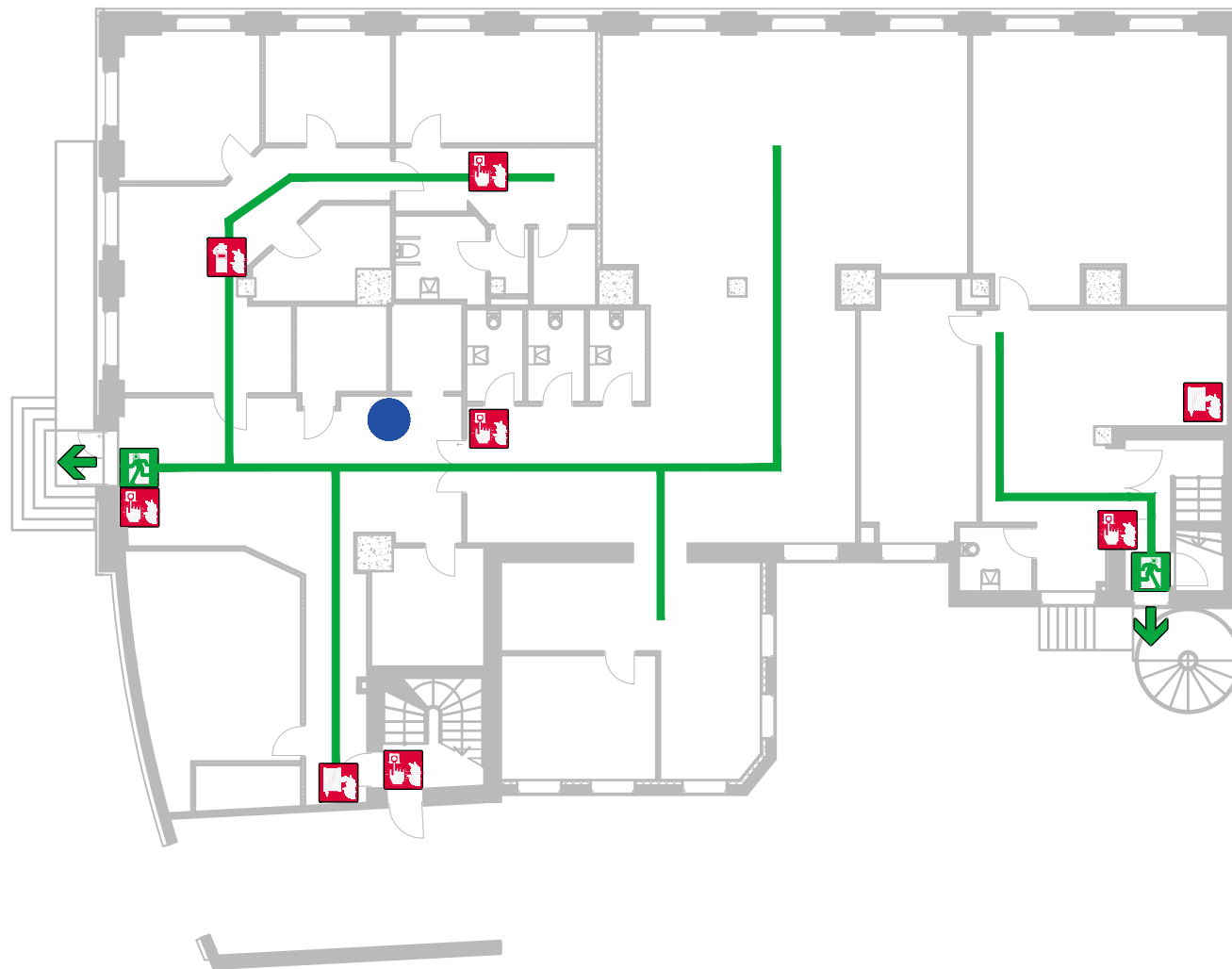


SAMLINGSPLASS

Laget dato: 22.06.2017  
Rev. dato: 22.06.2017  
Tegnet av: F.H.  
Prosjekt nr.: 615261

**Multiconsult**

# RØMNINGSPPLAN / EVACUATION PLAN



St. Jakobs plass 9  
1. Etasje

## SYMBOLFORKLARING

	BRANNSLANGE FIRE HOSE
	HÅNDSLOKKER PORTABLE FIRE EXTINGUISHER
	MANUELL BRANNMELDER MANUAL CALL POINT
	RØMNINGSGANG ESCAPE EXIT
	SAMLINGSPLASS ASSEMBLY POINT
	UTGANG EXIT
	FLUKTVEI ESCAPE ROUTE
	HER STÅR DU YOU ARE HERE
	RØMNINGSGANG EXIT ACCESS

## BRANNINSTRUKS

Avhengig av forholdene:

**Redde:** Redd personer i umiddelbar fare.

**Varsle:** Bruk nærmeste manuelle melder.  
Ring: **110**

**Slukke:** Bruk nærmeste slukkemateriell.

**Rømme:** Bring deg selv i sikkerhet.

## FIRE INSTRUCTION

Depend on the situation:

**Rescue:** Rescue persons in immediate danger.

**Alarm:** Activate the nearest manual call point.  
Call: **110**

**Extinguish:** Extinguish fire by using the nearest fire extinguish equipment.

**Evacuate:** Bring yourself to safety.

## LOKALISERINGSFIGUR



SAMLINGSPLASS


Laget dato: 22.06.2017  
Rev. dato: 22.06.2017  
Tegnet av: F.H.  
Prosjekt nr.: 615261

**Multiconsult**

# RØMNINGSPLAN / EVACUATION PLAN

St. Jakobs plass 9  
1. Etasje

## SYMBOLFORKLARING

	BRANNSLANGE FIRE HOSE
	HÅNDSLOKKER PORTABLE FIRE EXTINGUISHER
	MANUELL BRANNMELDER MANUAL CALL POINT
	RØMNINGSGANG ESCAPE EXIT
	SAMLINGSPLASS ASSEMBLY POINT
	UTGANG EXIT
	FLUKTVEI ESCAPE ROUTE
	HER STÅR DU YOU ARE HERE
	RØMNINGSGANG EXIT ACCESS

## BRANNINSTRUKS

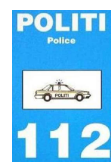
Avhengig av forholdene:

**Redde:** Redd personer i umiddelbar fare.

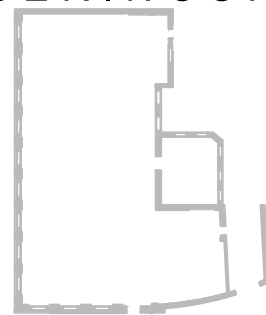
**Varsle:** Bruk nærmeste manuelle melder.  
Ring: **110**

**Slukke:** Bruk nærmeste slukkemateriell.

**Rømme:** Bring deg selv i sikkerhet.



## LOKALISERINGSFIGUR



SAMLINGSPLASS


Laget dato: 22.06.2017  
Rev. dato: 22.06.2017  
Tegnet av: F.H.  
Prosjekt nr.: 615261

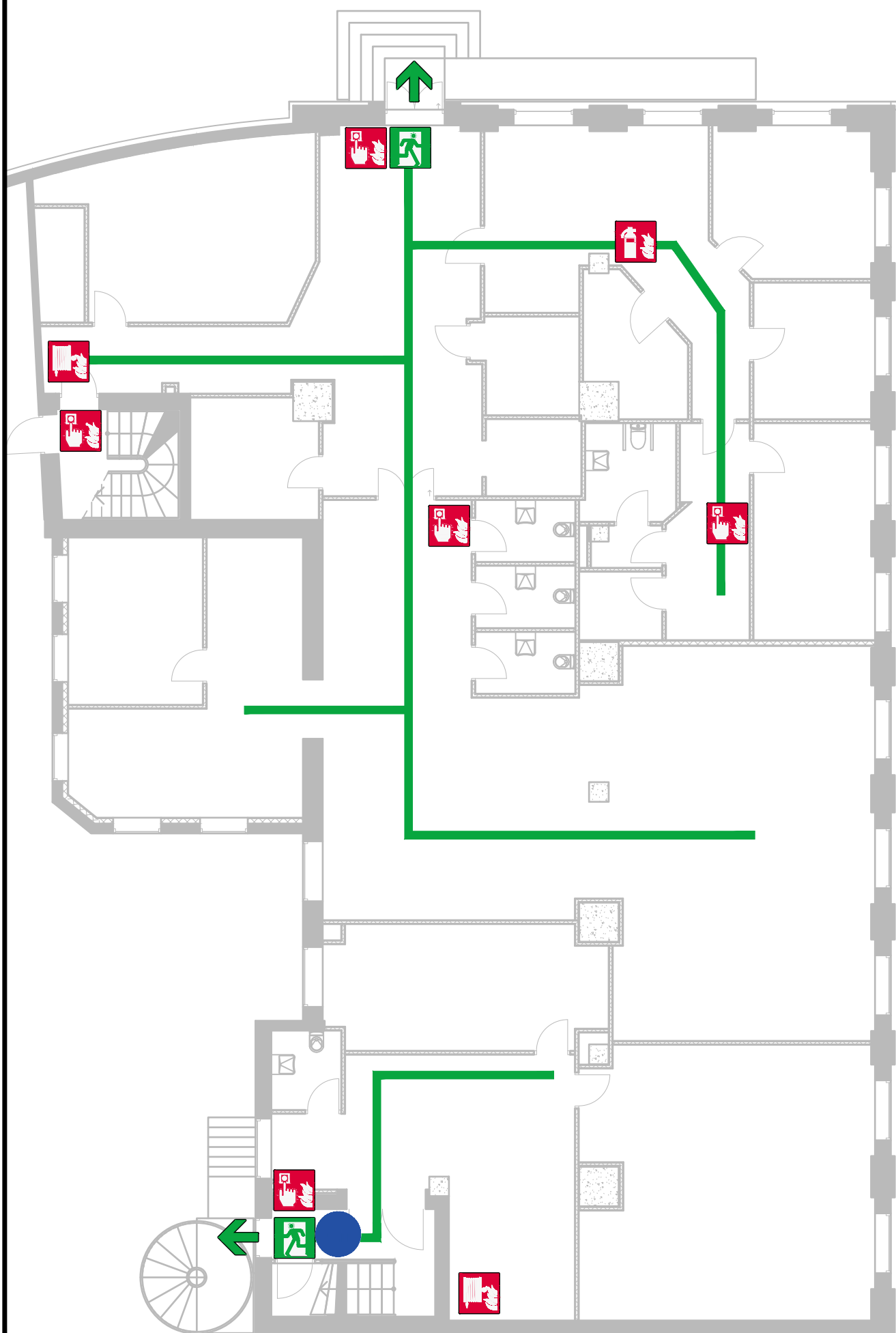
**Multiconsult**

# RØMNINGSPLAN / EVACUATION PLAN

St. Jakobs plass 9  
1. Etasje

## SYMBOLFORKLARING

	BRANNSLANGE FIRE HOSE
	HÅNDSLOKKER PORTABLE FIRE EXTINGUISHER
	MANUELL BRANNMELDER MANUAL CALL POINT
	RØMNINGSGANG ESCAPE EXIT
	SAMLINGSPLASS ASSEMBLY POINT
	UTGANG EXIT
	FLUKTVEI ESCAPE ROUTE
	HER STÅR DU YOU ARE HERE
	RØMNINGSGANG EXIT ACCESS



## BRANNINSTRUKS

Avhengig av forholdene:

**Redde:** Redd personer i umiddelbar fare.

**Varsle:** Bruk nærmeste manuelle melder.  
Ring: **110**

**Slukke:** Bruk nærmeste slökkemateriell.

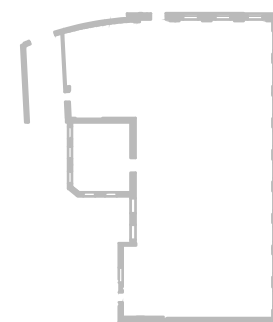
**Rømme:** Bring deg selv i sikkerhet.



## LOKALISERINGSFIGUR



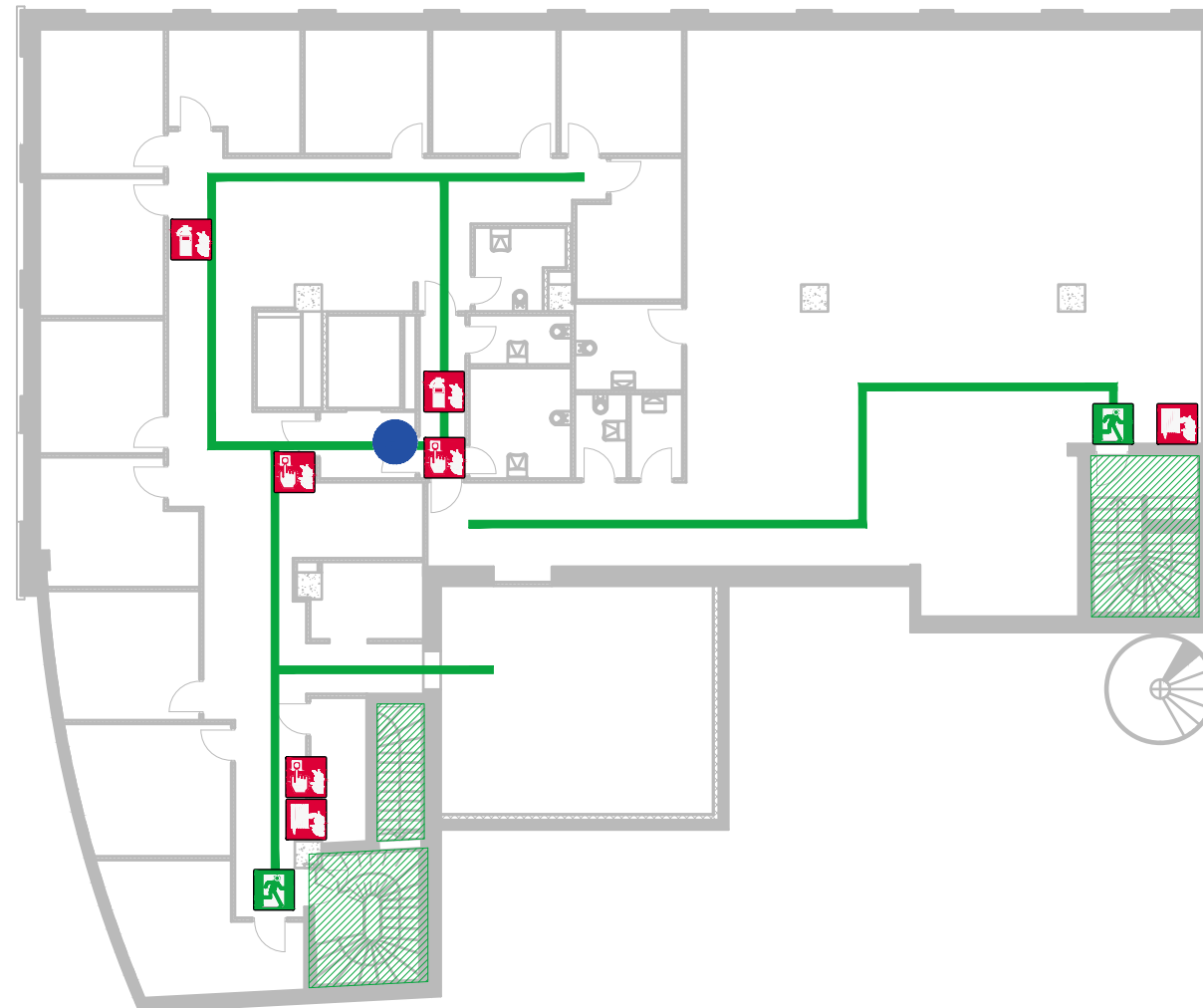
SAMLINGSPLASS



Laget dato: 22.06.2017  
Rev. dato: 22.06.2017  
Tegnet av: F.H.  
Prosjekt nr.: 615261

Multiconsult

# RØMNINGSPPLAN / EVACUATION PLAN



St. Jakobs plass 9  
2. Etasje

## SYMBOLFORKLARING

	BRANNSLANGE FIRE HOSE
	HÅNDSLOKKER PORTABLE FIRE EXTINGUISHER
	MANUELL BRANNMELDER MANUAL CALL POINT
	RØMNINGSGANG ESCAPE EXIT
	SAMLINGSPLASS ASSEMBLY POINT
	UTGANG EXIT
	FLUKTVEI ESCAPE ROUTE
	HER STÅR DU YOU ARE HERE
	RØMNINGSGANG EXIT ACCESS

## BRANNINSTRUKS

Avhengig av forholdene:

**Redde:** Redd personer i umiddelbar fare.

**Varsle:** Bruk nærmeste manuelle melder.  
Ring: **110**

**Slukke:** Bruk nærmeste slukkemateriell.

**Rømme:** Bring deg selv i sikkerhet.

## FIRE INSTRUCTION

Depend on the situation:

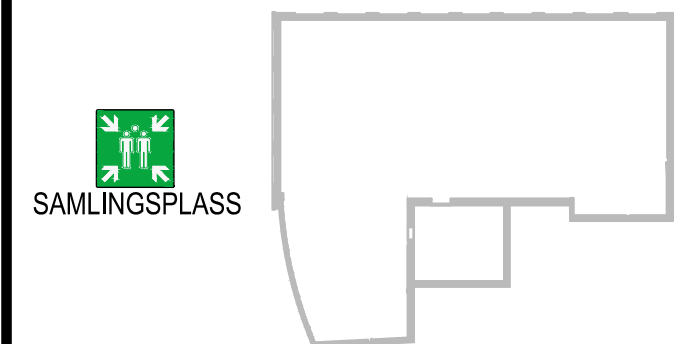
**Rescue:** Rescue persons in immediate danger.

**Alarm:** Activate the nearest manual call point.  
Call: **110**

**Extinguish:** Extinguish fire by using the nearest fire extinguish equipment.

**Evacuate:** Bring yourself to safety.

## LOKALISERINGSFIGUR



Laget dato: 22.06.2017  
Rev. dato: 22.06.2017  
Tegnet av: F.H.  
Prosjekt nr.: 615261

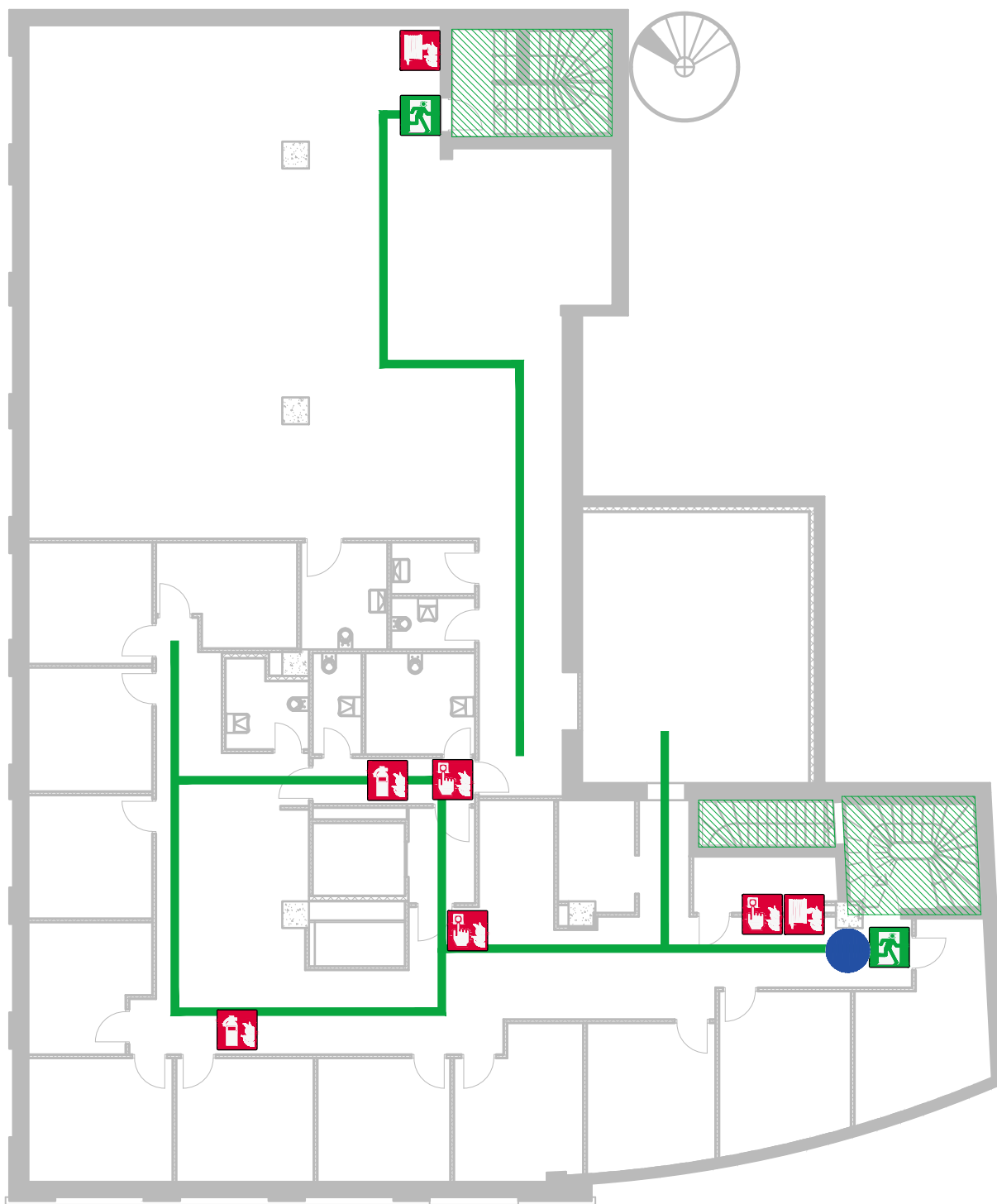
**Multiconsult**

# RØMNINGSPLAN / EVACUATION PLAN

St. Jakobs plass 9  
2. Etasje

## SYMBOLFORKLARING

	BRANNSLANGE FIRE HOSE
	HÅNDSLOKKER PORTABLE FIRE EXTINGUISHER
	MANUELL BRANNMELDER MANUAL CALL POINT
	RØMNINGSGANG ESCAPE EXIT
	SAMLINGSPLASS ASSEMBLY POINT
	UTGANG EXIT
	FLUKTVEI ESCAPE ROUTE
	HER STÅR DU YOU ARE HERE
	RØMNINGSGANG EXIT ACCESS



## BRANNINSTRUKS

Avhengig av forholdene:

**Redde:** Redd personer i umiddelbar fare.

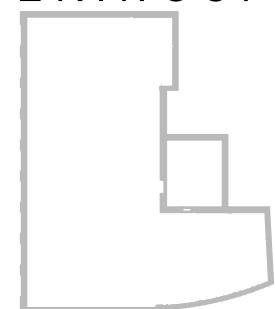
**Varsle:** Bruk nærmeste manuelle melder.  
Ring: **110**

**Slukke:** Bruk nærmeste slokkemateriell.

**Rømme:** Bring deg selv i sikkerhet.



## LOKALISERINGSFIGUR



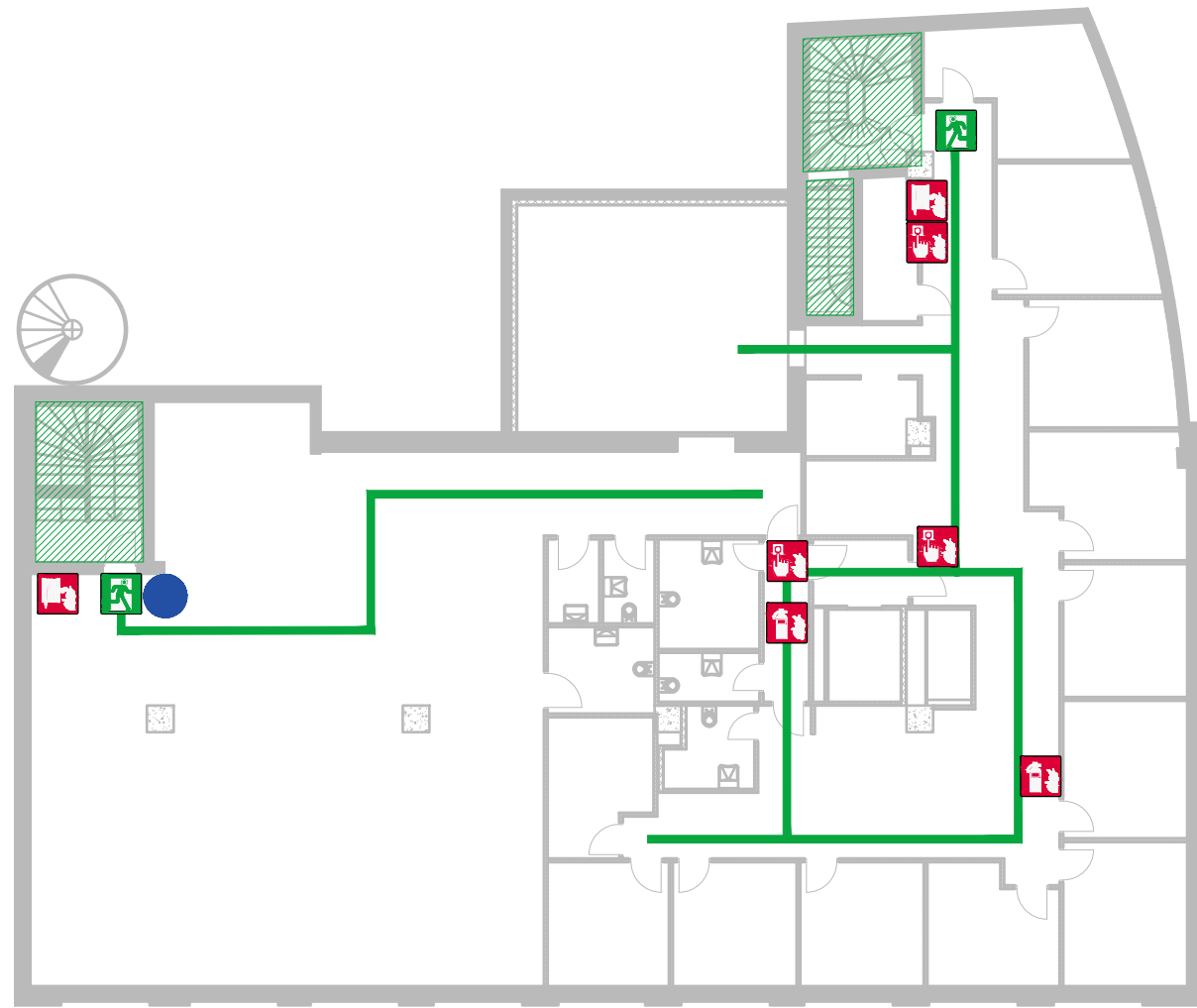
SAMLINGSPLASS

Laget dato: 22.06.2017  
Rev. dato: 22.06.2017  
Tegnet av: F.H.  
Prosjekt nr.: 615261

**Multiconsult**



# RØMNINGSPPLAN / EVACUATION PLAN



St. Jakobs plass 9  
2. Etasje

## SYMBOLFORKLARING

	BRANNSLANGE FIRE HOSE
	HÅNDSLOKKER PORTABLE FIRE EXTINGUISHER
	MANUELL BRANNMELDER MANUAL CALL POINT
	RØMNINGSGANG ESCAPE EXIT
	SAMLINGSPLASS ASSEMBLY POINT
	UTGANG EXIT
	FLUKTVEI ESCAPE ROUTE
	HER STÅR DU YOU ARE HERE
	RØMNINGSGANG EXIT ACCESS

## BRANNINSTRUKS

Avhengig av forholdene:

**Redde:** Redd personer i umiddelbar fare.

**Varsle:** Bruk nærmeste manuelle melder.  
Ring: **110**

**Slukke:** Bruk nærmeste slukkemateriell.

**Rømme:** Bring deg selv i sikkerhet.

## FIRE INSTRUCTION

Depend on the situation:

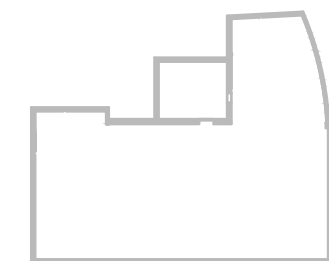
**Rescue:** Rescue persons in immediate danger.

**Alarm:** Activate the nearest manual call point.  
Call: **110**

**Extinguish:** Extinguish fire by using the nearest fire extinguish equipment.

**Evacuate:** Bring yourself to safety.

## LOKALISERINGSFIGUR

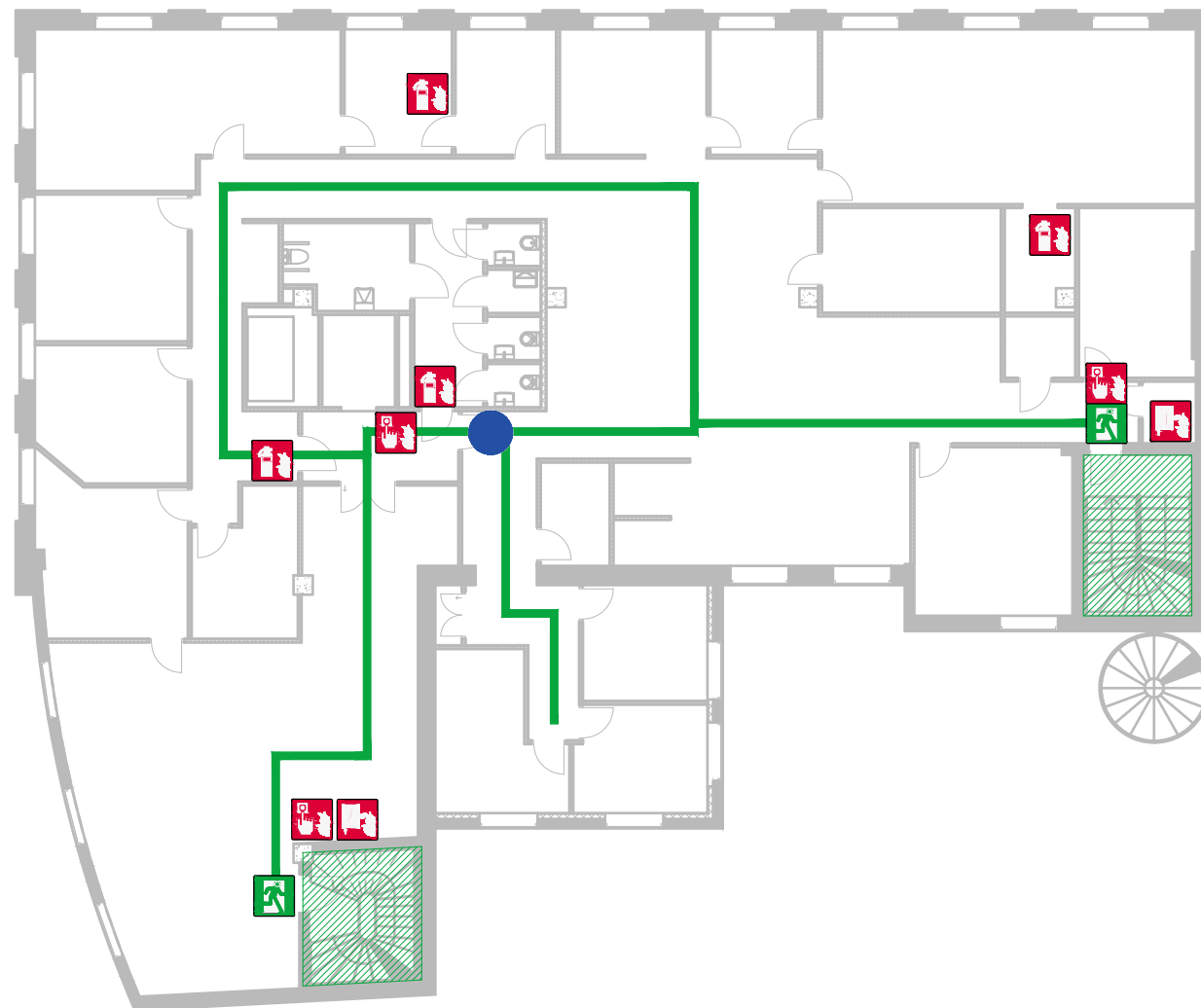


SAMLINGSPLASS

Laget dato: 22.06.2017  
Rev. dato: 22.06.2017  
Tegnet av: F.H.  
Prosjekt nr.: 615261

**Multiconsult**

# RØMNINGSPPLAN / EVACUATION PLAN



St. Jakobs plass 9  
3. Etasje

## SYMBOLFORKLARING

	BRANNSLANGE FIRE HOSE
	HÅNDSLOKKER PORTABLE FIRE EXTINGUISHER
	MANUELL BRANNMELDER MANUAL CALL POINT
	RØMNINGSGANG ESCAPE EXIT
	SAMLINGSPLASS ASSEMBLY POINT
	UTGANG EXIT
	FLUKTVEI ESCAPE ROUTE
	HER STÅR DU YOU ARE HERE
	RØMNINGSGANG EXIT ACCESS

## BRANNINSTRUKS

Avhengig av forholdene:

**Redde:** Redd personer i umiddelbar fare.

**Varsle:** Bruk nærmeste manuelle melder.  
Ring: **110**

**Slukke:** Bruk nærmeste slukkemateriell.

**Rømme:** Bring deg selv i sikkerhet.

## FIRE INSTRUCTION

Depend on the situation:

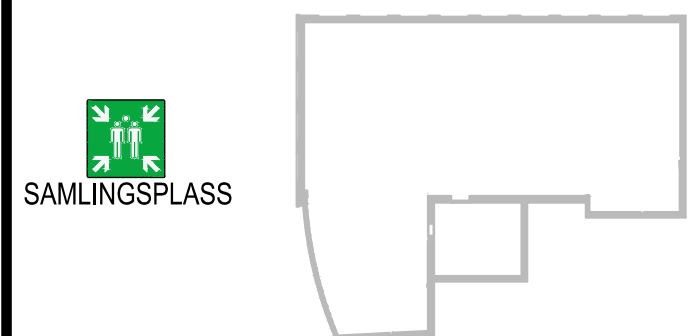
**Rescue:** Rescue persons in immediate danger.

**Alarm:** Activate the nearest manual call point.  
Call: **110**

**Extinguish:** Extinguish fire by using the nearest fire extinguish equipment.

**Evacuate:** Bring yourself to safety.

## LOKALISERINGSFIGUR




Laget dato: **22.06.2017**  
Rev. dato: **22.06.2017**  
Tegnet av: **F.H.**  
Prosjekt nr.: **615261**

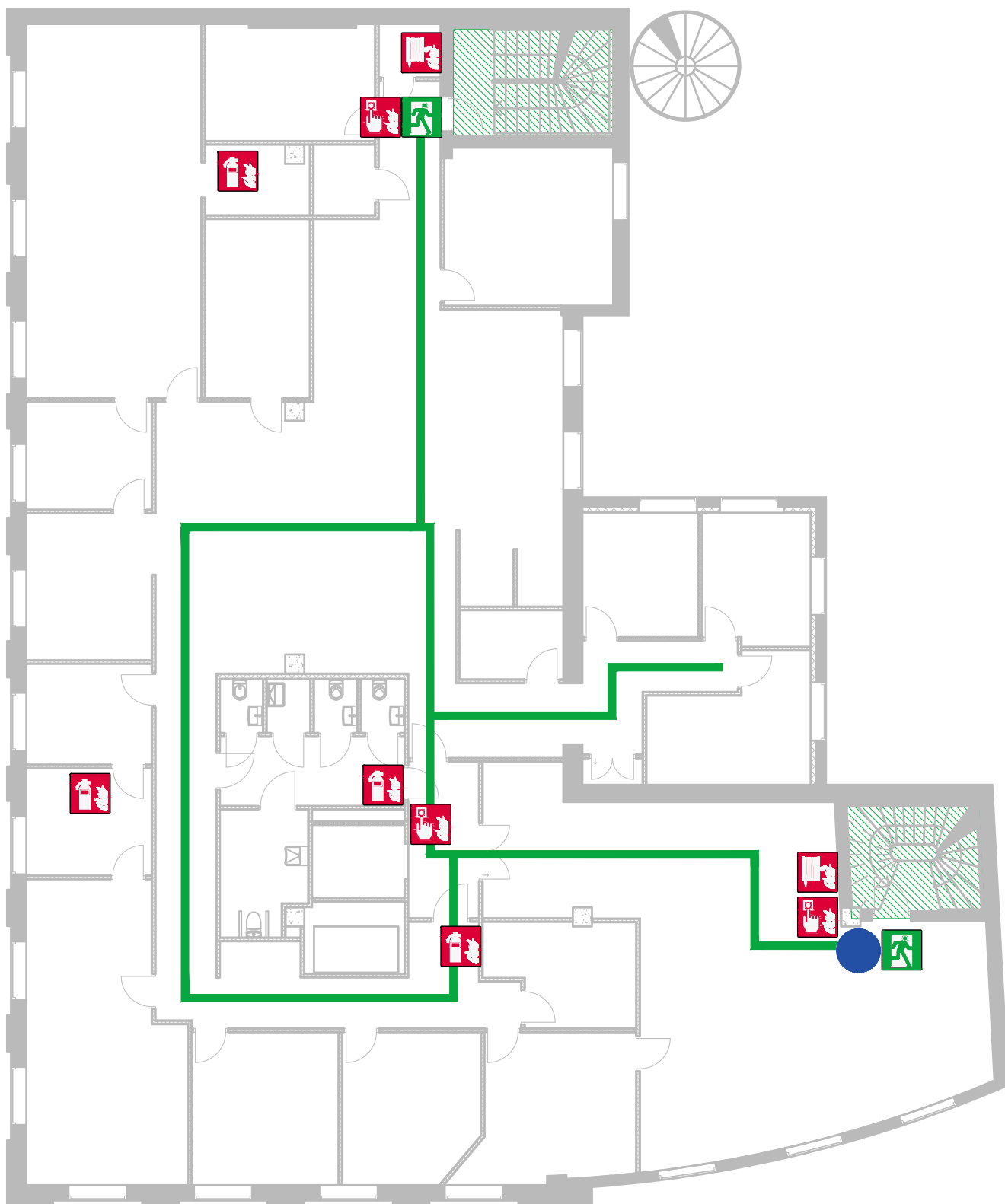
**Multiconsult**

# RØMNINGSPLAN / EVACUATION PLAN

St. Jakobs plass 9  
3. Etasje

## SYMBOLFORKLARING

	BRANNSLANGE FIRE HOSE
	HÅNDSLOKKER PORTABLE FIRE EXTINGUISHER
	MANUELL BRANNMELDER MANUAL CALL POINT
	RØMNINGSGANG ESCAPE EXIT
	SAMLINGSPLASS ASSEMBLY POINT
	UTGANG EXIT
	FLUKTVEI ESCAPE ROUTE
	HER STÅR DU YOU ARE HERE
	RØMNINGSGANG EXIT ACCESS



## BRANNINSTRUKS

Avhengig av forholdene:

**Redde:** Redd personer i umiddelbar fare.

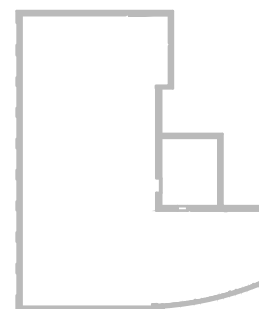
**Varsle:** Bruk nærmeste manuelle melder.  
Ring: **110**

**Slukke:** Bruk nærmeste slökkemateriell.

**Rømme:** Bring deg selv i sikkerhet.



## LOKALISERINGSFIGUR

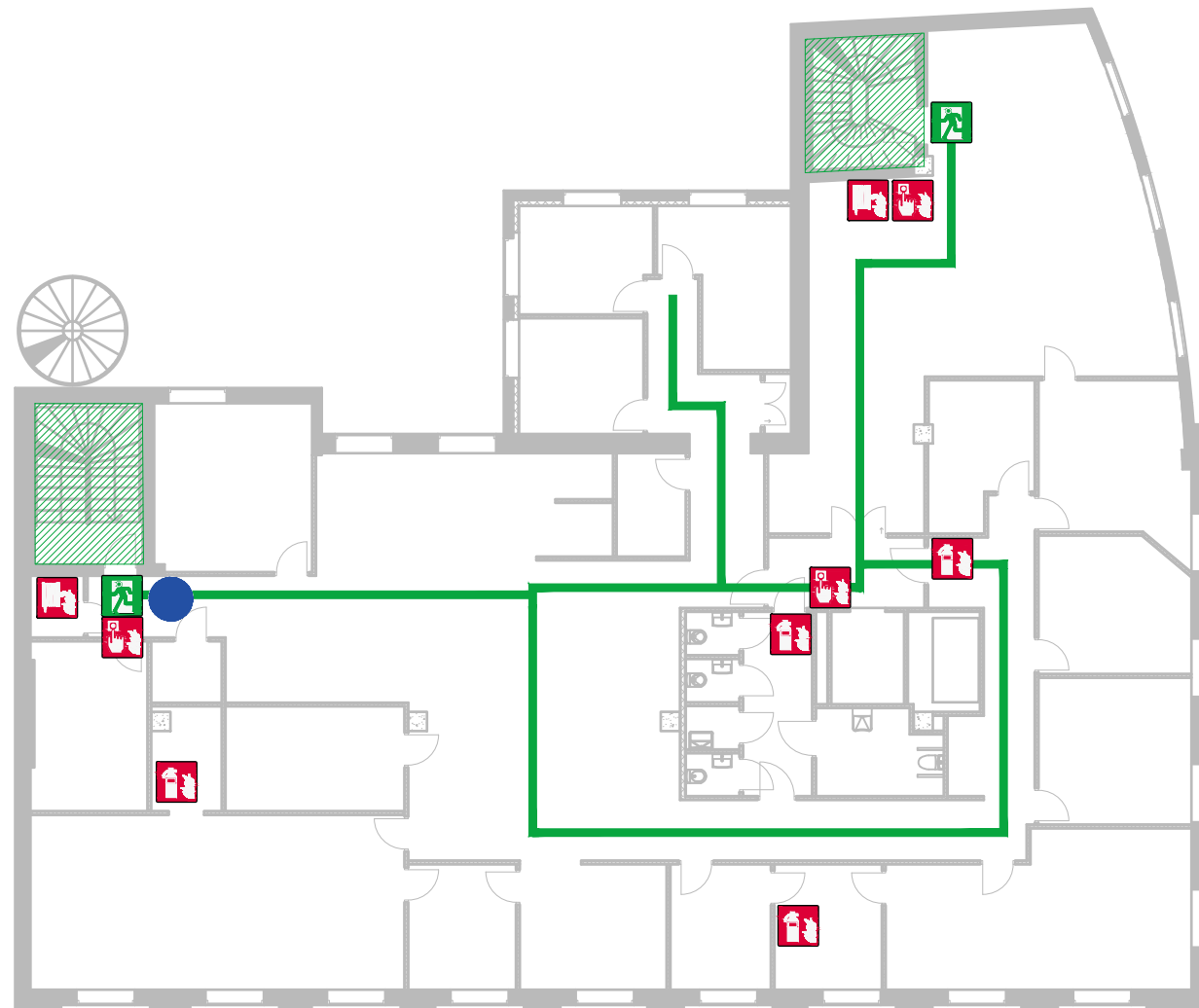


SAMLINGSPLASS

Laget dato: 22.06.2017  
Rev. dato: 22.06.2017  
Tegnet av: F.H.  
Prosjekt nr.: 615261

**Multiconsult**

# RØMNINGSPLAN / EVACUATION PLAN



St. Jakobs plass 9  
3. Etasje

## SYMBOLFORKLARING

	BRANNSLANGE FIRE HOSE
	HÅNDSLOKKER PORTABLE FIRE EXTINGUISHER
	MANUELL BRANNMELDER MANUAL CALL POINT
	RØMNINGSUTGANG ESCAPE EXIT
	SAMLINGSPLASS ASSEMBLY POINT
	UTGANG EXIT
	FLUKTVEI ESCAPE ROUTE
	HER STÅR DU YOU ARE HERE
	RØMNINGSVEI EXIT ACCESS

## BRANNINSTRUKS

Avhengig av forholdene:

**Redde:** Redd personer i umiddelbar fare.

**Varsle:** Bruk nærmeste manuelle melder.  
Ring: **110**

**Slukke:** Bruk nærmeste slukkemateriell.

**Rømme:** Bring deg selv i sikkerhet.

## FIRE INSTRUCTION

Depend on the situation:

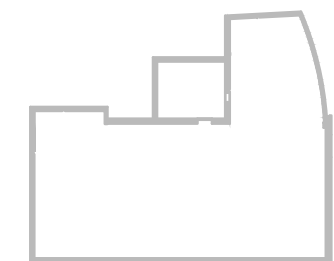
**Rescue:** Rescue persons in immediate danger.

**Alarm:** Activate the nearest manual call point.  
Call: **110**

**Extinguish:** Extinguish fire by using the nearest fire extinguish equipment.

**Evacuate:** Bring yourself to safety.

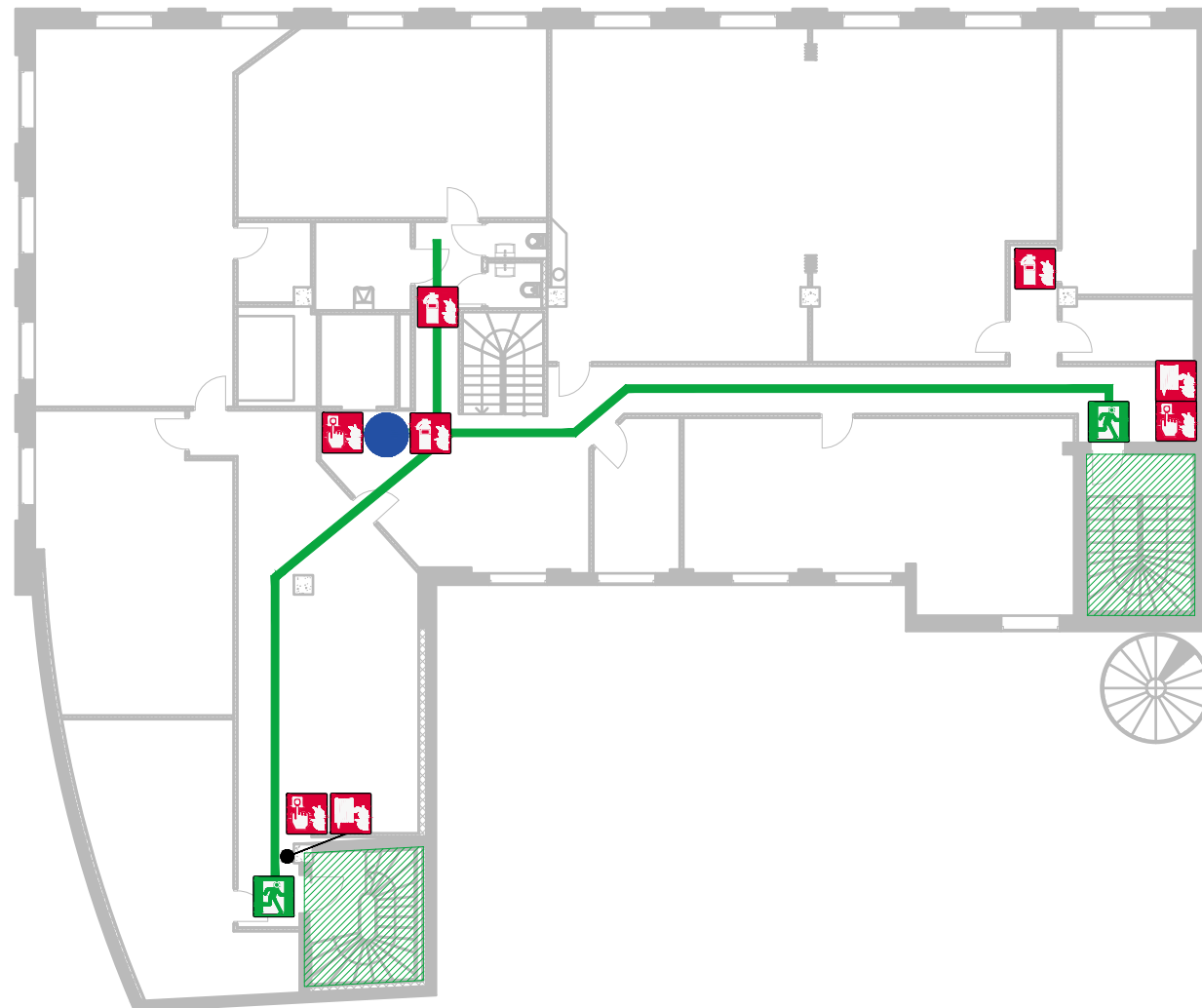
## LOKALISERINGSFIGUR



Laget dato: 22.06.2017  
Rev. dato: 22.06.2017  
Tegnet av: F.H.  
Prosjekt nr.: 615261

**Multiconsult**

# RØMNINGSPLAN / EVACUATION PLAN



St. Jakobs plass 9  
4 . E t a s j e

## SYMBOLFORKLARING

	BRANNSLANGE FIRE HOSE
	HÅNDSLOKKER PORTABLE FIRE EXTINGUISHER
	MANUELL BRANNMELDER MANUAL CALL POINT
	RØMNINGSGANG ESCAPE EXIT
	SAMLINGSPLASS ASSEMBLY POINT
	UTGANG EXIT
	FLUKTVEI ESCAPE ROUTE
	HER STÅR DU YOU ARE HERE
	RØMNINGSGANG EXIT ACCESS

## BRANNINSTRUKS

Avhengig av forholdene:

**Redde:** Redd personer i umiddelbar fare.

**Varsle:** Bruk nærmeste manuelle melder.  
Ring: **110**

**Slukke:** Bruk nærmeste slukkemateriell.

**Rømme:** Bring deg selv i sikkerhet.

## FIRE INSTRUCTION

Depend on the situation:

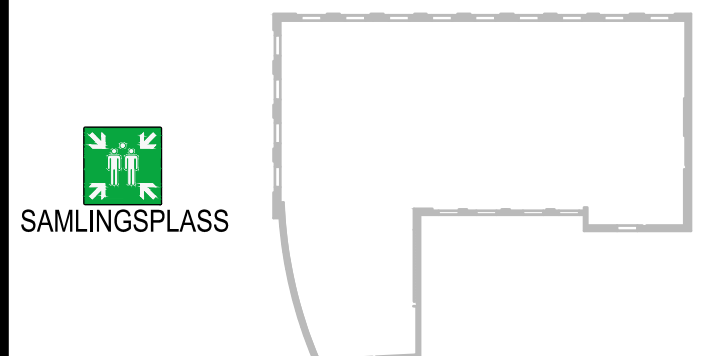
**Rescue:** Rescue persons in immediate danger.

**Alarm:** Activate the nearest manual call point.  
Call: **110**

**Extinguish:** Extinguish fire by using the nearest fire extinguish equipment.

**Evacuate:** Bring yourself to safety.

## LOKALISERINGSFIGUR



Laget dato: 22.06.2017  
Rev. dato: 22.06.2017  
Tegnet av: F.H.  
Prosjekt nr.: 615261

**Multiconsult**

# RØMNINGSPLAN / EVACUATION PLAN

St. Jakobs plass 9  
4. Etasje

## SYMBOLFORKLARING

	BRANNSLANGE FIRE HOSE
	HÅNDSLOKKER PORTABLE FIRE EXTINGUISHER
	MANUELL BRANNMELDER MANUAL CALL POINT
	RØMNINGSGANG ESCAPE EXIT
	SAMLINGSPLASS ASSEMBLY POINT
	UTGANG EXIT
	FLUKTVEI ESCAPE ROUTE
	HER STÅR DU YOU ARE HERE
	RØMNINGSGANG EXIT ACCESS

## BRANNINSTRUKS

Avhengig av forholdene:

**Redde:** Redd personer i umiddelbar fare.

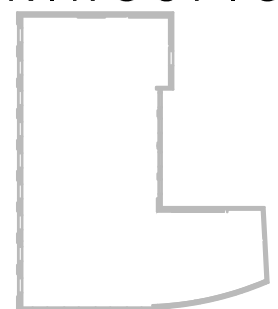
**Varsle:** Bruk nærmeste manuelle melder.  
Ring: **110**

**Slukke:** Bruk nærmeste slukkemateriell.

**Rømme:** Bring deg selv i sikkerhet.



## LOKALISERINGSFIGUR

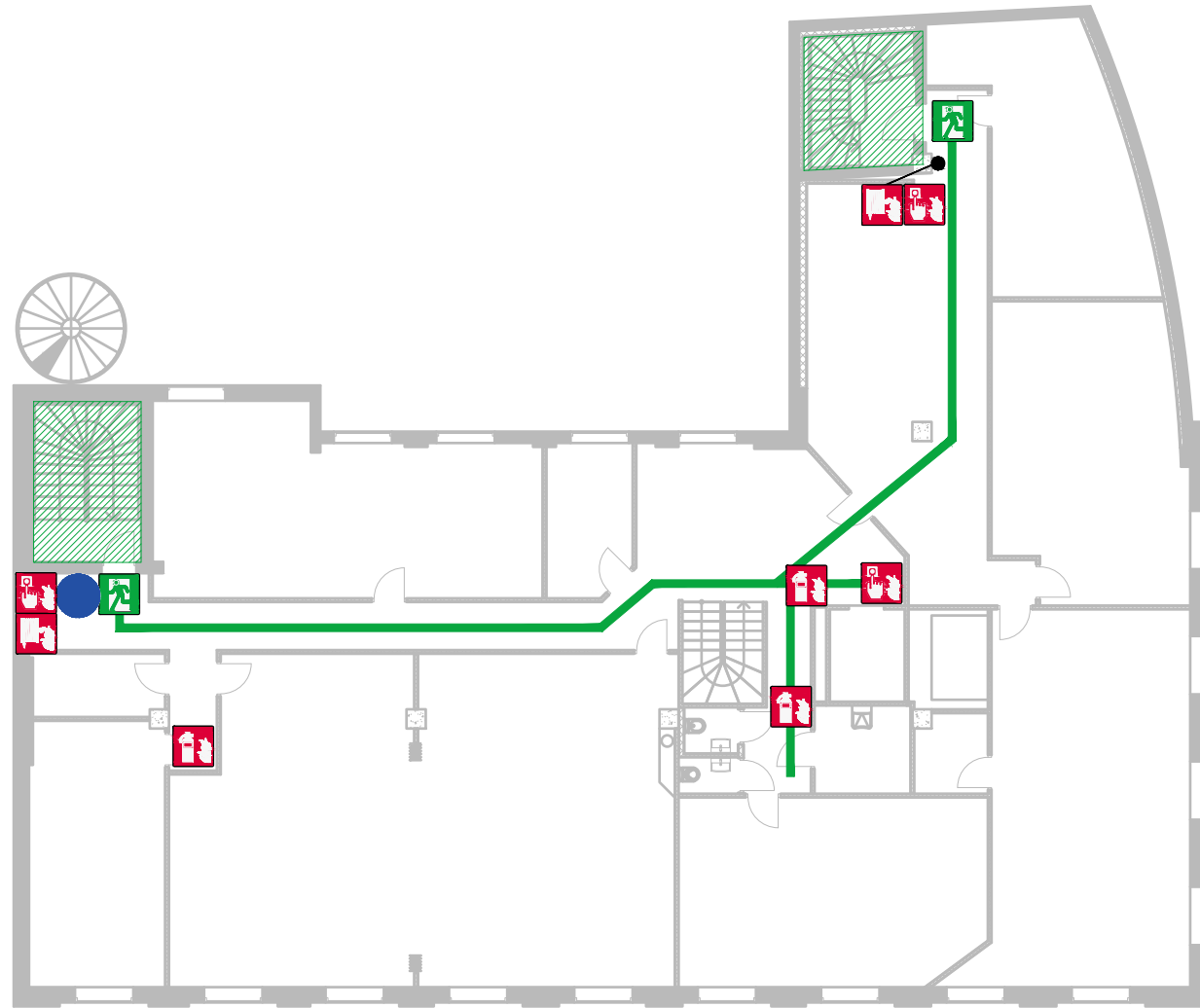


SAMLINGSPLASS

Laget dato: 22.06.2017  
Rev. dato: 22.06.2017  
Tegnet av: F.H.  
Prosjekt nr.: 615261

**Multiconsult**

# RØMNINGSPPLAN / EVACUATION PLAN



St. Jakobs plass 9  
4. Etasje

## SYMBOLFORKLARING

	BRANNSLANGE FIRE HOSE
	HÅNDSLOKKER PORTABLE FIRE EXTINGUISHER
	MANUELL BRANNMELDER MANUAL CALL POINT
	RØMNINGSGANG ESCAPE EXIT
	SAMLINGSPLASS ASSEMBLY POINT
	UTGANG EXIT
	FLUKTVEI ESCAPE ROUTE
	HER STÅR DU YOU ARE HERE
	RØMNINGSGANG EXIT ACCESS

## BRANNINSTRUKS

Avhengig av forholdene:

**Redde:** Redd personer i umiddelbar fare.

**Varsle:** Bruk nærmeste manuelle melder.  
Ring: **110**

**Slukke:** Bruk nærmeste slukkemateriell.

**Rømme:** Bring deg selv i sikkerhet.

## FIRE INSTRUCTION

Depend on the situation:

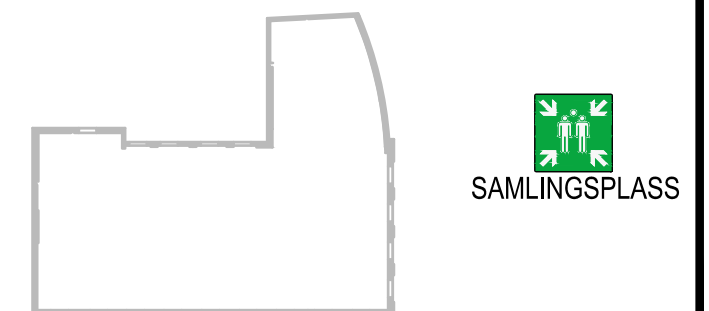
**Rescue:** Rescue persons in immediate danger.

**Alarm:** Activate the nearest manual call point.  
Call: **110**

**Extinguish:** Extinguish fire by using the nearest fire extinguish equipment.

**Evacuate:** Bring yourself to safety.

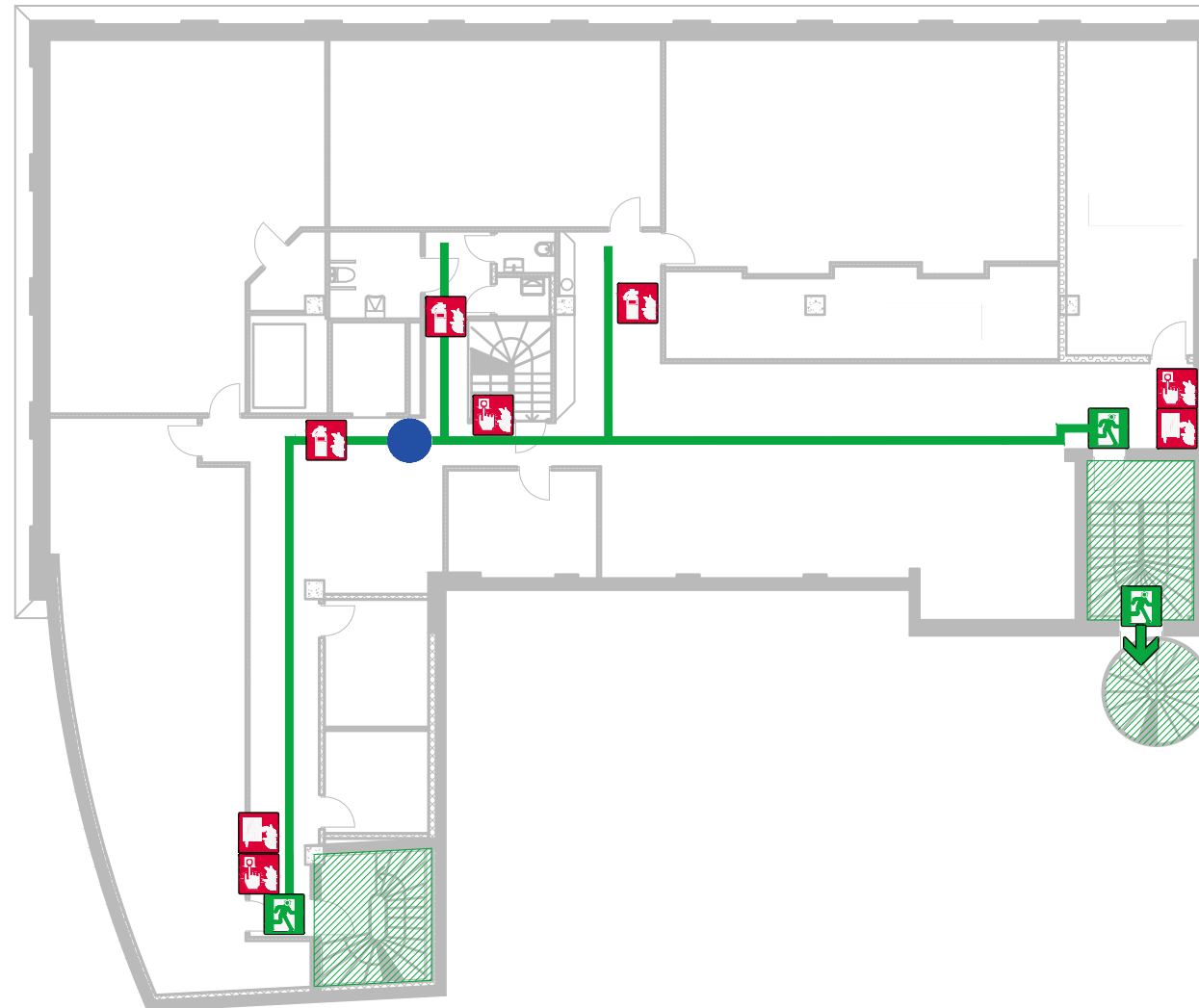
## LOKALISERINGSFIGUR



Laget dato: 22.06.2017  
Rev. dato: 22.06.2017  
Tegnet av: F.H.  
Prosjekt nr.: 615261

**Multiconsult**

# RØMNINGSPLAN / EVACUATION PLAN



St. Jakobs plass 9  
5. Etasje

## SYMBOLFORKLARING

	BRANNSLANGE FIRE HOSE
	HÅNDSLOKKER PORTABLE FIRE EXTINGUISHER
	MANUELL BRANNMELDER MANUAL CALL POINT
	RØMNINGSGANG ESCAPE EXIT
	SAMLINGSPLASS ASSEMBLY POINT
	UTGANG EXIT
	FLUKTVEI ESCAPE ROUTE
	HER STÅR DU YOU ARE HERE
	RØMNINGSGANG EXIT ACCESS

## BRANNINSTRUKS

Avhengig av forholdene:

**Redde:** Redd personer i umiddelbar fare.

**Varsle:** Bruk nærmeste manuelle melder.  
Ring: **110**

**Slukke:** Bruk nærmeste slukkemateriell.

**Rømme:** Bring deg selv i sikkerhet.

## FIRE INSTRUCTION

Depend on the situation:

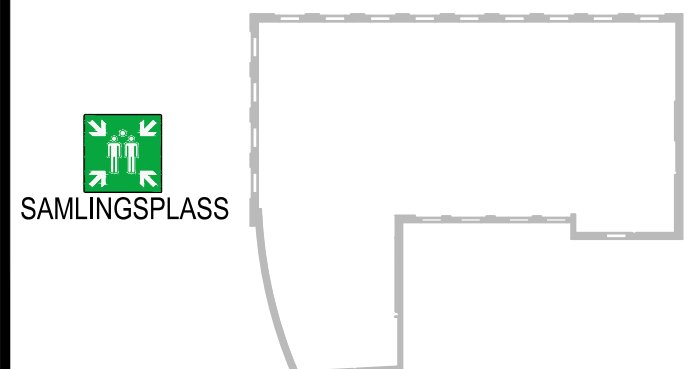
**Rescue:** Rescue persons in immediate danger.

**Alarm:** Activate the nearest manual call point.  
Call: **110**

**Extinguish:** Extinguish fire by using the nearest fire extinguish equipment.

**Evacuate:** Bring yourself to safety.

## LOKALISERINGSFIGUR



Laget dato: 22.06.2017  
Rev. dato: 22.06.2017  
Tegnet av: F.H.  
Prosjekt nr.: 615261



**Multiconsult**

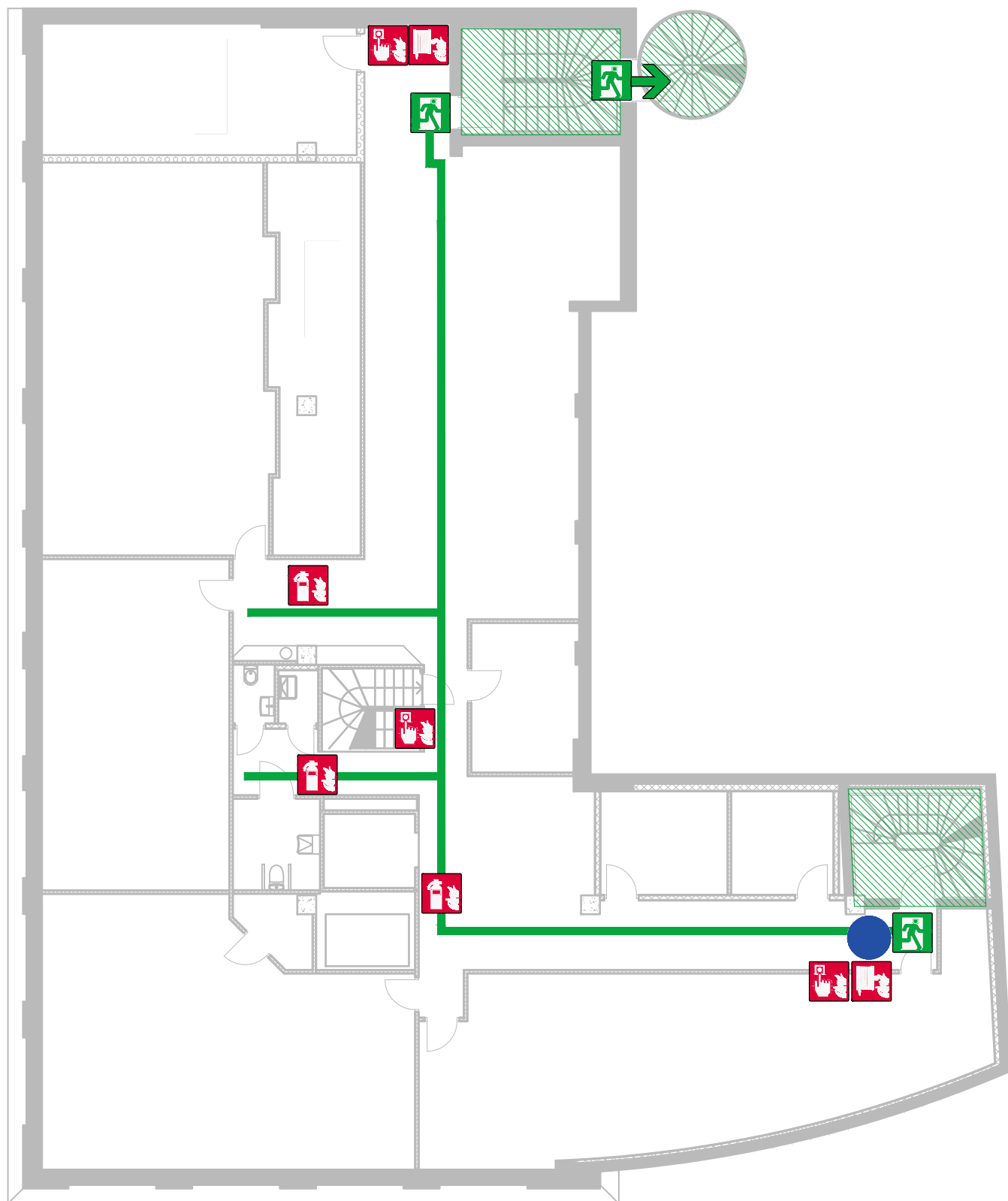


# RØMNINGSPLAN / EVACUATION PLAN

St. Jakobs plass 9  
5. Etasje

## SYMBOLFORKLARING

	BRANNSLANGE FIRE HOSE
	HÅNDSLOKKER PORTABLE FIRE EXTINGUISHER
	MANUELL BRANNMELDER MANUAL CALL POINT
	RØMNINGSGANG ESCAPE EXIT
	SAMLINGSPLASS ASSEMBLY POINT
	UTGANG EXIT
	FLUKTVEI ESCAPE ROUTE
	HER STÅR DU YOU ARE HERE
	RØMNINGSGANG EXIT ACCESS



## BRANNINSTRUKS

Avhengig av forholdene:

**Redde:** Redd personer i umiddelbar fare.

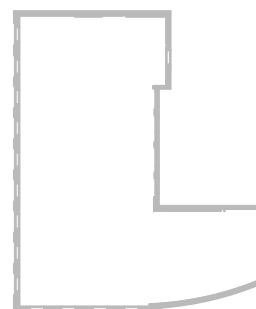
**Varsle:** Bruk nærmeste manuelle melder.  
Ring: **110**

**Slukke:** Bruk nærmeste slukkemateriell.

**Rømme:** Bring deg selv i sikkerhet.



## LOKALISERINGSFIGUR

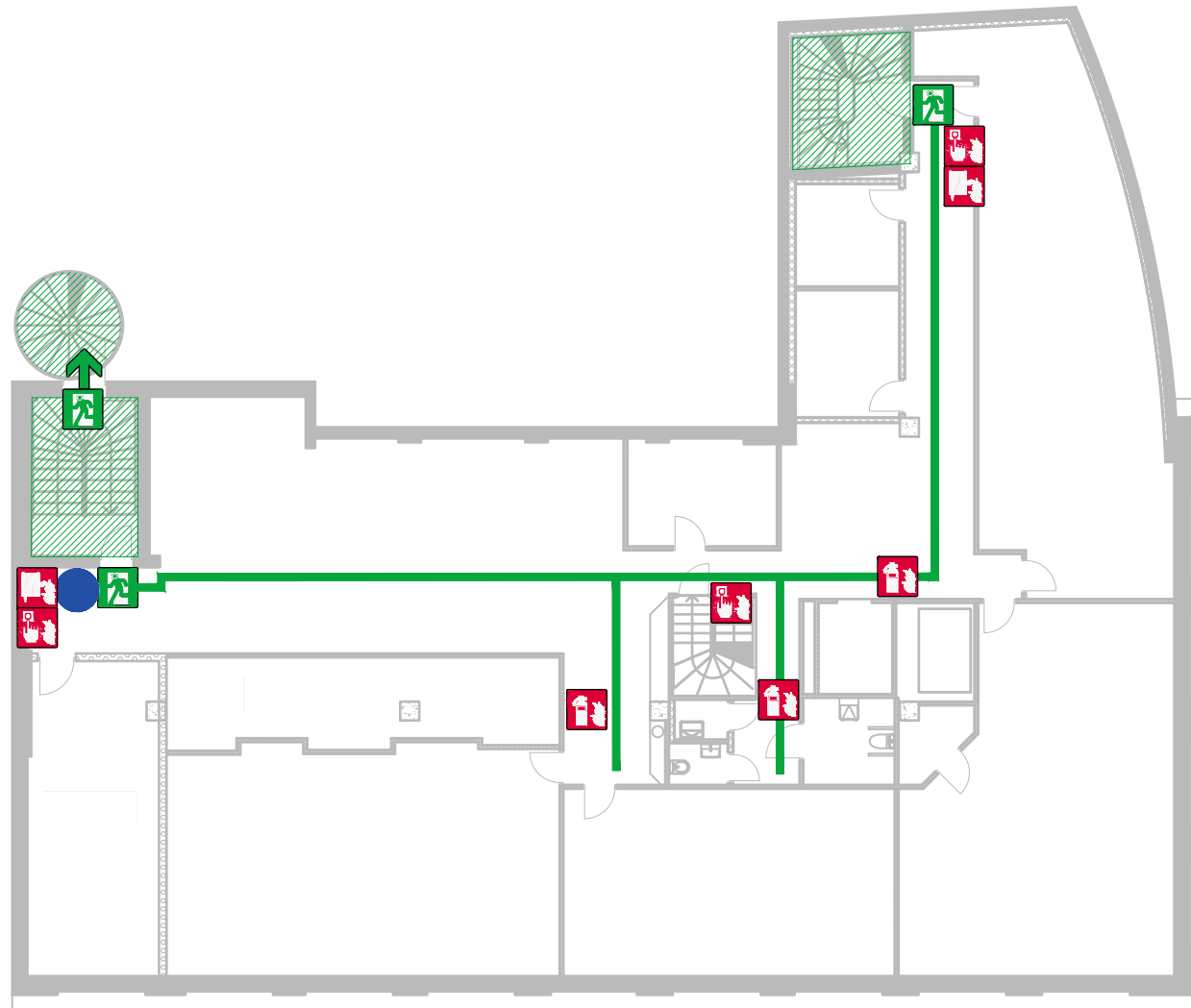


SAMLINGSPLASS

Laget dato: 22.06.2017  
Rev. dato: 22.06.2017  
Tegnet av: F.H.  
Prosjekt nr.: 615261

**Multiconsult**

# RØMNINGSPLAN / EVACUATION PLAN



St. Jakobs plass 9  
5. Etasje

## SYMBOLFORKLARING

	BRANNSLANGE FIRE HOSE
	HÅNDSLOKKER PORTABLE FIRE EXTINGUISHER
	MANUELL BRANNMELDER MANUAL CALL POINT
	RØMNINGSUTGANG ESCAPE EXIT
	SAMLINGSPLASS ASSEMBLY POINT
	UTGANG EXIT
	FLUKTVEI ESCAPE ROUTE
	HER STÅR DU YOU ARE HERE
	RØMNINGSVEI EXIT ACCESS

## BRANNINSTRUKS

Avhengig av forholdene:

**Redde:** Redd personer i umiddelbar fare.

**Varsle:** Bruk nærmeste manuelle melder.  
Ring: **110**

**Slukke:** Bruk nærmeste slukkemateriell.

**Rømme:** Bring deg selv i sikkerhet.

## FIRE INSTRUCTION

Depend on the situation:

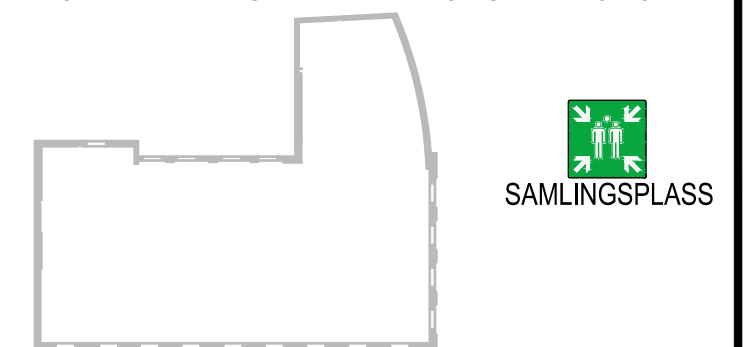
**Rescue:** Rescue persons in immediate danger.

**Alarm:** Activate the nearest manual call point.  
Call: **110**

**Extinguish:** Extinguish fire by using the nearest fire extinguish equipment.

**Evacuate:** Bring yourself to safety.

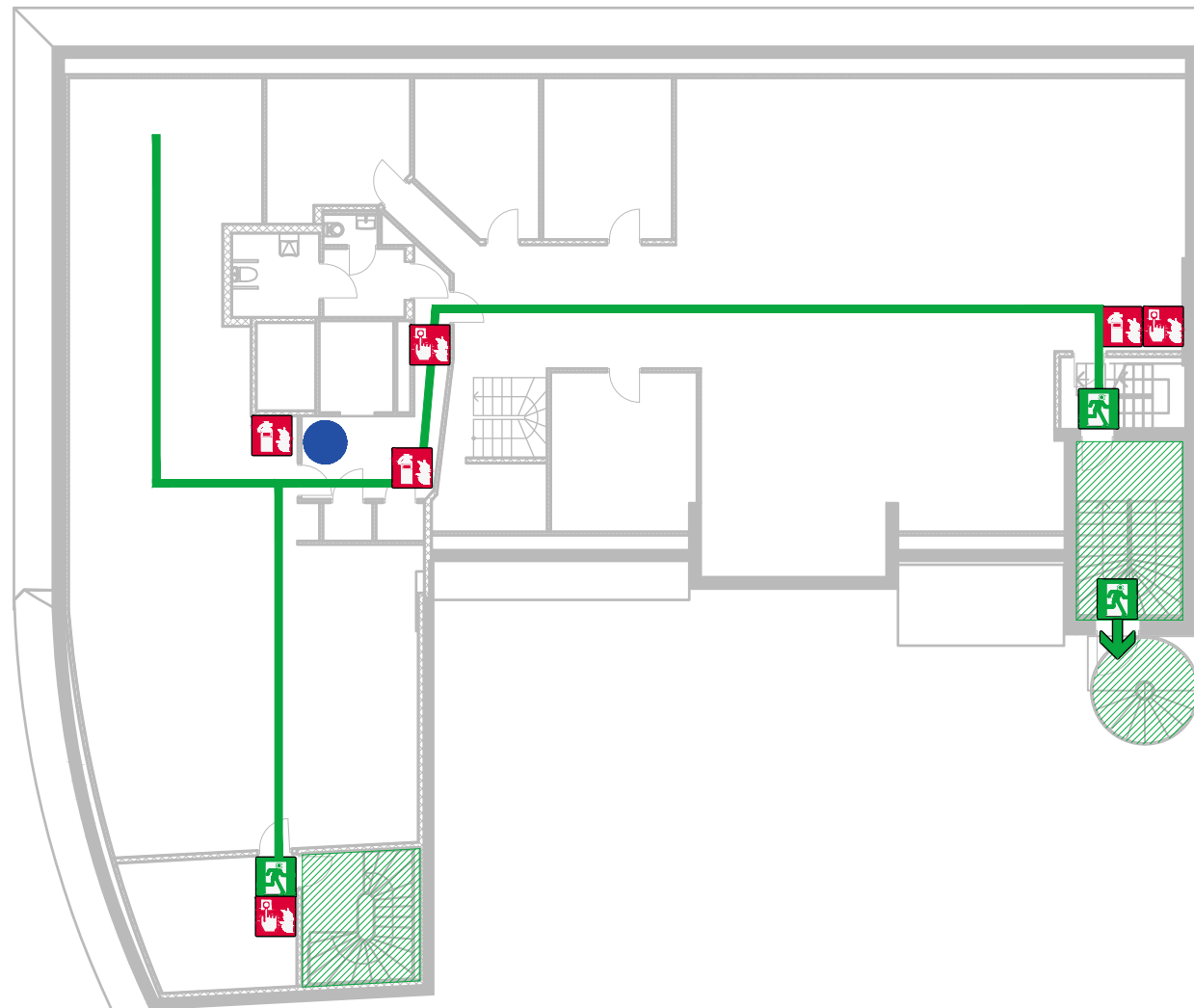
## LOKALISERINGSFIGUR



Laget dato: 22.06.2017  
Rev. dato: 22.06.2017  
Tegnet av: F.H.  
Prosjekt nr.: 615261

**Multiconsult**

# RØMNINGSPLAN / EVACUATION PLAN



St. Jakobs plass 9  
6. Etasje

## SYMBOLFORKLARING

	BRANNSLANGE FIRE HOSE
	HÅNDSLOKKER PORTABLE FIRE EXTINGUISHER
	MANUELL BRANNMELDER MANUAL CALL POINT
	RØMNINGSGANG ESCAPE EXIT
	SAMLINGSPLASS ASSEMBLY POINT
	UTGANG EXIT
	FLUKTVEI ESCAPE ROUTE
	HER STÅR DU YOU ARE HERE
	RØMNINGSGANG EXIT ACCESS

## BRANNINSTRUKS

Avhengig av forholdene:

**Redde:** Redd personer i umiddelbar fare.

**Varsle:** Bruk nærmeste manuelle melder.  
Ring: **110**

**Slukke:** Bruk nærmeste slukkemateriell.

**Rømme:** Bring deg selv i sikkerhet.

## FIRE INSTRUCTION

Depend on the situation:

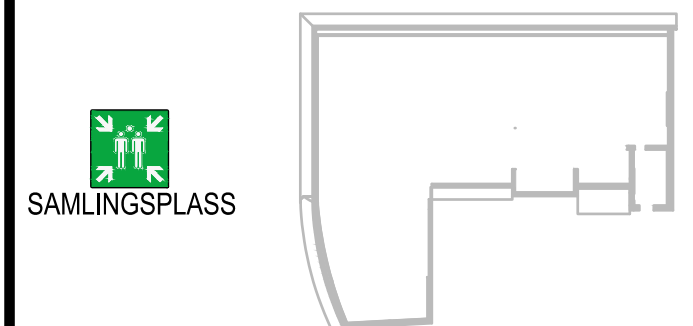
**Rescue:** Rescue persons in immediate danger.

**Alarm:** Activate the nearest manual call point.  
Call: **110**

**Extinguish:** Extinguish fire by using the nearest fire extinguish equipment.

**Evacuate:** Bring yourself to safety.

## LOKALISERINGSFIGUR



Laget dato: 22.06.2017  
Rev. dato: 22.06.2017  
Tegnet av: F.H.  
Prosjekt nr.: 615261

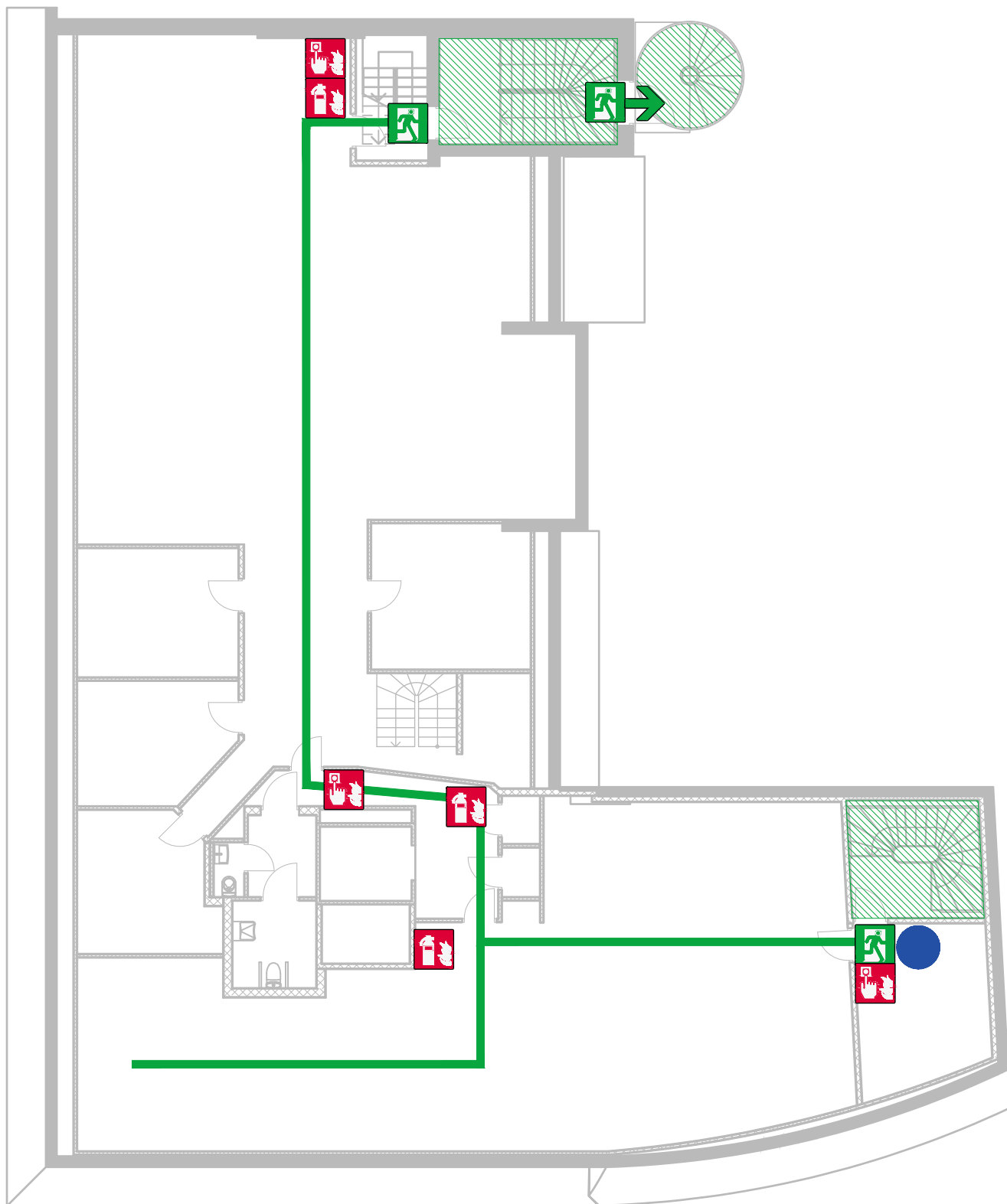
**Multiconsult**

# RØMNINGSPLAN / EVACUATION PLAN

St. Jakobs plass 9  
6. Etasje

## SYMBOLFORKLARING

	BRANNSLANGE FIRE HOSE
	HÅNDSLOKKER PORTABLE FIRE EXTINGUISHER
	MANUELL BRANNMELDER MANUAL CALL POINT
	RØMNINGSGANG ESCAPE EXIT
	SAMLINGSPLASS ASSEMBLY POINT
	UTGANG EXIT
	FLUKTVEI ESCAPE ROUTE
	HER STÅR DU YOU ARE HERE
	RØMNINGSGANG EXIT ACCESS



## BRANNINSTRUKS

Avhengig av forholdene:

**Redde:** Redd personer i umiddelbar fare.

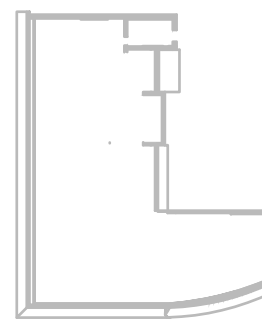
**Varsle:** Bruk nærmeste manuelle melder.  
Ring: **110**

**Slukke:** Bruk nærmeste slukkemateriell.

**Rømme:** Bring deg selv i sikkerhet.



## LOKALISERINGSFIGUR

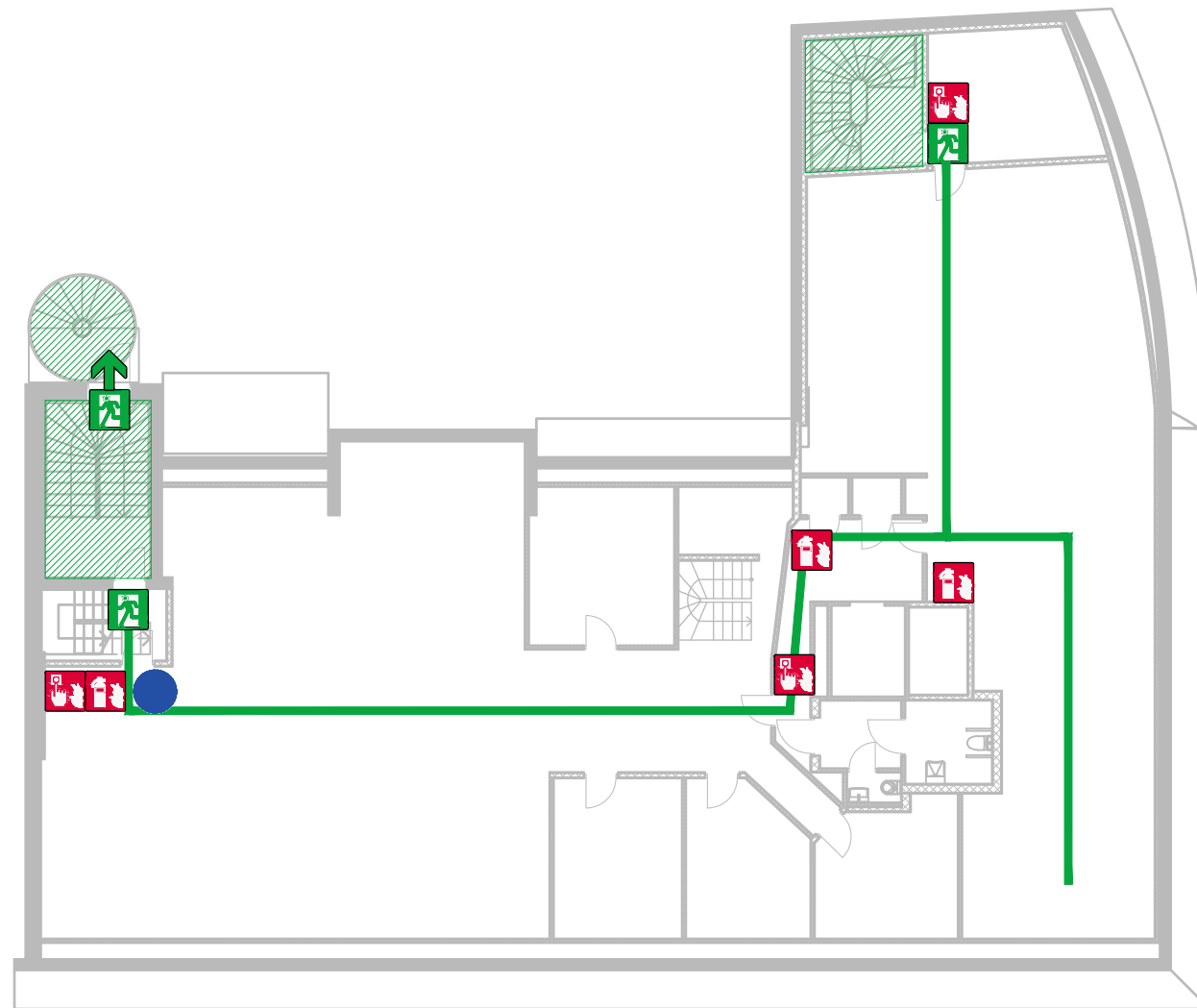


SAMLINGSPLASS

Laget dato: 22.06.2017  
Rev. dato: 22.06.2017  
Tegnet av: F.H.  
Prosjekt nr.: 615261

**Multiconsult**

# RØMNINGSPLAN / EVACUATION PLAN



St. Jakobs plass 9  
6. Etasje

## SYMBOLFORKLARING

	BRANNSLANGE FIRE HOSE
	HÅNDSLOKKER PORTABLE FIRE EXTINGUISHER
	MANUELL BRANNMELDER MANUAL CALL POINT
	RØMNINGSGANG ESCAPE EXIT
	SAMLINGSPLASS ASSEMBLY POINT
	UTGANG EXIT
	FLUKTVEI ESCAPE ROUTE
	HER STÅR DU YOU ARE HERE
	RØMNINGSGANG EXIT ACCESS

## BRANNINSTRUKS

Avhengig av forholdene:

**Redde:** Redd personer i umiddelbar fare.

**Varsle:** Bruk nærmeste manuelle melder.  
Ring: **110**

**Slukke:** Bruk nærmeste slukkemateriell.

**Rømme:** Bring deg selv i sikkerhet.

## FIRE INSTRUCTION

Depend on the situation:

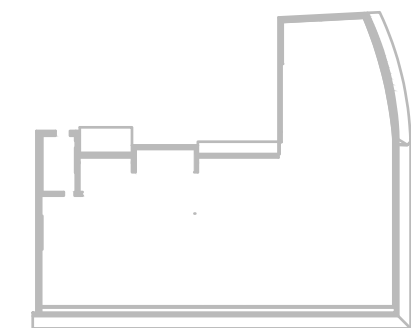
**Rescue:** Rescue persons in immediate danger.

**Alarm:** Activate the nearest manual call point.  
Call: **110**

**Extinguish:** Extinguish fire by using the nearest fire extinguish equipment.

**Evacuate:** Bring yourself to safety.

## LOKALISERINGSFIGUR

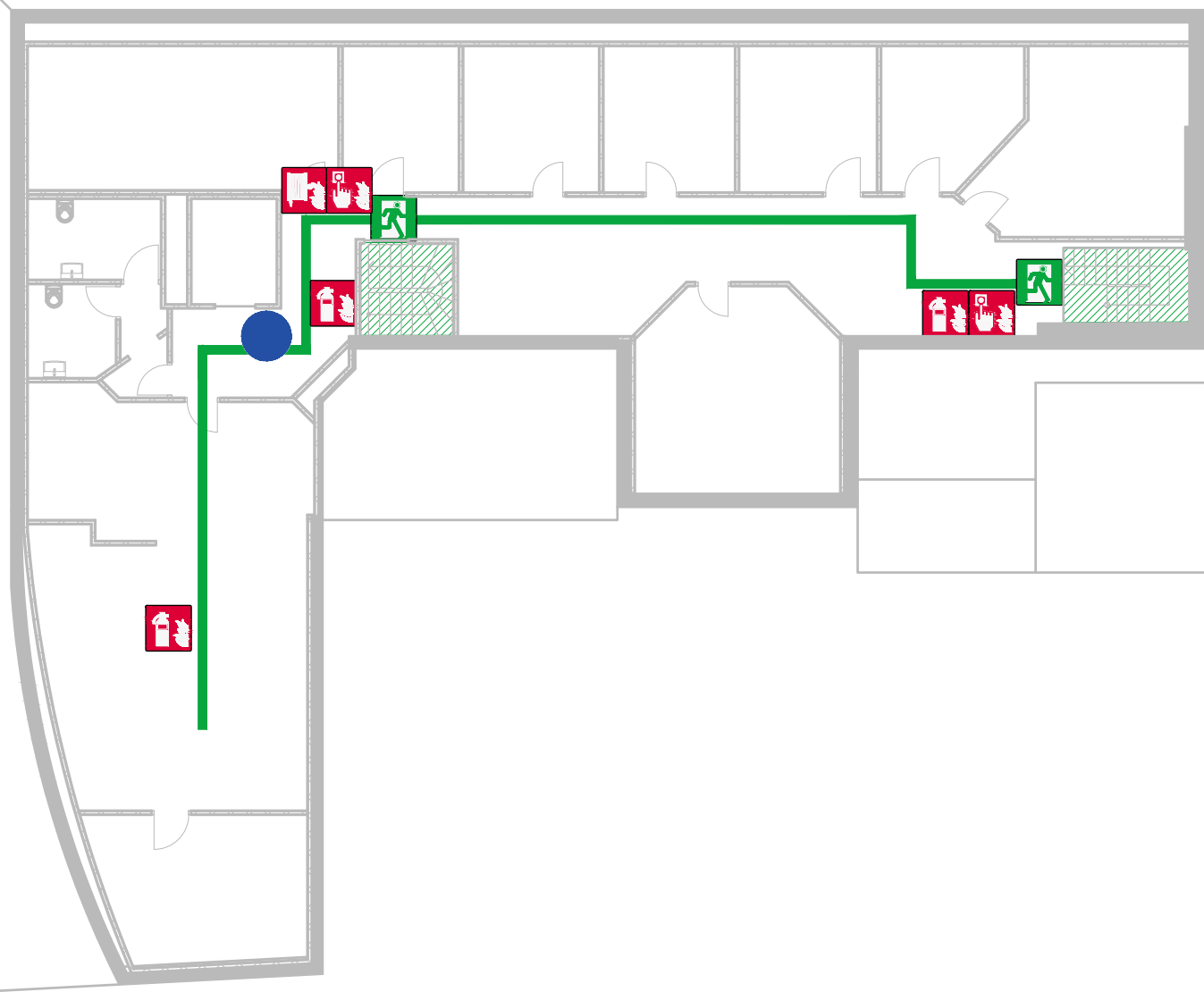


SAMLINGSPLASS

Laget dato: 22.06.2017  
Rev. dato: 22.06.2017  
Tegnet av: F.H.  
Prosjekt nr.: 615261

**Multiconsult**

# RØMNINGSPLAN / EVACUATION PLAN



St. Jakobs plass 9  
7. Etasje

## SYMBOLFORKLARING

	BRANNSLANGE FIRE HOSE
	HÅNDSLOKKER PORTABLE FIRE EXTINGUISHER
	MANUELL BRANNMELDER MANUAL CALL POINT
	RØMNINGSUTGANG ESCAPE EXIT
	SAMLINGSPLASS ASSEMBLY POINT
	UTGANG EXIT
	FLUKTVEI ESCAPE ROUTE
	HER STÅR DU YOU ARE HERE
	RØMNINGSVEI EXIT ACCESS

## BRANNINSTRUKS

Avhengig av forholdene:

**Redde:** Redd personer i umiddelbar fare.

**Varsle:** Bruk nærmeste manuelle melder.  
Ring: **110**

**Slukke:** Bruk nærmeste slukkemateriell.

**Rømme:** Bring deg selv i sikkerhet.

## FIRE INSTRUCTION

Depend on the situation:

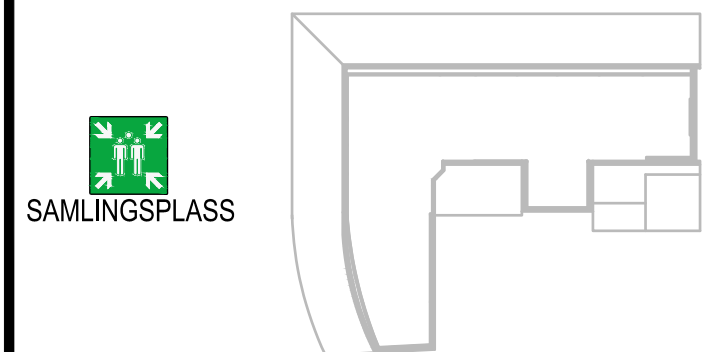
**Rescue:** Rescue persons in immediate danger.

**Alarm:** Activate the nearest manual call point.  
Call: **110**

**Extinguish:** Extinguish fire by using the nearest fire extinguish equipment.

**Evacuate:** Bring yourself to safety.

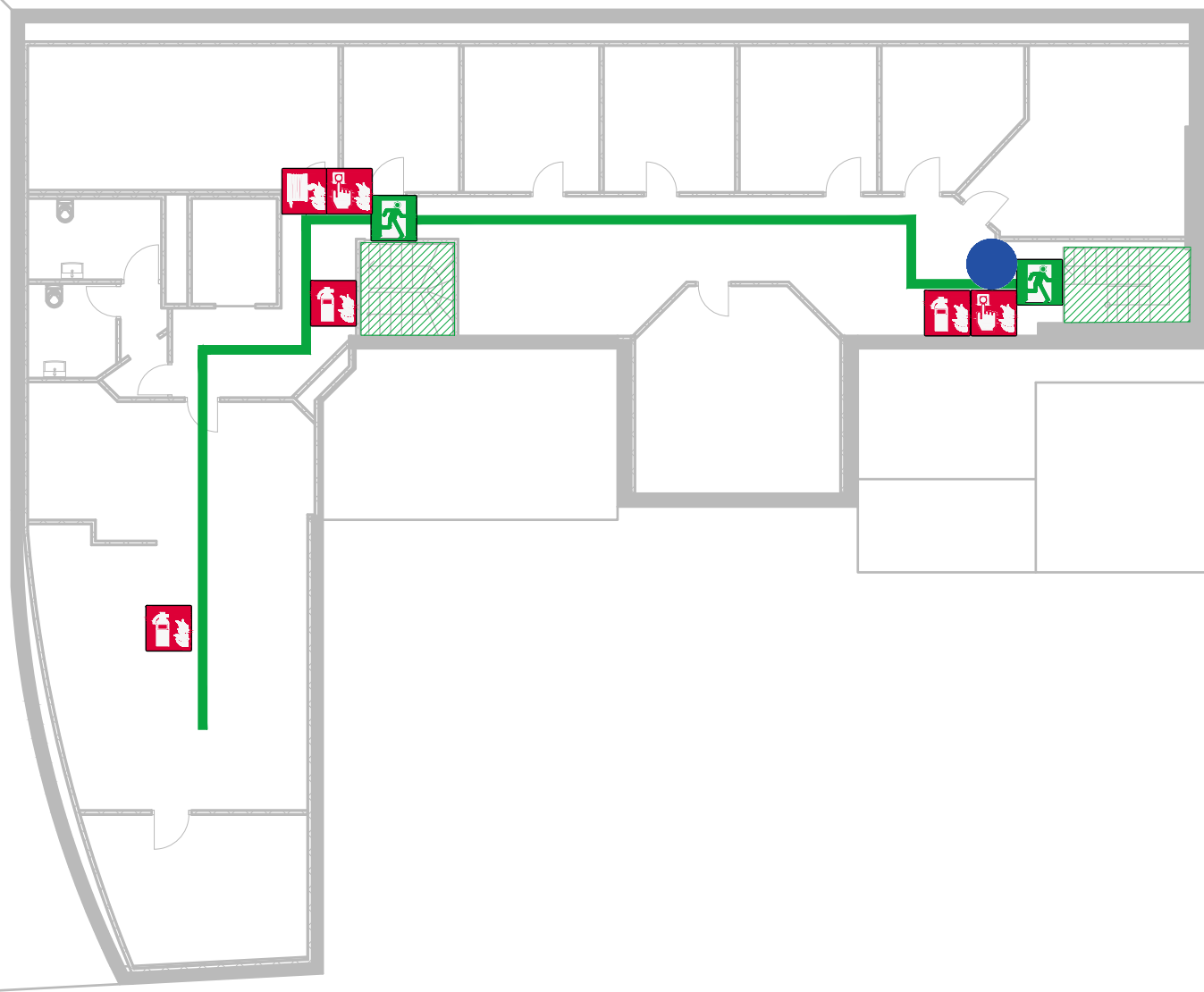
## LOKALISERINGSFIGUR



Laget dato: 22.06.2017  
Rev. dato: 22.06.2017  
Tegnet av: F.H.  
Prosjekt nr.: 615261

**Multiconsult**

# RØMNINGSPLAN / EVACUATION PLAN



St. Jakobs plass 9  
7. Etasje

## SYMBOLFORKLARING

	BRANNSLANGE FIRE HOSE
	HÅNDSLOKKER PORTABLE FIRE EXTINGUISHER
	MANUELL BRANNMELDER MANUAL CALL POINT
	RØMNINGSUTGANG ESCAPE EXIT
	SAMLINGSPLASS ASSEMBLY POINT
	UTGANG EXIT
	FLUKTVEI ESCAPE ROUTE
	HER STÅR DU YOU ARE HERE
	RØMNINGSVEI EXIT ACCESS

## BRANNINSTRUKS

Avhengig av forholdene:

**Redde:** Redd personer i umiddelbar fare.

**Varsle:** Bruk nærmeste manuelle melder.  
Ring: **110**

**Slukke:** Bruk nærmeste slukkemateriell.

**Rømme:** Bring deg selv i sikkerhet.

## FIRE INSTRUCTION

Depend on the situation:

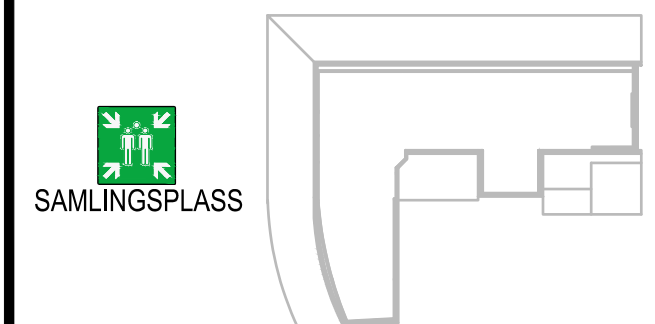
**Rescue:** Rescue persons in immediate danger.

**Alarm:** Activate the nearest manual call point.  
Call: **110**

**Extinguish:** Extinguish fire by using the nearest fire extinguish equipment.

**Evacuate:** Bring yourself to safety.

## LOKALISERINGSFIGUR



Laget dato: 22.06.2017  
Rev. dato: 22.06.2017  
Tegnet av: F.H.  
Prosjekt nr.: 615261

**Multiconsult**