

HORIZON

RESIDENCIAL



DOSSIER

INDEX

LOCATION

LUXURY AND EXCLUSIVITY

KITCHEN

BATHROOMS

FLOOR PLANS



LOCATION

Horizon Residencial is located on the corner between Guadiana Street and Ebro Pau Street in the city of Orihuela. This municipality in the province of Alicante stands out for its cultural and natural heritage; particularly remarkable are its historical centre its festivities and its beaches.

Close to the coast, Orihuela has 16 kilometers of cliffs surrounded by crystal clear waters and renowned fine sandy beaches.





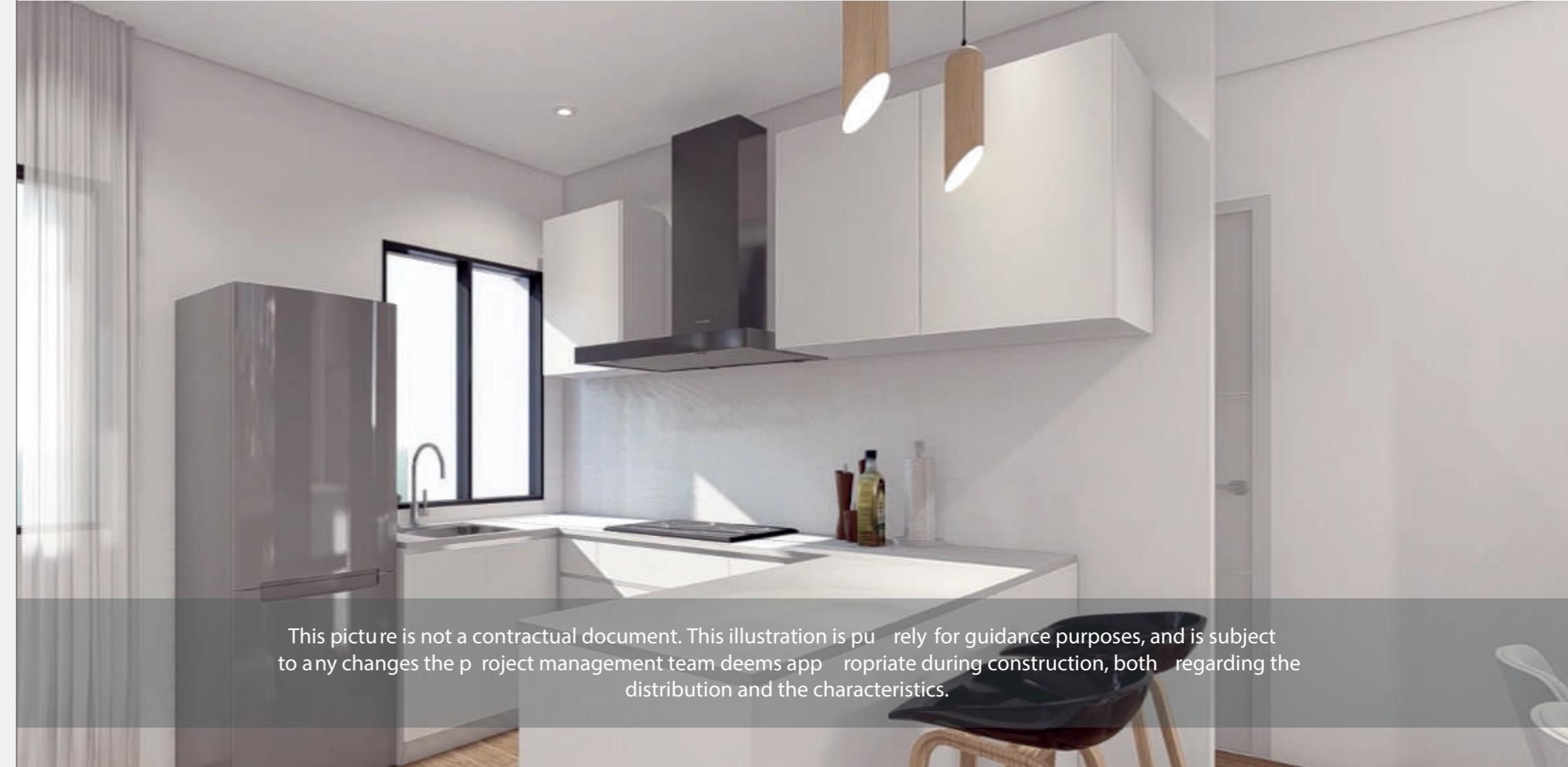
This picture is not a contractual document. This illustration is purely for guidance purposes, and is subject to any changes the project management team deems appropriate during construction, both regarding the distribution and the characteristics.

LUXURIOUS AND EXCLUSIVE DWELLINGS

- High energy-efficient electric DWH systems with low consumption
- Premium quality large-size stoneware floors with modern design.
- White lacquered wood carpentry and aluminum-coloured door fixtures.
- Recessed LED ceiling lights in entrance and corridors.
- White lacquered fitted wardrobes and large-sized sliding doors.
- AC pre-installation throughout the house.

COOK AND ENJOY

- Modern design fitted kitchen, base and top cabinets.
- Silestone worktop or similar.
- Integrated extraction hood with smoke exhaust.
- Single-lever mixer taps.
- Recessed LED ceiling lights.
- Design porcelain stoneware tiling kitchen floor.



This picture is not a contractual document. This illustration is purely for guidance purposes, and is subject to any changes the project management team deems appropriate during construction, both regarding the distribution and the characteristics.

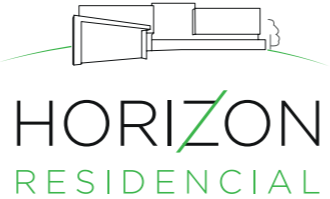
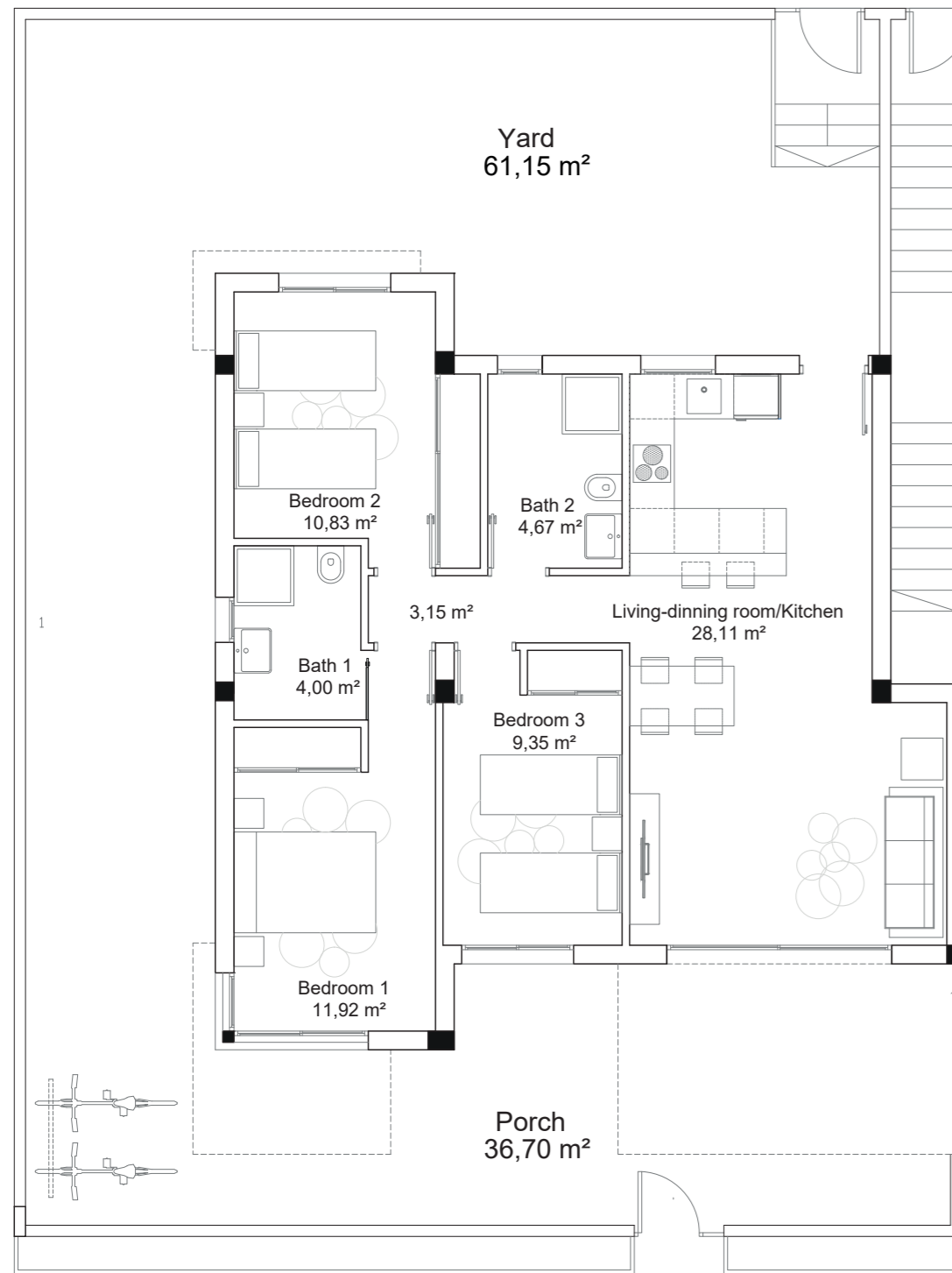
A RELAXING BATH?

- Suspended bathroom cabinet with worktop sink.
- Fitted mirror in bathrooms and toilets.
- Shower tray with tempered glass screen.
- Single-lever mixer taps.
- Stainless steel heated towel rails.
- Top-quality non-slip flooring.
- Recessed LED ceiling lights.
- Modern design premium stoneware tiles.
- Suspended toilet with concealed cistern

This picture is not a contractual document. This illustration is purely for guidance purposes, and is subject to any changes the project management team deems appropriate during construction, both regarding the distribution and the characteristics.



FLOOR PLANS



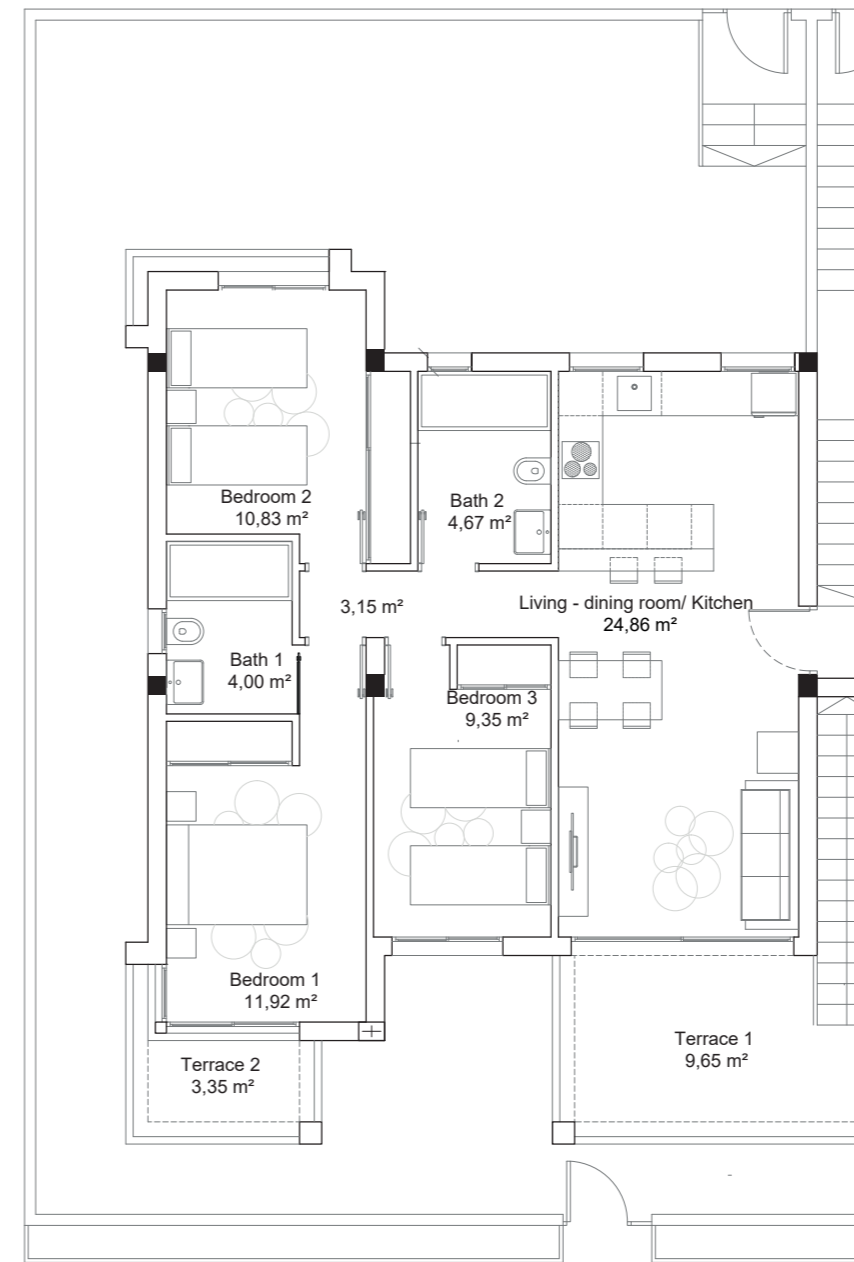
**Apartment 1 - Block 1
Ground Floor**

**Builed surface
79,21 m²**

**Useful surface
68,88 m²**

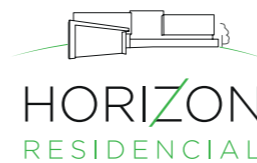
**Exterior
97,85 m²**

The information and graphic designs appearing on this plan are for guidance purposes only and may be subject to changes arising from the implementation plan and the construction. The rest of the information, as established in Royal Decree 515/1989 of 21st April, is available at our offices for consultation.



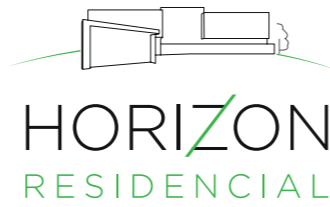
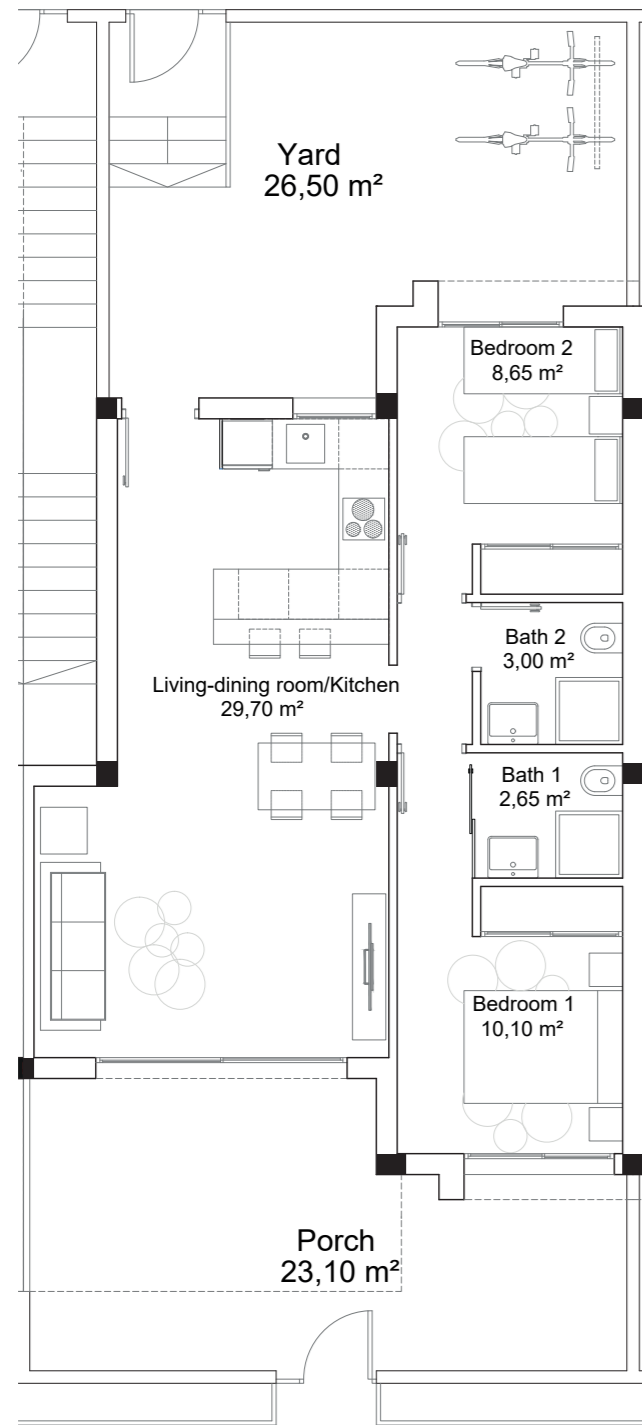
**Apartment 2 - Block 1
Top Floor**

**Solarium
79,45 m²**



Builed surface: 75,47 m² | Useful surface: 65,63 m² | Exterior: 92,45 m²

The information and graphic designs appearing on this plan are for guidance purposes only and may be subject to changes arising from the implementation plan and the construction. The rest of the information, as established in Royal Decree 515/1989 of 21st April, is available at our offices for consultation.



Apartment 3 - Block 1

Ground Floor

Builted surface

62,21 m²

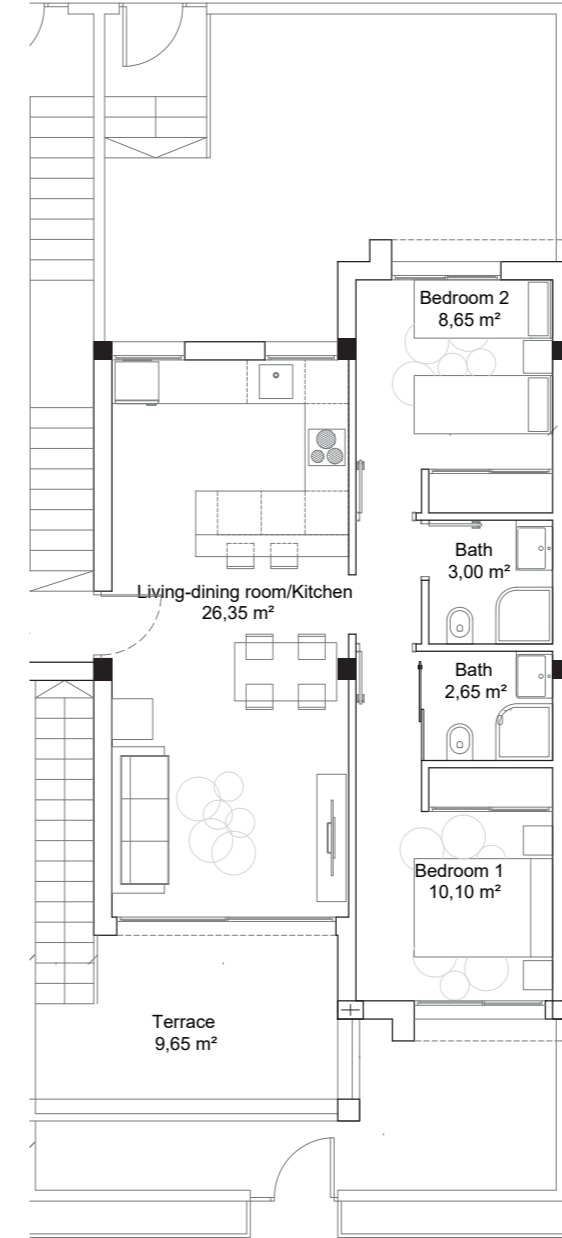
Useful surface

54,10 m²

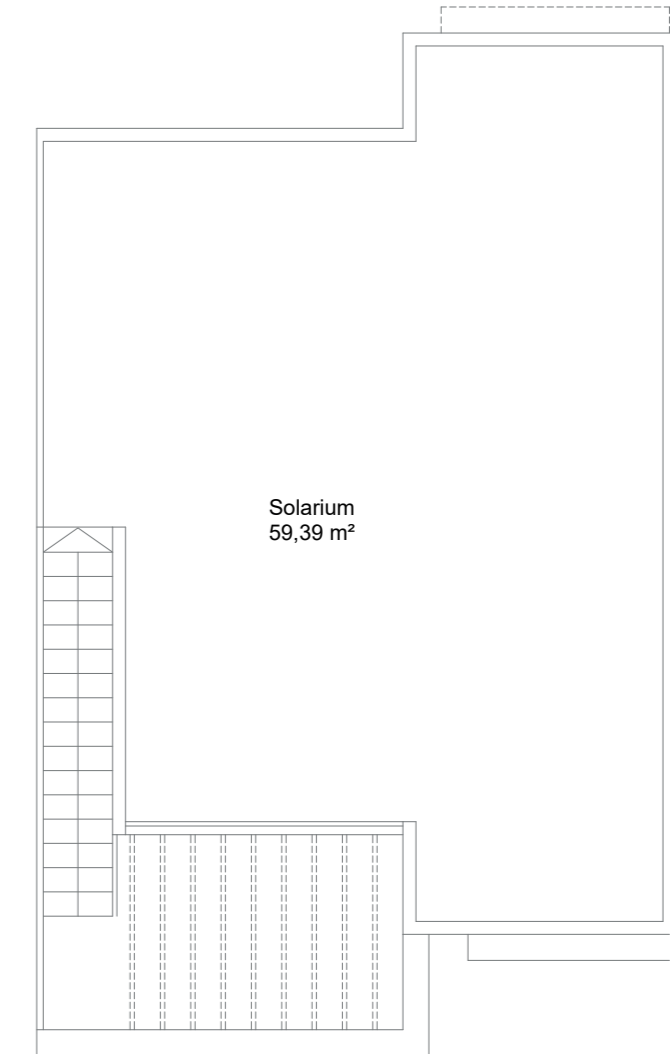
Exterior

49,60 m²

The information and graphic designs appearing on this plan are for guidance purposes only and may be subject to changes arising from the implementation plan and the construction. The rest of the information, as established in Royal Decree 515/1989 of 21st April, is available at our offices for consultation.

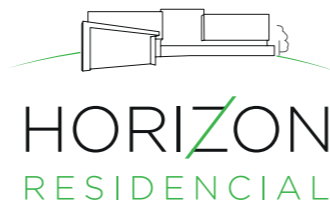
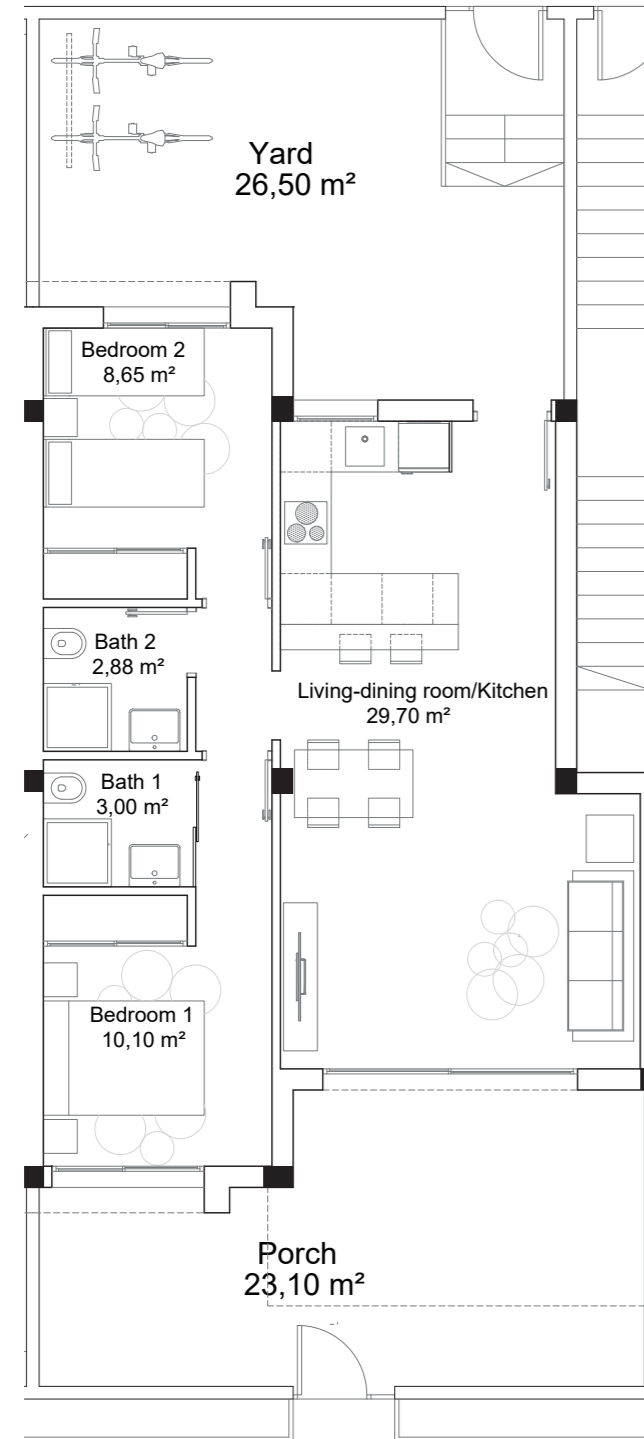


Apartment 4 - Block 1 Top Floor



Builted surface: 58,36 m² | Useful surface: 50,75 m² | Exterior: 69,04 m²

The information and graphic designs appearing on this plan are for guidance purposes only and may be subject to changes arising from the implementation plan and the construction. The rest of the information, as established in Royal Decree 515/1989 of 21st April, is available at our offices for consultation.



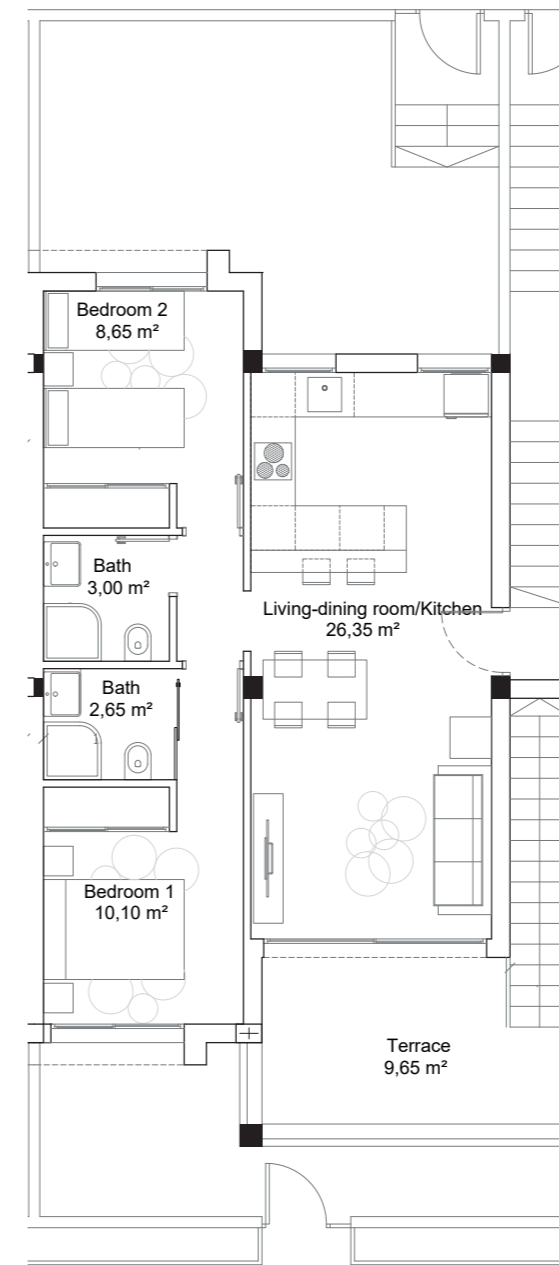
Apartment 5 - Block 1
Ground Floor

Builted surface
62,21 m²

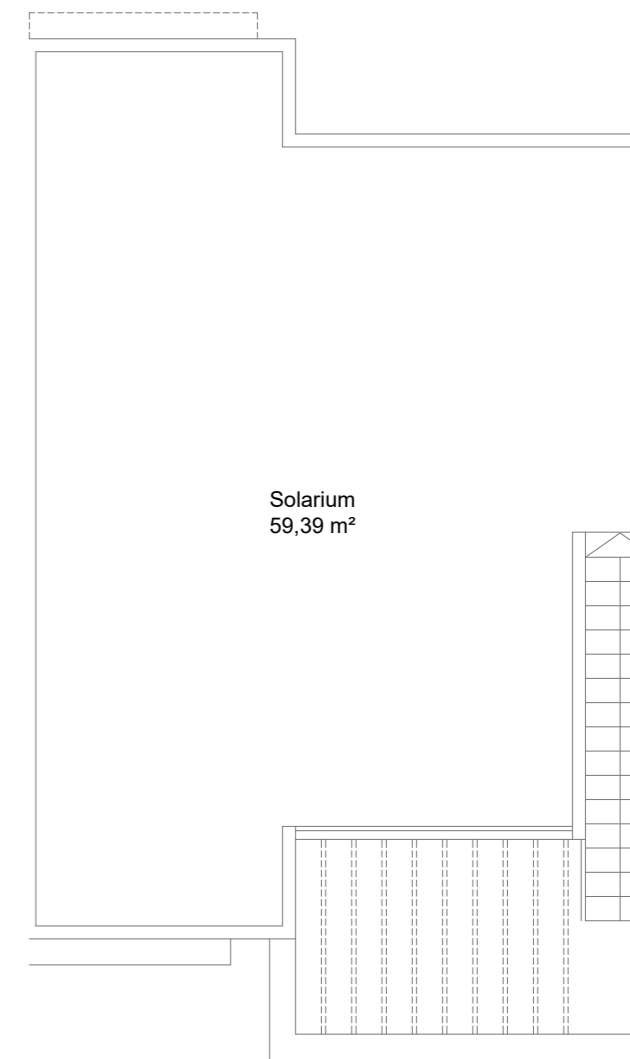
Useful surface
54,10 m²

Exterior
49,60 m²

The information and graphic designs appearing on this plan are for guidance purposes only and may be subject to changes arising from the implementation plan and the construction. The rest of the information, as established in Royal Decree 515/1989 of 21st April, is available at our offices for consultation.



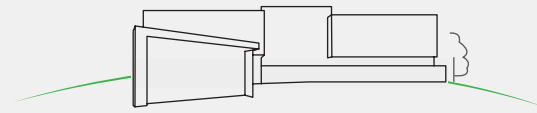
Apartment 6 - Block 1 Top Floor



Solarium
59,39 m²

Builted surface: 58,36 m² | Useful surface: 50,75 m² | Exterior: 69,04 m²

The information and graphic designs appearing on this plan are for guidance purposes only and may be subject to changes arising from the implementation plan and the construction. The rest of the information, as established in Royal Decree 515/1989 of 21st April, is available at our offices for consultation.



HORIZON

RESIDENCIAL

www.elsolgrupo.com

 +34 684 633 529 / on@elsolgrupo.com

SALES STORE - EL SOL GRUPO
C/ Jovellanos, 10, 33206 - Gijón



HORIZONTE
REAL·ESTATE



EL SOL GRUPO
CONSULTING INMOBILIARIO