

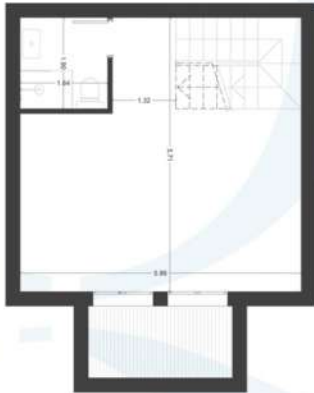
Easy Living Costa Blanca



FIRST FLOOR



OPTIONAL BASEMENT



Home n°02



PRIVATE PLOT	351m ²
TOTAL CONSTRUCTED AREA*	232,68m ²
TOTAL USABLE AREA*	164,43m ²

(*) Optional basement included

URBANIZATION



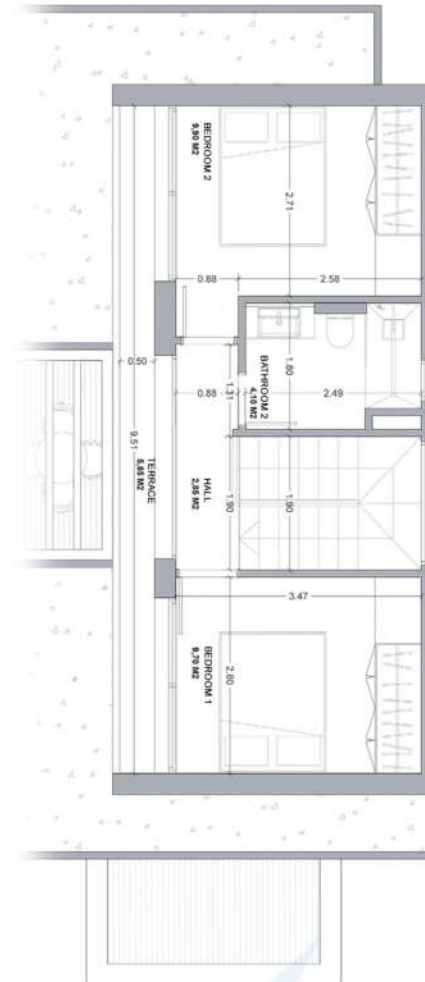
Home n°02



ENTRANCE FLOOR



FIRST FLOOR



PRIVATE PLOT 351m²

CONSTRUCTED AREA* 232,68m²

ENTRANCE FLOOR 85,92m²

FIRST FLOOR 39,50m²

TERRACE ENTRANCE FLOOR 26,00m²

TERRACE FIRST FLOOR 6,00m²

POOL AREA 28,00m²

OPTIONAL BASEMENT 47,26m²

USABLE AREA* 164,43m²

ENTRANCE FLOOR 89,98m²

LIVING DINING KITCHEN 43,45m²

POWDER ROOM 2,70m²

MASTER BEDROOM 12,53m²

MASTER BATHROOM 5,30m²

TERRACE 26,00m²

FIRST FLOOR 36,90m²

STAIRCASE 4,90m²

CORRIDOR 2,65m²

BEDROOM 2 9,70m²

BEDROOM 3 9,90m²

BATHROOM 2 4,10m²

TERRACE 5,65m²

OPTIONAL BASEMENT FLOOR 37,55m²

DIAFANOUS ROOM 24,65m²

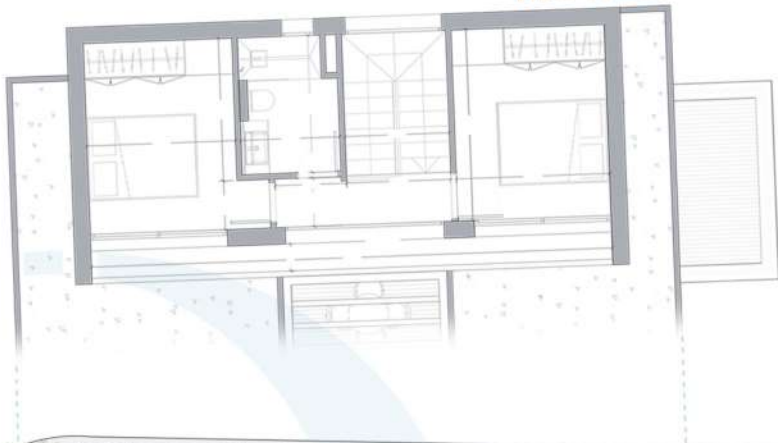
BATHROOM 3,50m²

STAIRCASE 4,90m²

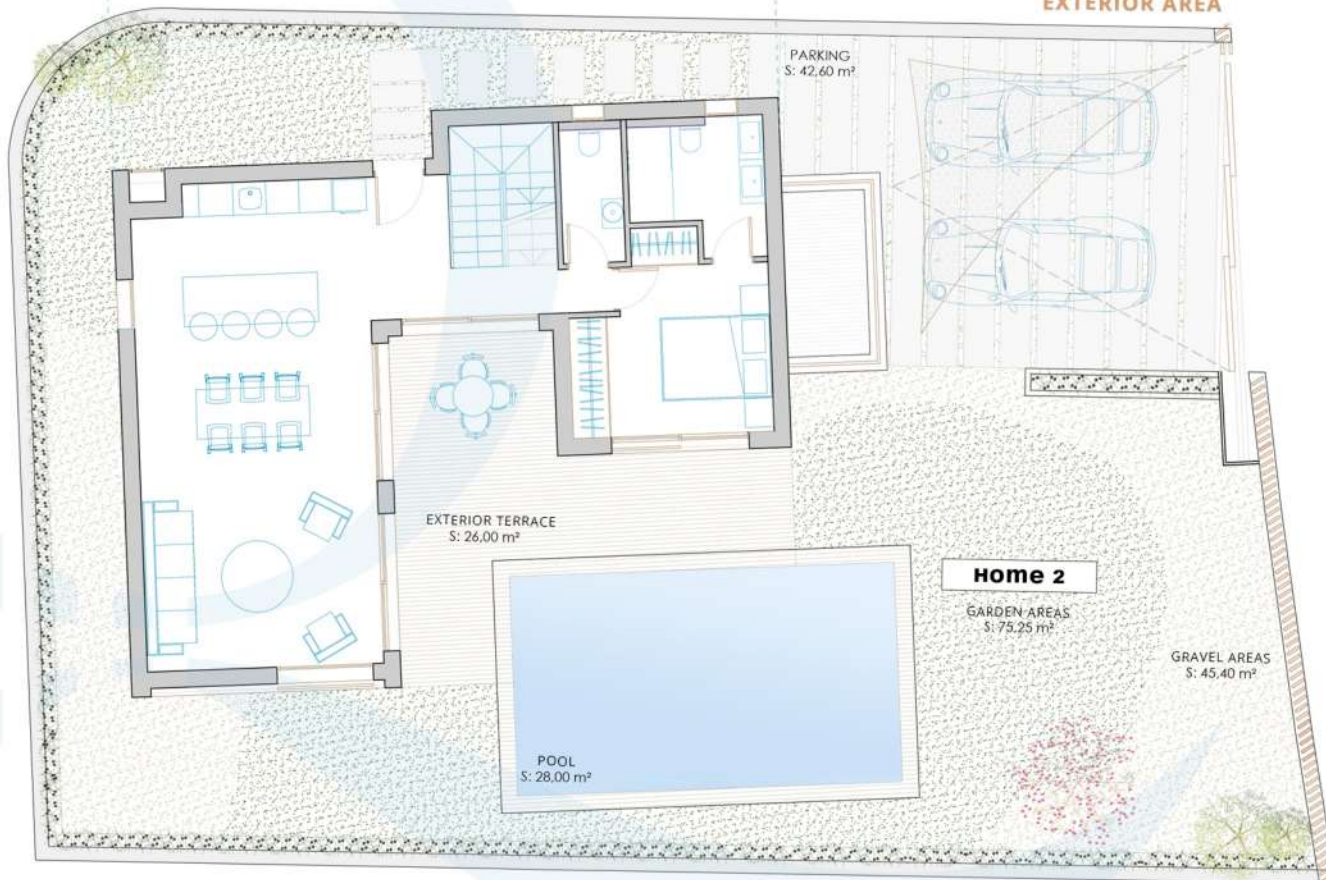
ENGLISH PATIO 4,50m²

(*) Optional basement included

FIRST FLOOR



EXTERIOR AREA



Home n°02



PRIVATE PLOT	351m ²
USABLE AREA EXTERIOR	191,25m ²
POOL	28,00m ²
GARDEN AREA	75,25m ²
GRAVEL AREA	45,40m ²
PARKING	42,60m ²

We care for the world by caring for your world