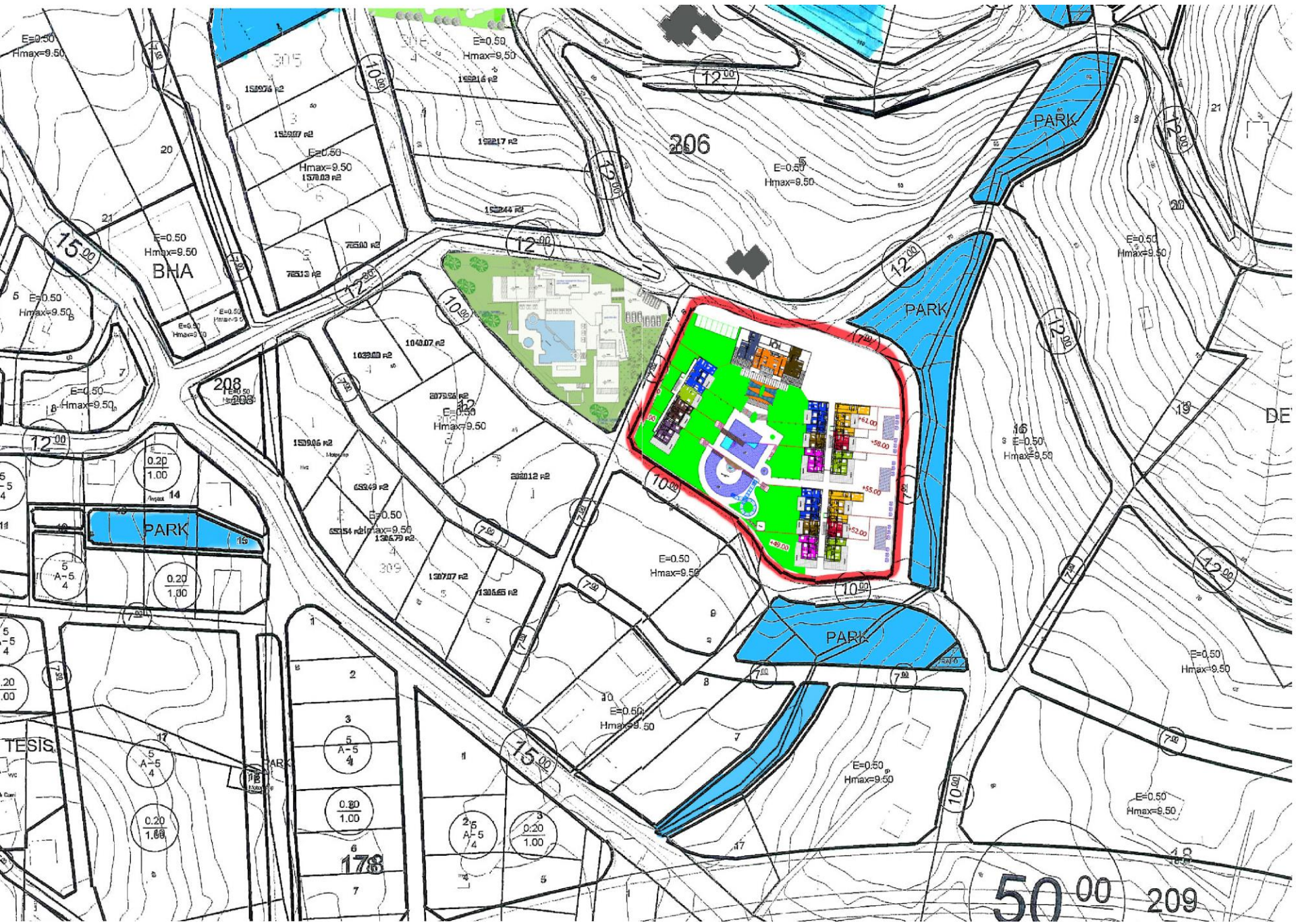
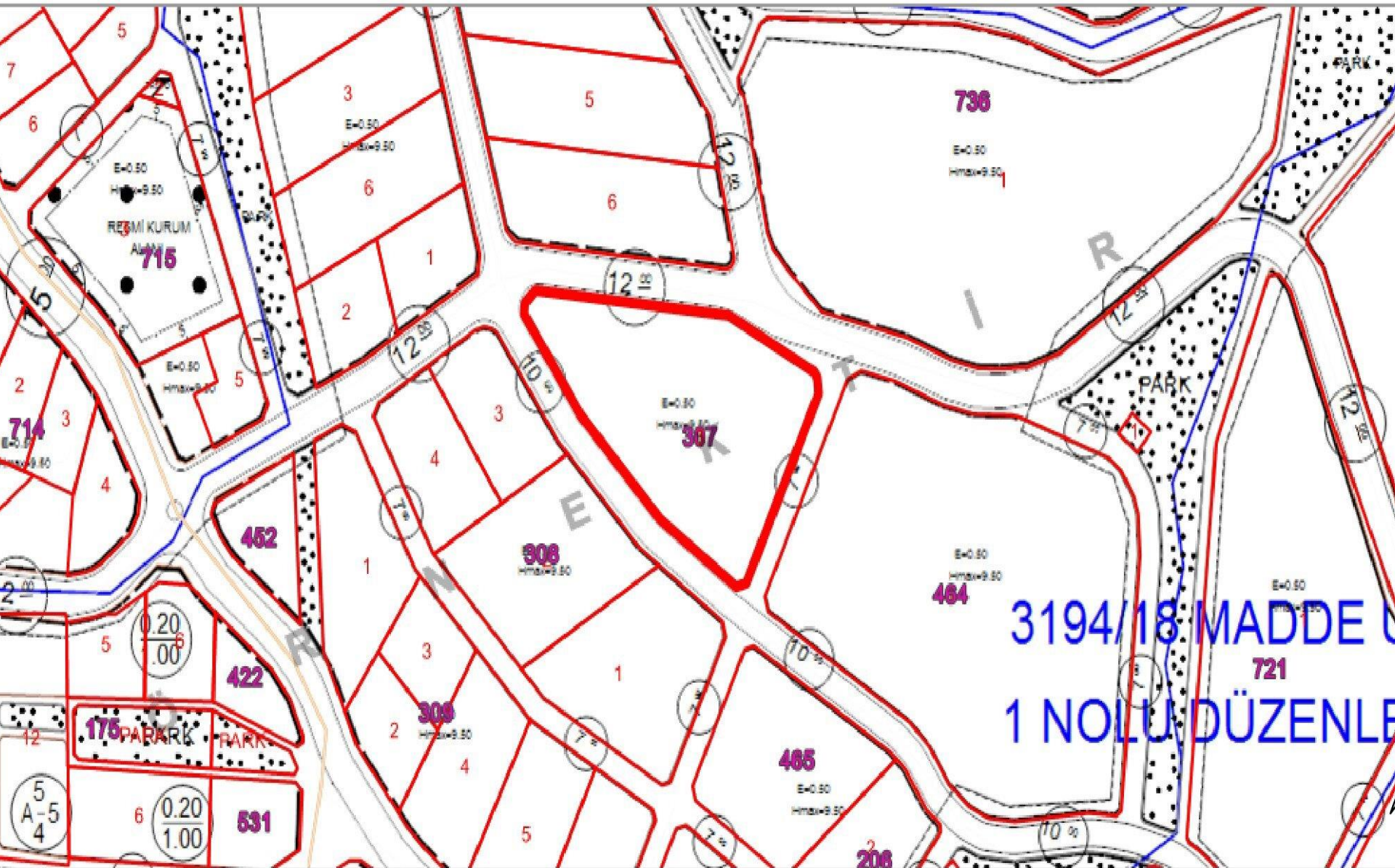


ARAMIS TERRACE I





Basic Alanya 
- Your home in the sun



Property Aramis Terrace 1

Address: Cikcilli Kasabasi, 309 sokak, 07400 Alanya Plot No. 307

Parsel no: 3

Architect

IBAT Bostanci

organization

Apartments at Aramis Terrace is freehold.

Start of construction

01/02/12

common expenses

Common expenses, such as municipal taxes, common electricity, janitor, cleaning, technical operations, business management will charge the individual.

Common expenses are determined by the general meeting of the condominium on a proposal from the board / business.

Garage

parking inside the area.

Public taxes

It will at all times be set by the Turkish state/municipality will apply. Changes must be expected.

Finance

The amount is paid 100% when the Tapu delivery

Heating and ventilation

The apartments are equipped with AC that can be used as air conditioning and heat source. It is also heating in entrance and bathroom floors. Each apartment has mechanical exhaust from the kitchen.

Elektronic

Each apartment gets individual electricmeter of consumption. Power consumption in common areas divided according to a co-ownership fraction.

Each apartment gets connectors for TV and telephone.

Audio / fire safety requirements

The buildings are constructed in accordance with the applicable technical regulations.

Elevator

Each block has its own elevator

Digital TV

Owner is bought internet TV by theirself

Internet

Common wireless internet connection is available throughout the resort. future demands for speed and stability makes it possible to have private internet connection.

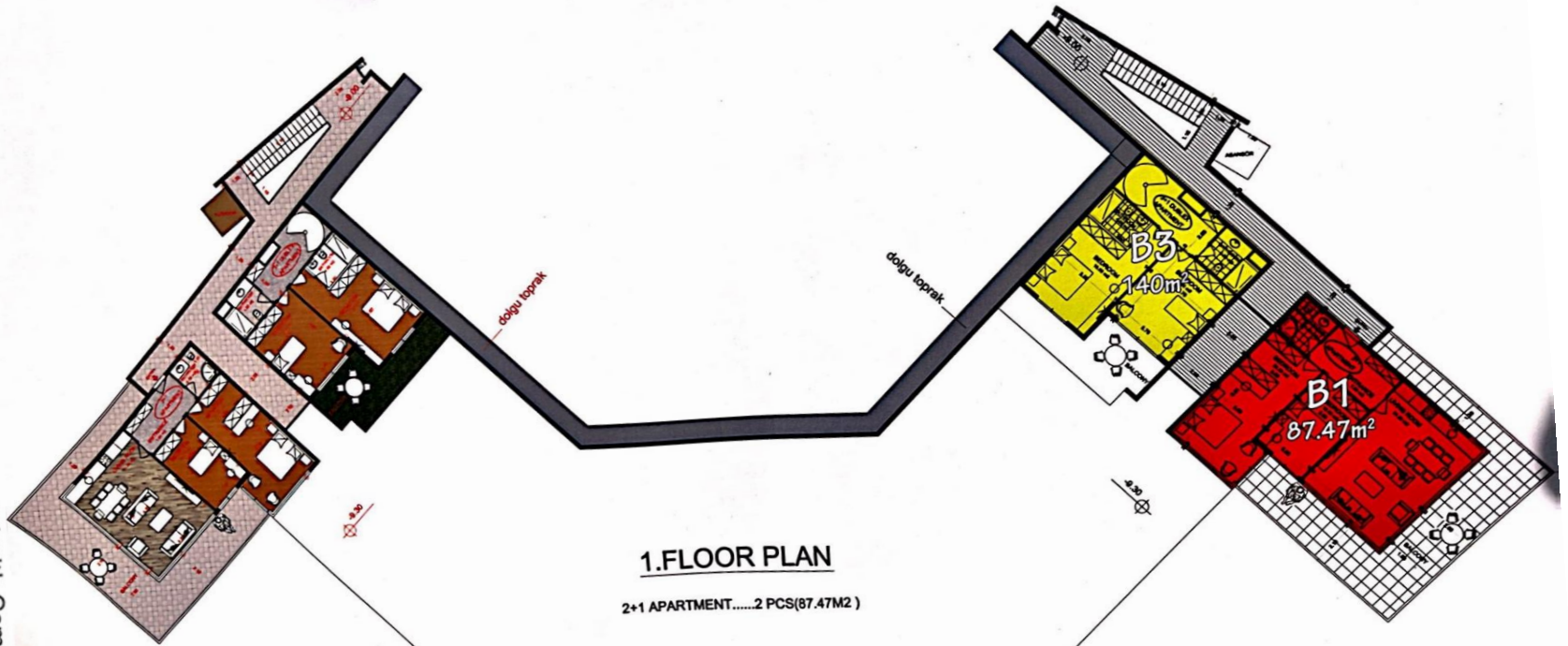
SWIMMING POOL:

- Swimming pool with water slide
- Outdoor swimming pool heating

SPECIFICATIONS:

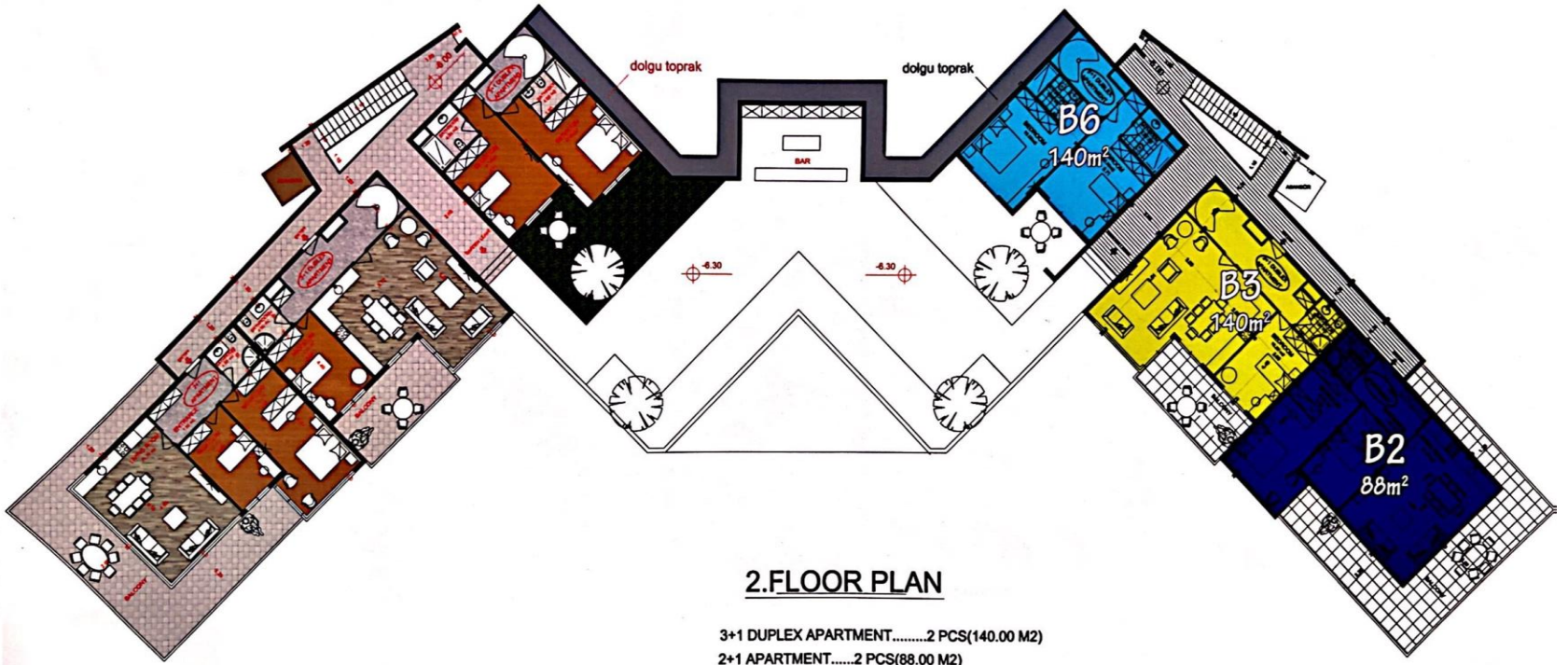
- contracting, bedrooms-, lounge and kitchen floor in half glossy granite tiles.
- Heating cables in the living room, kitchen and bathroom.
- Water pipes to the kitchen and bathroom as well as in other water pipes in the building shall be TSE-approved plastic pipes. It is mounted TSE -approved water heater type "shock heats".
- Kitchen and bathroom fittings in MDF and lacquered painted
- Kitchen Worktop in top quality granite.
- Appliances incorporated in kitchen, washing machine placed on custom place.
- White exterior doors of type TSE-approved steel doors.
- Compact white interior doors.
- Double glazed windows with an Aluminum frame.
- Piping for dishwasher and washing machine.
- Electrical System TSE approved.
- Air conditioning installed in the living room and all bedrooms.
- According to the prospectus and municipal zoning top grade acrylic or silicone paint.
- TV outlet in one bedroom and living room.
- Prepared for telephone.
- Common generator.
- Large pool area in the middle of the facility over three floors and top level is with heating pump
- Separate pool for the children.
- Community multimedia room for movies and games.
- Cinema room
- Sauna and fitness

Scanned with CamScanner



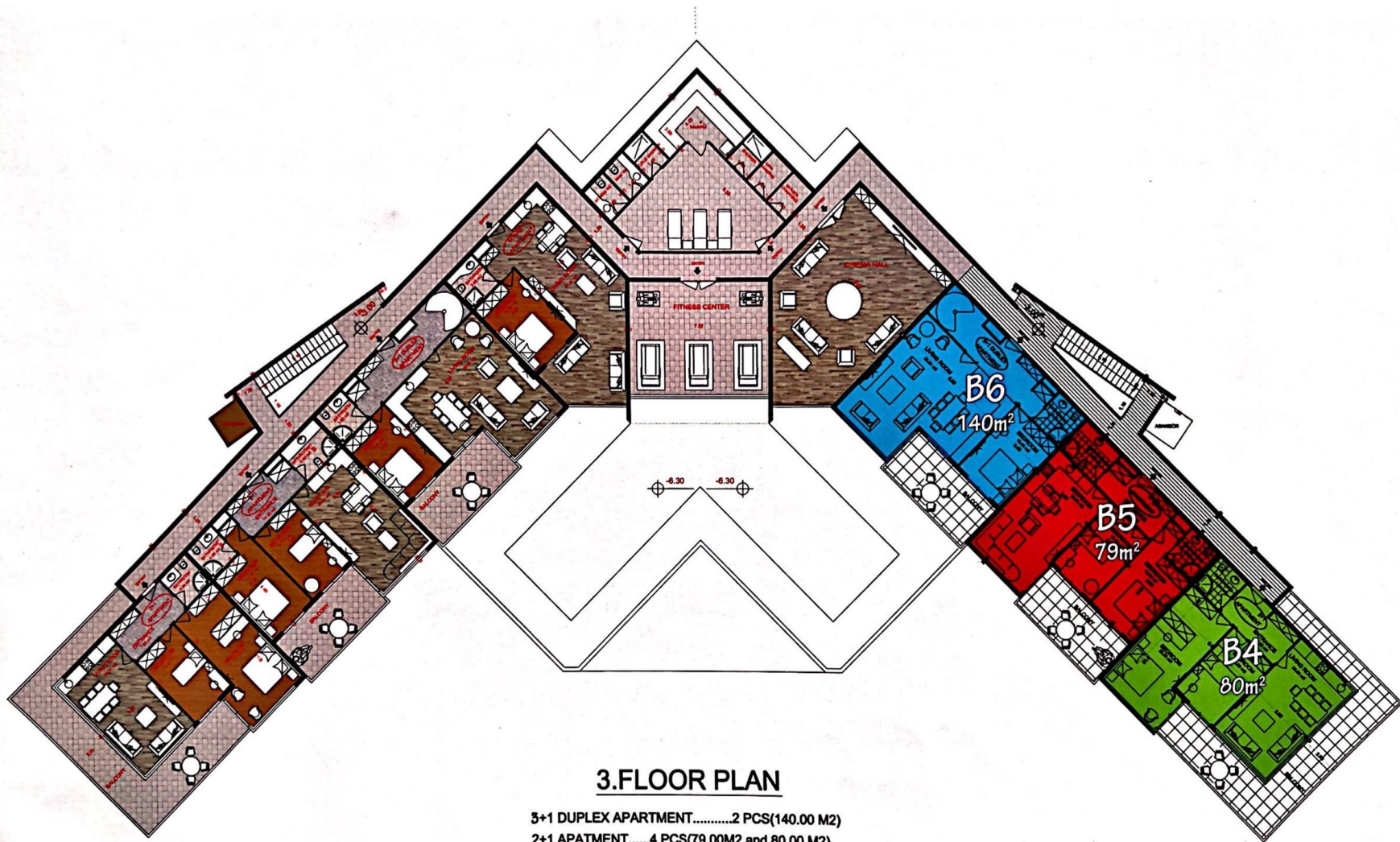
1.FLOOR PLAN

2+1 APARTMENT.....2 PCS(87.47M2)



2. FLOOR PLAN

3+1 DUPLEX APARTMENT.....2 PCS(140.00 M2)
2+1 APARTMENT.....2 PCS(88.00 M2)



3.FLOOR PLAN

3+1 DUPLEX APARTMENT.....2 PCS(140.00 M2)

2+1 APARTMENT.....4 PCS(79.00M2 and 80.00 M2)



4.FLOOR PLAN

- 3+1 APATMENT.....2 PCS(149.00 m2)
- 2+1 APATMENT.....2 PCS(79.00M2)
- 1+1 APATMENT.....2 PCS(53.00M2)



5.FLOOR PLAN

3+1 APATMENT.....2 PCS(132.00 m2)
 2+1 APATMENT.....2 PCS(70.00M2)



6.FLOOR PLAN

3+1 APATMENT.....2 PCS(132.00 m2)