

# VIVIENDA HOUSE

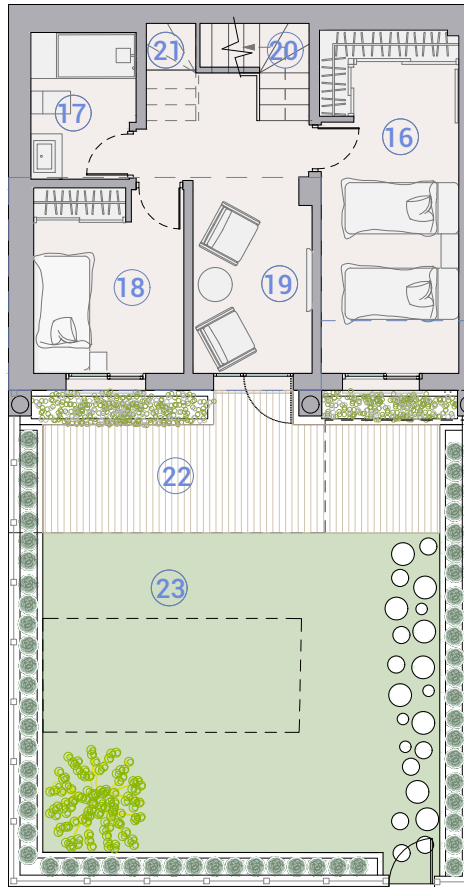
# 26

Planta Floor | Inferior

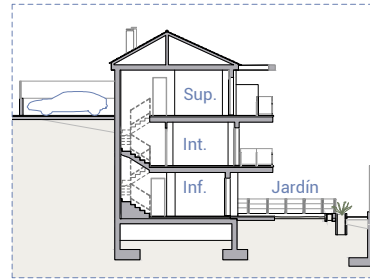
2/2



NWCIA  
VILLAGE

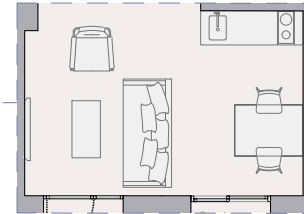


Opción 1: Bedroom + TV room  
Planta / Floor Inferior

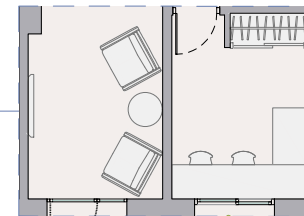


Sección / Section

Opciones distribución  
Distribution options

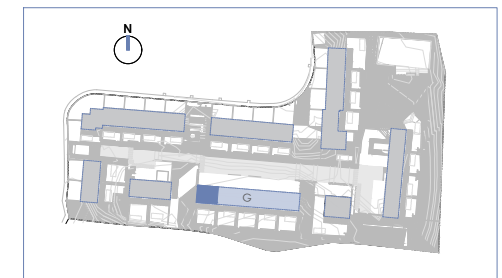


Opción 2: Living + kitchenette  
Planta / Floor Inferior

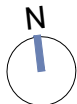


Opción 3: Home office + TV room  
Planta / Floor Inferior

TIPO / TYPE 26	PLANTA / FLOOR	SUP. / FLOOR	sup útil (m2) sup const. (m2)		
			floor area (m2)	built area (m2)	
PLANTA / FLOOR SUP.	1. Recibidor / Hall		1,80		
	2. Salón comedor cocina / Living dining kitchen		32,73		
	3. Aseo / Toilet		2,60		
	4. Galería / Gallery		1,80		
	5. Escalera / Stairs		4,23		
	<b>Interior / Indoor</b>			<b>43,16</b>	
	6. Aparcamiento / Parking				40,97
	7. Terraza / Terrace				17,40
	8. Acceso / Access				2,34
	<b>Exterior / Outdoor</b>				<b>60,71</b>
	PLANTA / FLOOR INT.	9. Dormitorio 1 / Bedroom 1		17,56	
		10. Dormitorio 2 / Bedroom 2		11,51	
		11. Distribuidor 1 / Hall 1		2,77	
		12. Baño 1 / Bathroom 1		6,32	
		13. Escalera / Stairs		4,08	
14. Baño 2 / Bathroom 2			4,82		
<b>Interior / Indoor</b>			<b>47,06</b>		
15. Terraza / Terrace				10,74	
<b>Exterior / Outdoor</b>				<b>10,74</b>	
PLANTA / FLOOR INF.	16. Estancia residencial D3 / Residential room D3		14,54		
	17. Baño 3 / Bathroom 3		4,65		
	18. Estancia residencial D4 / Residential room D4		8,52		
	19. Sala TV / TV room		12,40		
	20. Instalaciones / Facilities		2,49		
	21. Trastero / Storage room		0,76		
	<b>Interior / Indoor</b>			<b>43,36</b>	
	22. Jardín solado / Paved garden				20,21
	23. Jardín con césped / Grass garden				50,24
	<b>Exterior / Outdoor</b>				<b>70,45</b>
<b>SUP. ÚTIL INT. VIV. / FLOOR INT. AREA APARTMENT</b>			<b>133,58</b>		
<b>SUP. CONST. INT. VIV. / BUILT INT. AREA APARTMENT</b>				<b>168,95</b>	
<b>TOTAL CON EXTERIORES / TOTAL WITH OUTDOORS</b>				<b>310,85</b>	
<b>SUPERFICIE DE PARCELA / PLOT AREA</b>				<b>167,48</b>	



Escala gráfica



Plano sujeto a posibles modificaciones por razones de índole técnica, jurídica o administrativa. Las superficies son aproximadas. Cocina y amueblamiento orientativo, sin valor contractual.  
Plans subject to possible modifications for technical, legal or administrative reasons. Measurements shown are approximate. Kitchen and furnishings are for display purposes only, with no contractual value.

Fecha Edición: Enero 2024

