



# EL CEDRO VILLAGE

PERFECT COMBINATION OF MODERN  
TECHNOLOGIES, DEVELOPED  
INFRASTRUCTURE AND UNIQUE NATURE



# EL CEDRO VILLAGE

The residential complex combines three key components: the surrounding nature with its breathtaking beauty, developed infrastructure, and perfect quality of the built objects.

This combination makes the complex ideal for both living and investing.

---

## NATURE



The complex is located close to the Mediterranean coast, surrounded by pine forests and protected from the winds by the Aichorta mountain range, which offers a mesmerizing panoramic view.

---

## INFRASTRUCTURE



Convenient transportation infrastructure, schools, hospitals, restaurants, stores, airport, sports complexes - all the benefits of a modern metropolis surrounded by pristine nature

---

## QUALITY



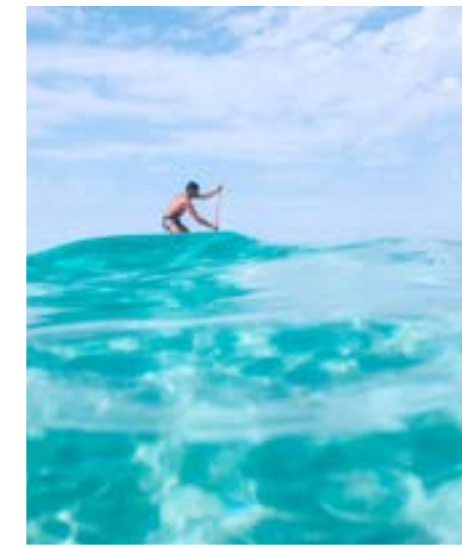
When creating the object, we united the best market players involved in all stages of real estate construction: from architects and interior designers to the best contractors and suppliers of construction materials and components.

---

# NATURE



The complex is located in La Nucia on the Costa Blanca, in a unique natural location where waterfalls, forests, nature reserves, coves, beaches, meadows are accessible from the south side, and the region is protected from the northern, cold winds by mountain ranges.



Mediterranean Sea



- LA AIXORTA AND LA AITANA MOUNTAIN RANGES
- LEGENDARY LEVANTE BEACH
- THE RESERVE TOWN OF GUADALEST IS ONE OF THE MOST VISITED PLACES IN SPAIN
- ALGAR'S WATERFALLS
- INCREDIBLY BEAUTIFUL BAYS



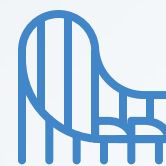
# INFRASTRUCTURE



Benidorm (Spain's Las Vegas) with lots of fun activities



Supermarkets, banks, schools, hospitals, restaurants.



4 huge amusement parks for children: Terra Mitica, Terra Natura, Mundomar Aquapark



Convenient transport interchanges, parking lots, charging stations for electric vehicles



The largest sports complex in Europe



Proximity (40 km) to Alicante Airport

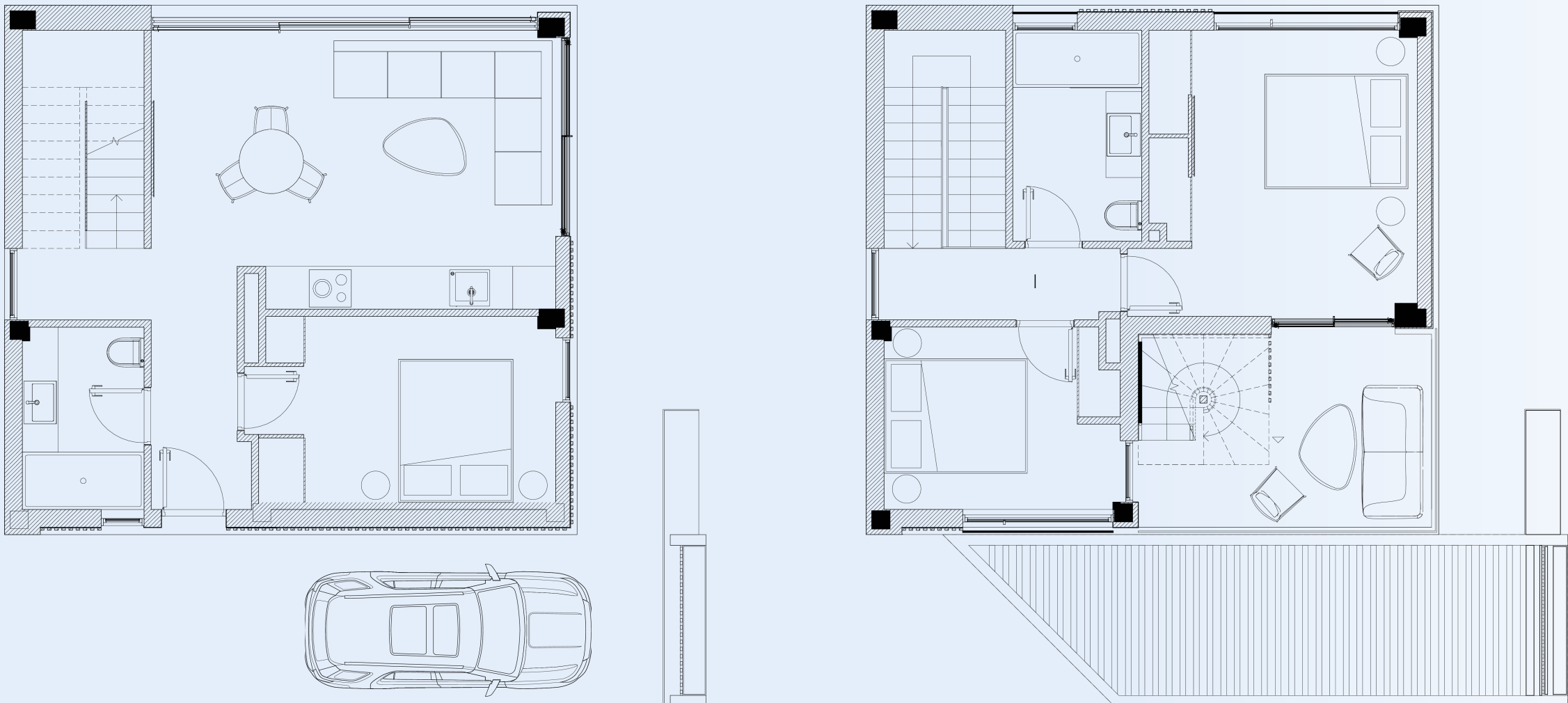


Entertainment for children and many attractions





# ABOUT THE PROJECT



All objects are created taking into account the specifics of further exploitation of real estate, and climatic features of the region, which guarantees convenience and durability of erected objects.

**6**

Individual two-storey villas with parking lots

**3x8M**

Swimming pool on the territory of each villa

**120 sq.m.**

Area of villas

**2024**

Date of delivery of the facility

**2**

Bathrooms

**3**

Bedrooms









# ABOUT THE PROJECT

ADVANCED NOISE  
INSULATION  
SYSTEM

ENERGY  
SAVING  
SYSTEM

AUTONOMOUS  
WATER SUPPLY  
SYSTEM

GUARANTEE FOR  
CONSTRUCTION AND  
INTERIOR FINISHING

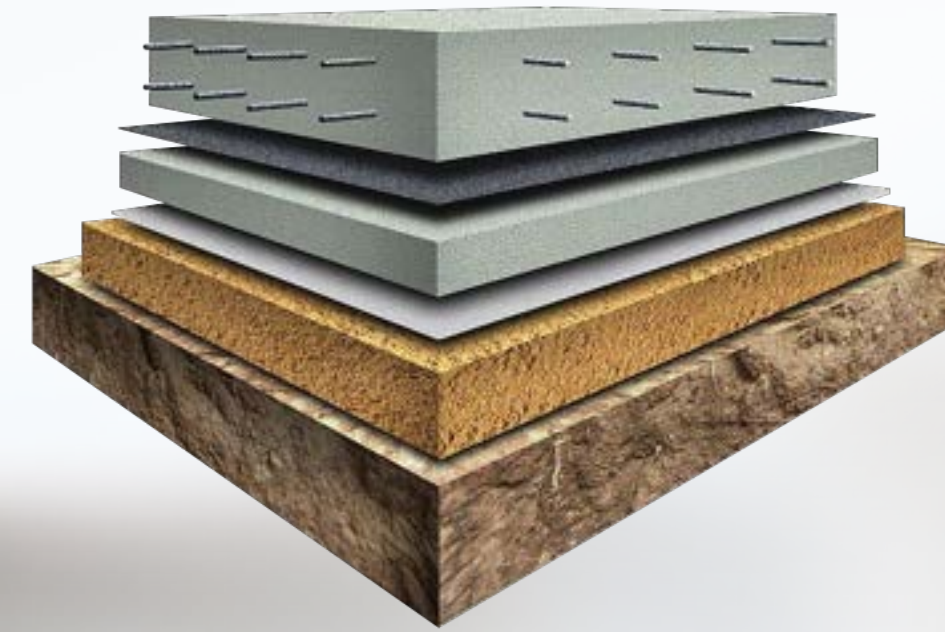
ADVANCED MOISTURE  
REMOVAL AND  
VENTILATION SYSTEMS





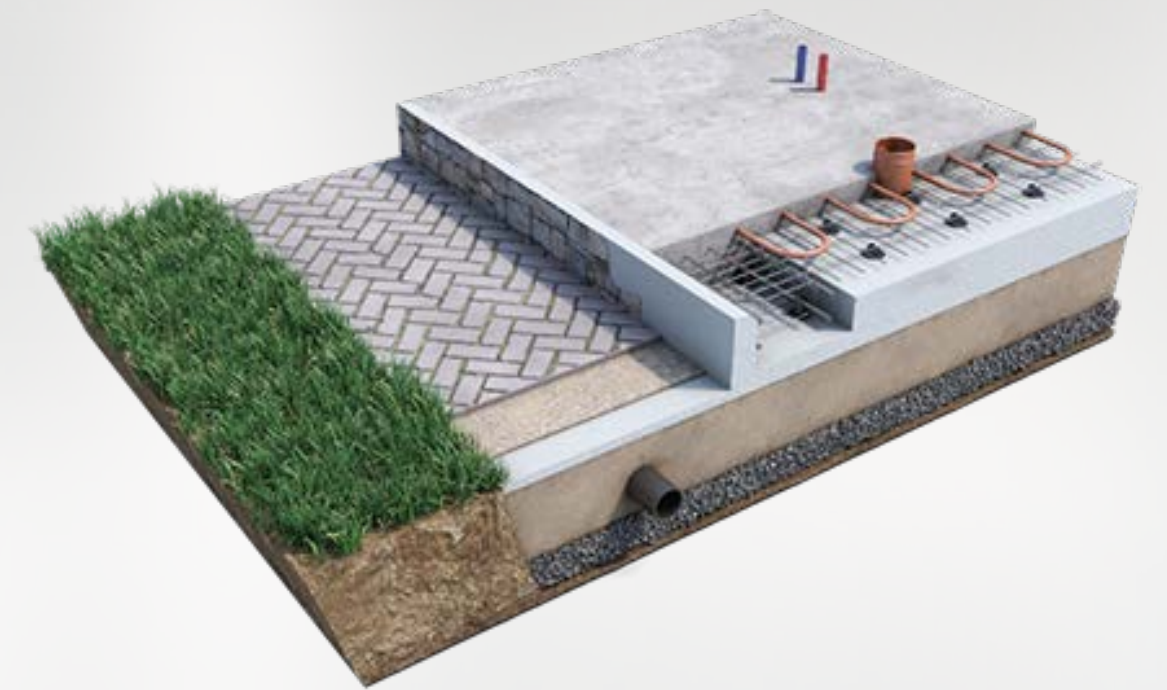
# TECHNOLOGY

All homes are built with the latest technology and are focused on comfort, durability and lower amortization costs



FOUNDATION  
-SWEDISH INSULATED SLAB

MONOLITHIC-FRAME  
CONSTRUCTION



GERMAN WINDOW  
PROFILES OF THE HIGHEST  
QUALITY CATEGORY





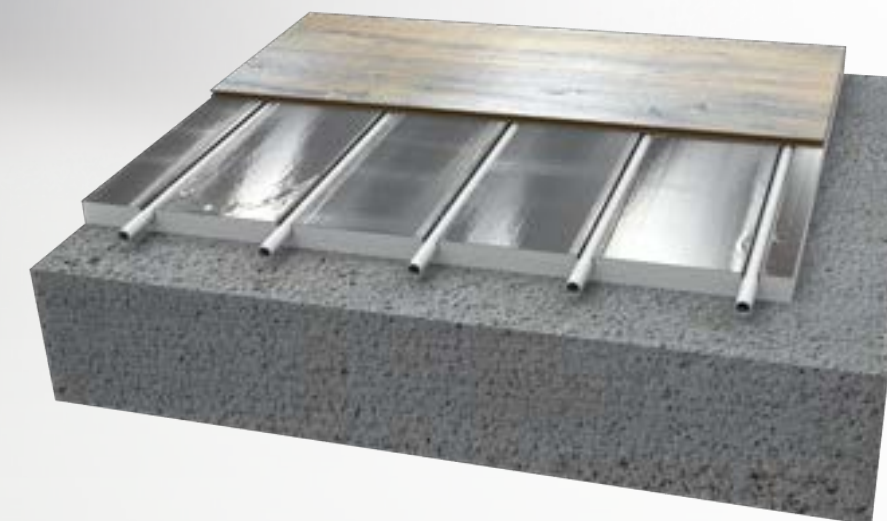
# TECHNOLOGY

Optional electric and hybrid powertrain vehicle charging stations are available as an option

RECUPERATION SYSTEM FOR CLEAN AIR, WITH INSTALLATION OF A CO2 SENSOR IN ALL LIVING AREAS



AEROMETRIC BOILER FOR HOT WATER AND HEATING



CLASS A+ ENERGY CONSUMPTION OF THE "THERMOS" MODE IN THE HOUSE



UNDERFLOOR HEATING AND HIGH QUALITY FINISHES IN THE KITCHEN AND BATHROOMS









# ADDITIONAL OPTIONS

We work with leading architectural bureaus, and create unique solutions, under the specific wishes of the customer



01

SMART HOME WITH  
AUTOMATION AND  
CONTROL

02

INSTALLATION OF A  
SOLAR POWER PLANT  
ON THE ROOF

03

LANDSCAPING  
AND OTHER  
OPTIONS

04

VIDEO SURVEILLANCE SYSTEM  
AND PERIMETER MOTION  
DETECTORS

05

BUTTON GATES  
AND SECURITY  
SYSTEMS AJAX



# TECHNOLOGY

All of our facilities are state-of-the-art in construction, housing and infrastructure management.

SMART MOISTURE REMOVAL AND VENTILATION SYSTEM

ENERGY RESOURCE CONSUMPTION OPTIMIZATION SYSTEM

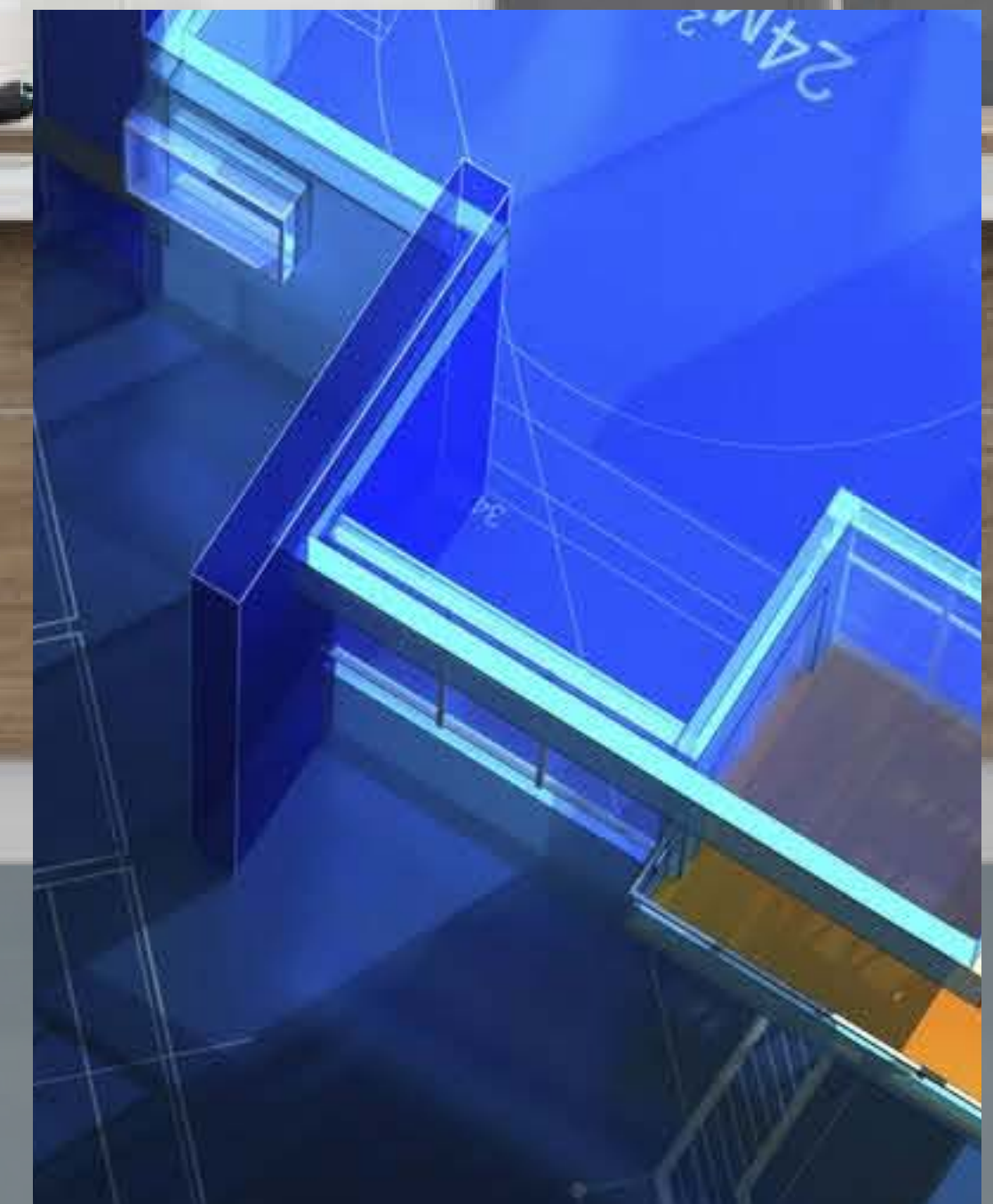
Savings on energy costs of up to

# 90%

when installing an SES

Water consumption

# -41%





## TECHNOLOGY

Energy-efficient lighting

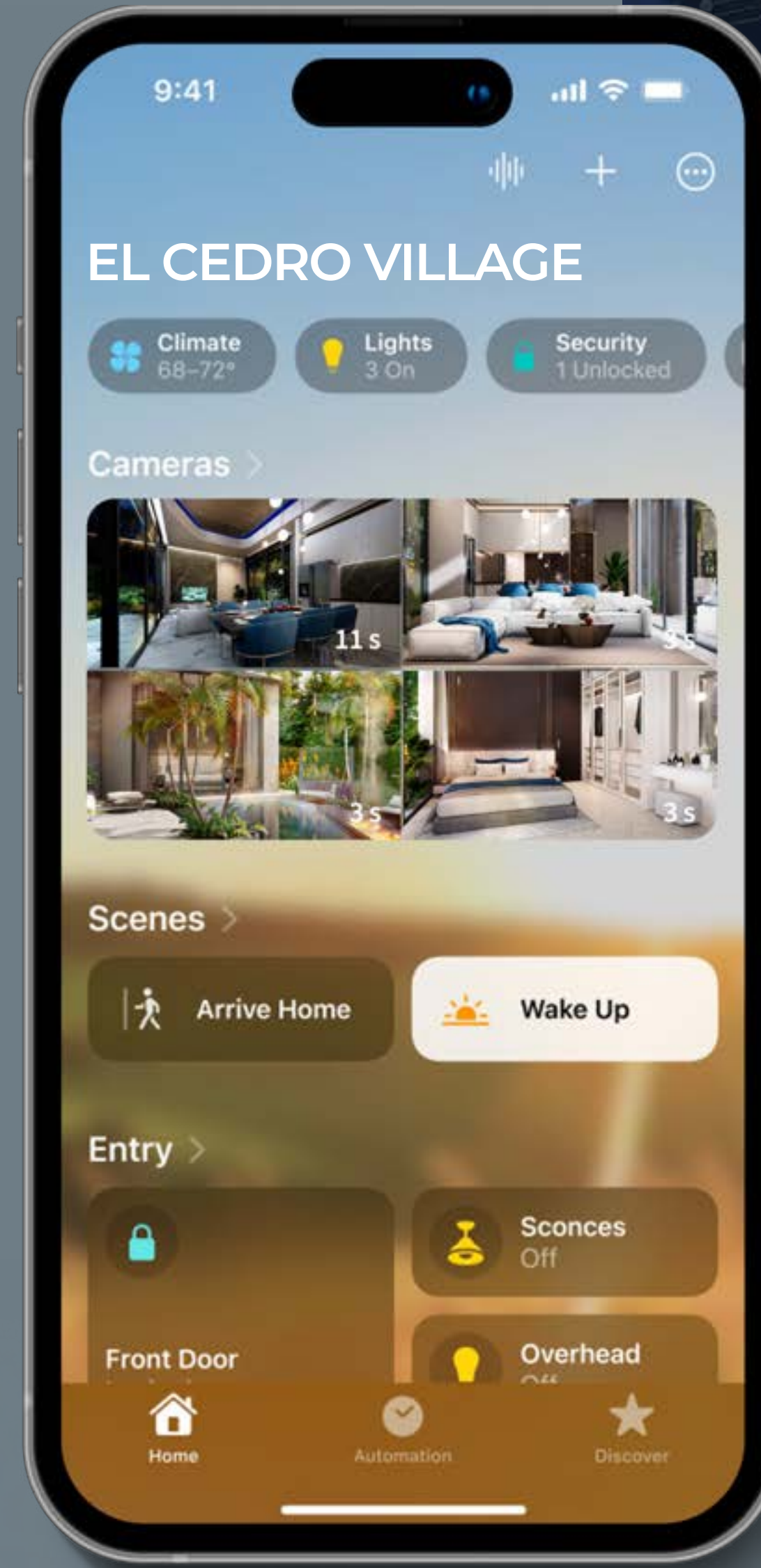
savings of up to

# 80%



power consumption  
electricity

# -15%



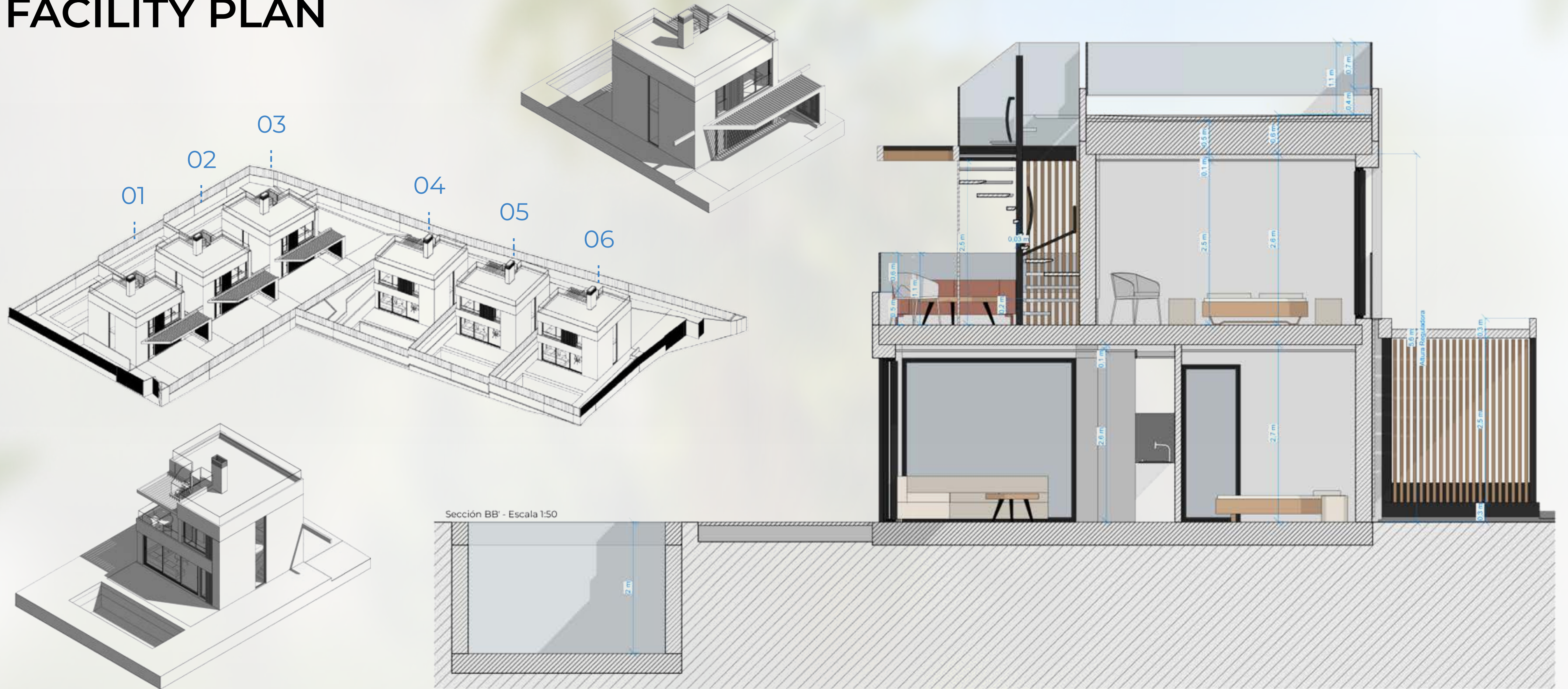
Intelligent system  
node control  
system  
(optional  
equipment)







# FACILITY PLAN

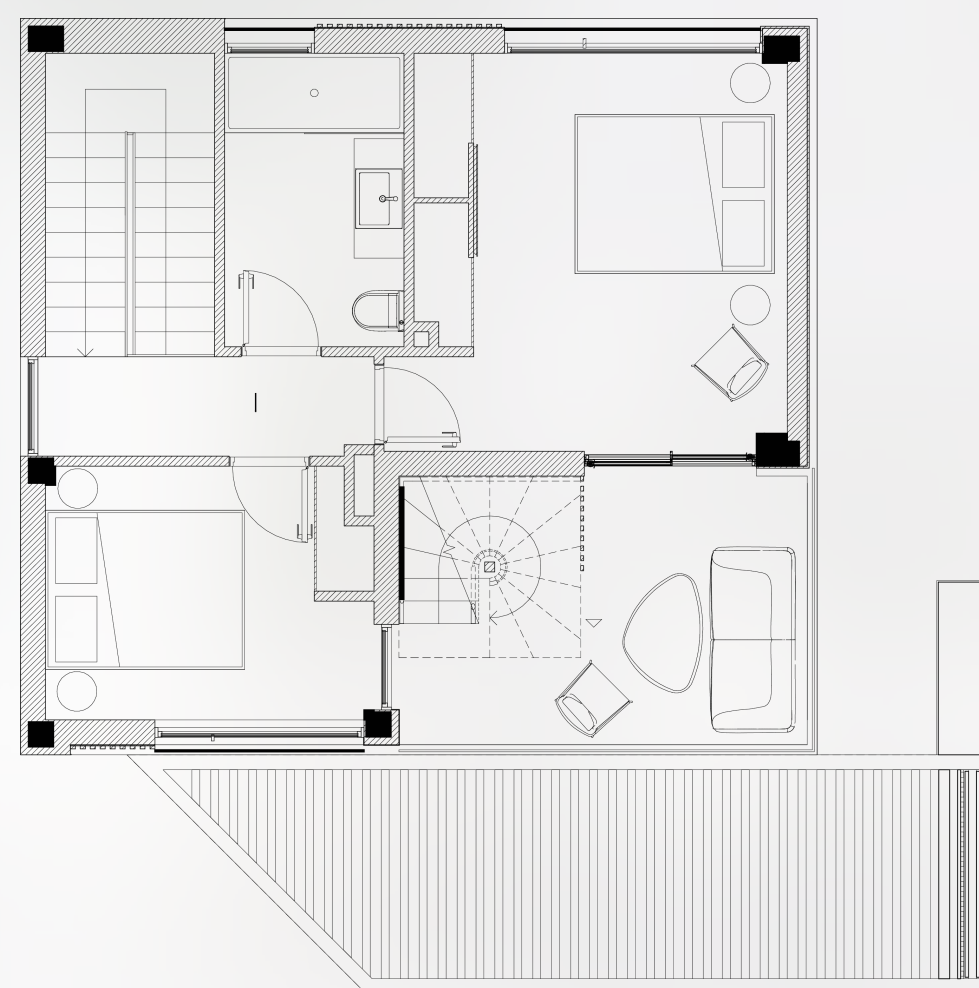
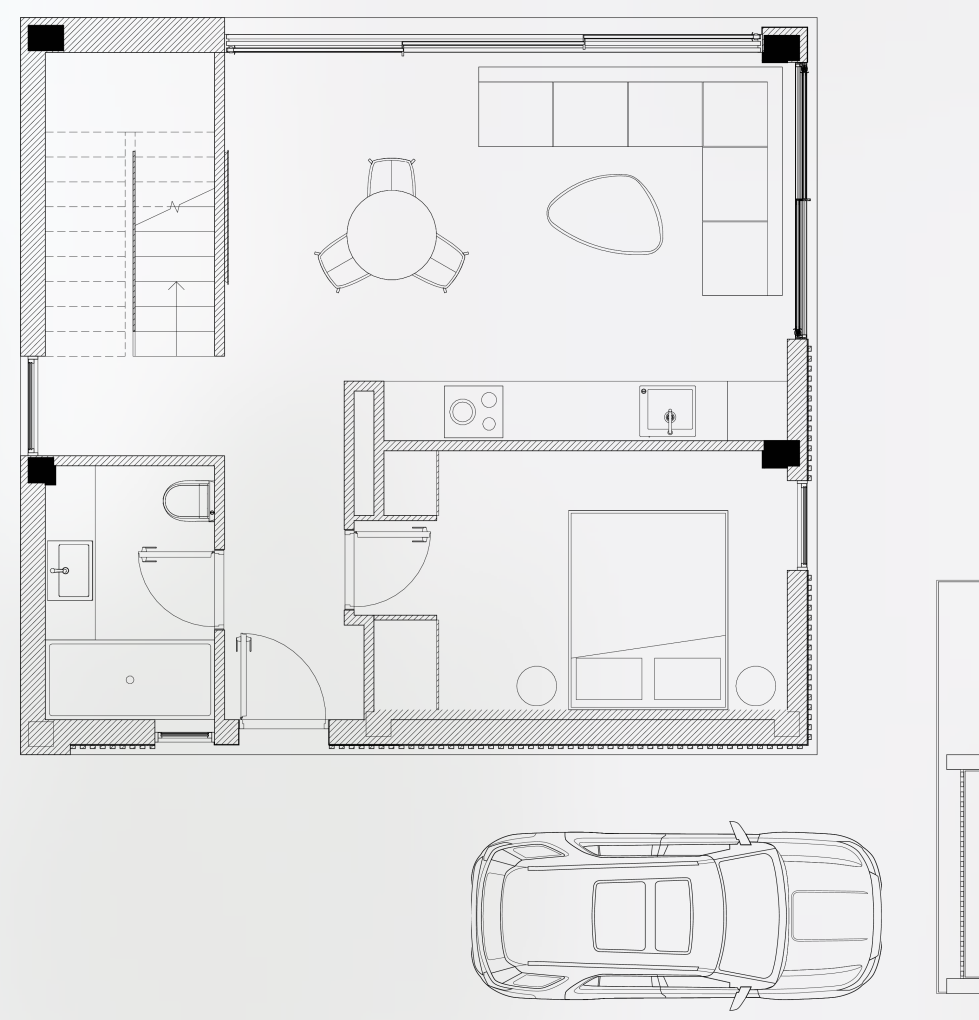
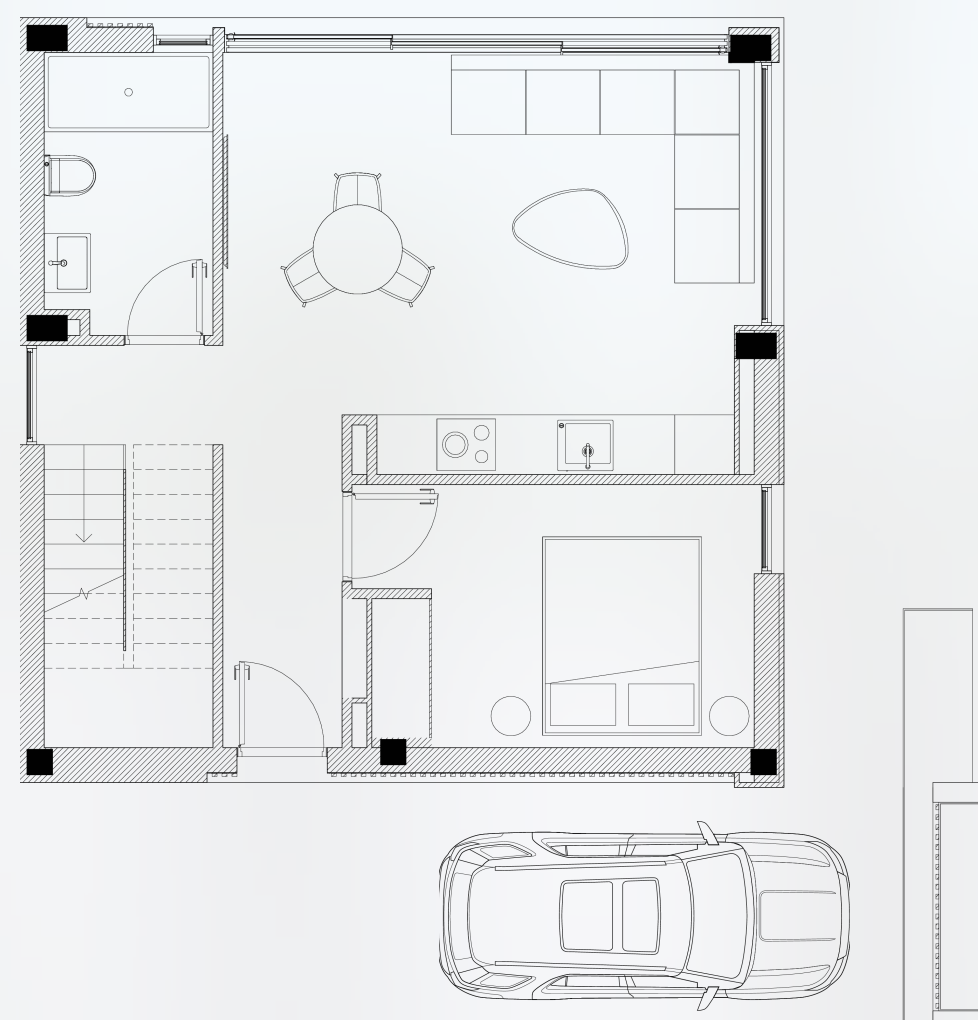








# HOUSE LAYOUTS



Вариант 1

Вариант 2





## EQUIPMENT OPTIONS

### COMFORT

1

Includes finishes and basic amenities: kitchen, fitted closets, lamps, sockets, switches, w/c, pool, underfloor heating, aerothermometrics

### COMFORT PLUS

2

**+ 9000 €**  
to the price of "comfort"

Includes Comfort package + is complemented by heated pool, solarium, recuperation system, and landscaping

### TITANIUM

3

**+ 47000 €**  
to the price of "comfort"

Includes package "Comfort Plus, + furniture, solar panels and smart home system



# PRICE

# TERMS OF PAYMENT

Nº	Location	Price, €
Nº6	from the edge	372 000
Nº1, Nº3, Nº4	on the center section	360 000
Nº5, Nº2	between the villas	348 000

Standard payment schedule	Amount or % of value to be contributed	Payment term
1 installment	12 000 €	Immediately upon conclusion of the contract
2 installment	40% of the cost of a villa	3 months after the first installment
3 installment	30% of the cost of a villa	8 months after the first installment
3 installment	26-27% (balance of the amount)	When commissioning

## LOYALTY SYSTEM

**1%**

discount on the amount of the contribution for each month of earlier payment of the contribution. i.e. if the second installment is paid immediately upon signing the contract, the amount of the contribution will be discounted by 3%.

**10%**

discount on the entire amount when you pay 50% of the villa price at once

**15%**

discount on the entire amount when you pay 70% of the villa price at once



20 | 20

## CONTACTS

### SALES DEPARTMENT



**+34 865 44 30 12**