

# RESIDENTIAL "THE ISLAND3"

## TOP FLOOR

BUILD SURFACE  
79.46 m<sup>2</sup>

TERRACE SURFACE  
6.35 m<sup>2</sup>

APARTMENT TYPE

1.22 1.24

SOLARIUM SURFACE  
44.60 m<sup>2</sup>

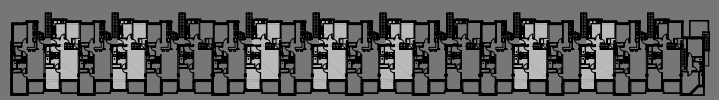
TOTAL SURFACE  
130.41 m<sup>2</sup>

1.28  
1.30  
1.32  
1.36  
1.38

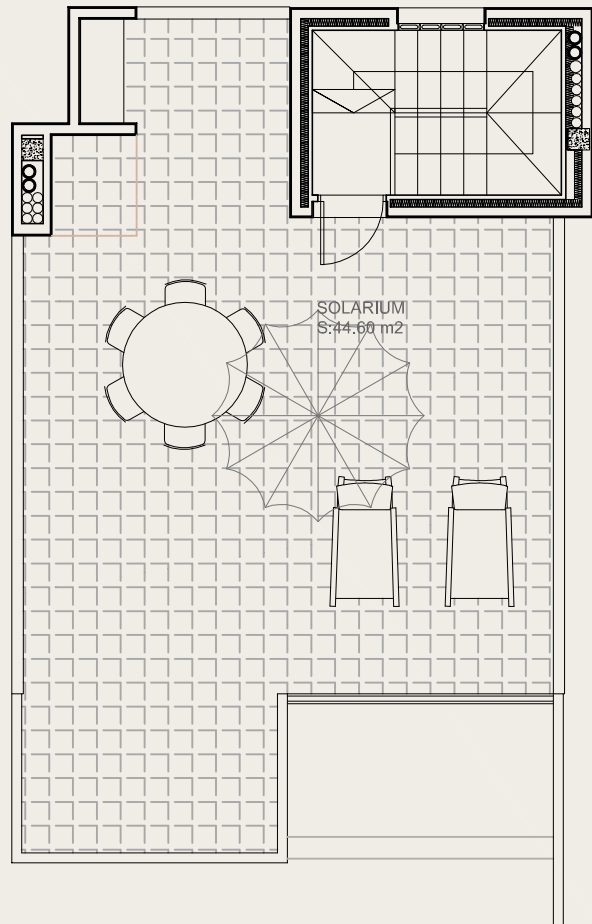
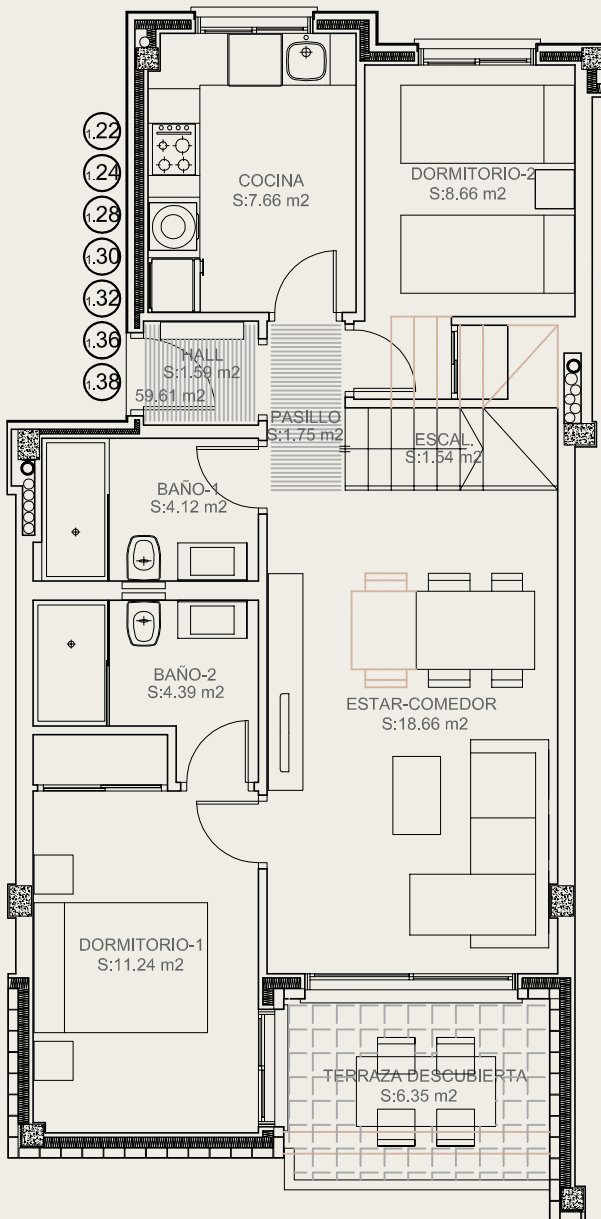
AVDA. CORCEGA



CALLE GOMERA



AVDA. TENERIFE



THESE PLANS HAVE BEEN MADE BY MEANS OF THE BASIC PROJECT AND THEY CAN SUFFER MODIFICATIONS DURING THE BUILT  
ESTOS PLANOS HAN SIDO REALIZADOS EN BASE AL PROYECTO BASICO, PUDIENDO SUFRIR MODIFICACIONES DURANTE LA EJECUCION

ENTREGA: DICIEMBRE 2025  
VAILLO Y DIAZ, P.G.I. S.A.U