

# RESIDENTIAL "THE ISLAND3"

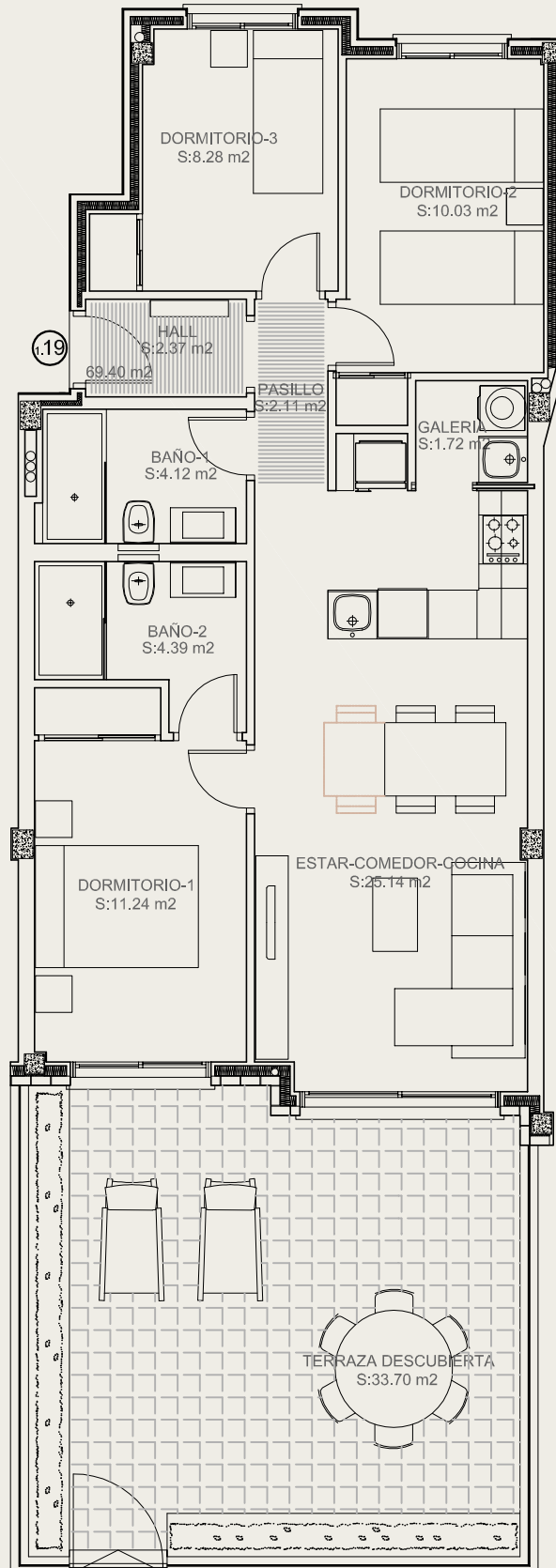
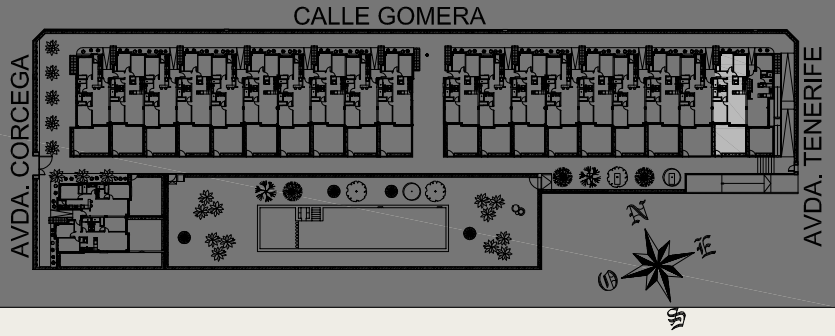
**GROUND FLOOR**

**APARTMENT TYPE 1.19**

**BUILD SURFACE 79.96 m<sup>2</sup>**

**TERRACE SURFACE 33.70 m<sup>2</sup>**

**TOTAL SURFACE 113.66 m<sup>2</sup>**



THESE PLANS HAVE BEEN MADE BY MEANS OF THE BASIC PROJECT AND THEY CAN SUFFER MODIFICATIONS DURING THE BUILT  
ESTOS PLANOS HAN SIDO REALIZADOS EN BASE AL PROYECTO BASICO, PUDIENDO SUFRIR MODIFICACIONES DURANTE LA EJECUCION

ENTREGA: DICIEMBRE 2025  
**VAILLO Y DIAZ, P.G.I. S.A.U**