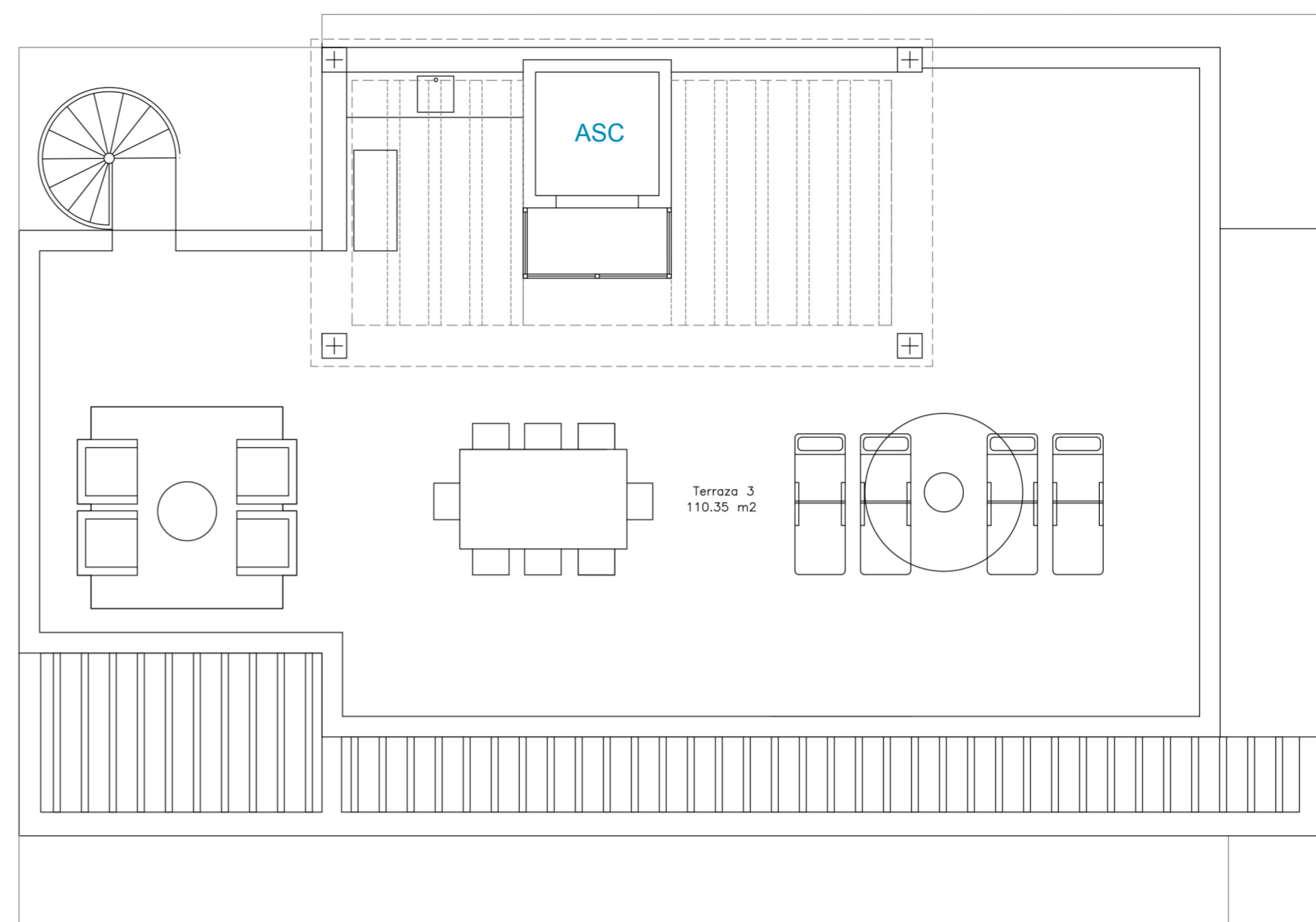
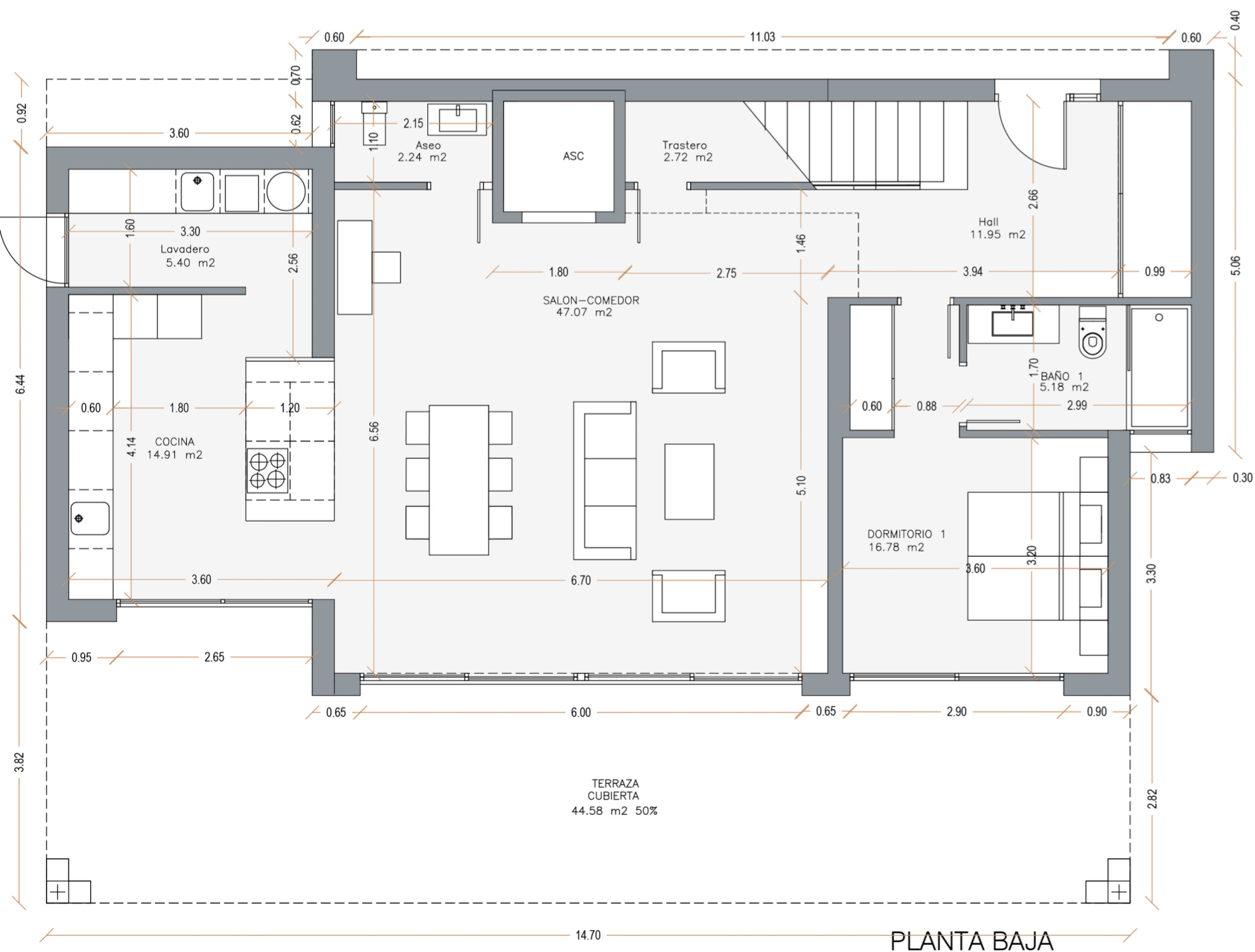


PLANTA ALTA



PLANTA CUBIERTA



PLANTA BAJA

Ground floor	
Hall	= 11.95 m ²
Salon - comedor	= 47.07 m ²
Cocina	= 14.91 m ²
Lavadero	= 5.40 m ²
Dormitorio 1	= 16.72 m ²
Baño 1	= 5.18 m ²
Aseo	= 2.24 m ²
Trastero	= 2.72 m ²
ground floor Surface Interior 106.19 m ²	
ground floor Total Surface Built 121.70 m ²	
Terraza = 44.58 m ²	
1st floor	
Distribution	= 12.74 m ²
Bedroom 1	= 14.61 m ²
Bedroom 2	= 14.77 m ²
Bedroom 3	= 14.77 m ²
Bedroom 4	= 14.61 m ²
Bath 1	= 5.18 m ²
Bath 2	= 4.49 m ²
1st floor Surface Interior 81.17 m ²	
1st floor Total Surface Built 97.11 m ²	
Terraza = 41.71 m ²	
TOTAL	
Total house Surface Interior	187.36 m ²
Total house Surface Built	218.81 m ²
Total house Terraces	86.79 m ²
Top solarium Terrace	110.35 m ²

HOUSE 1B - C/ Cordoba (Calahonda)