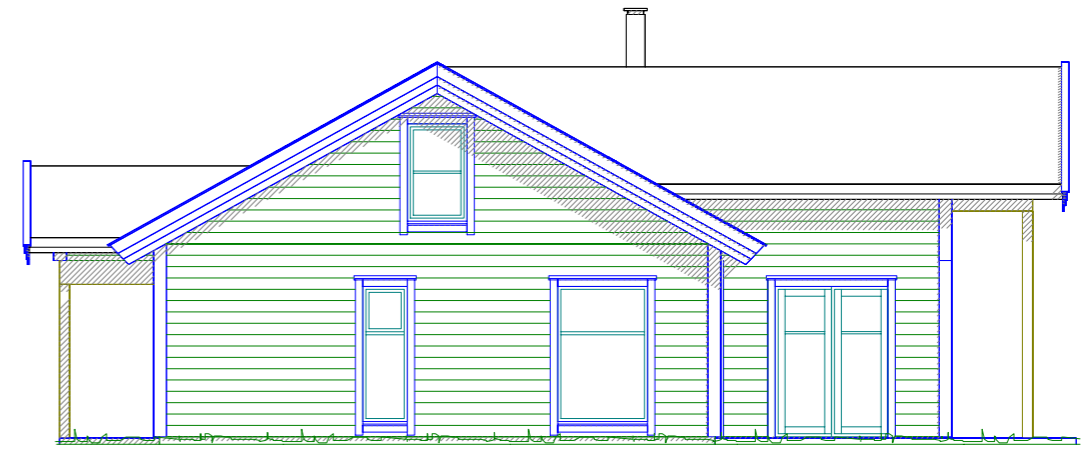
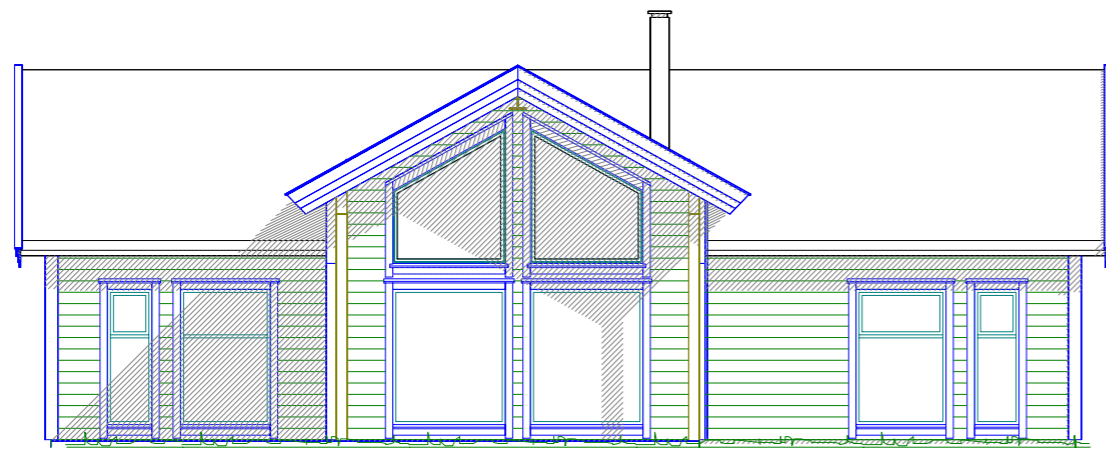


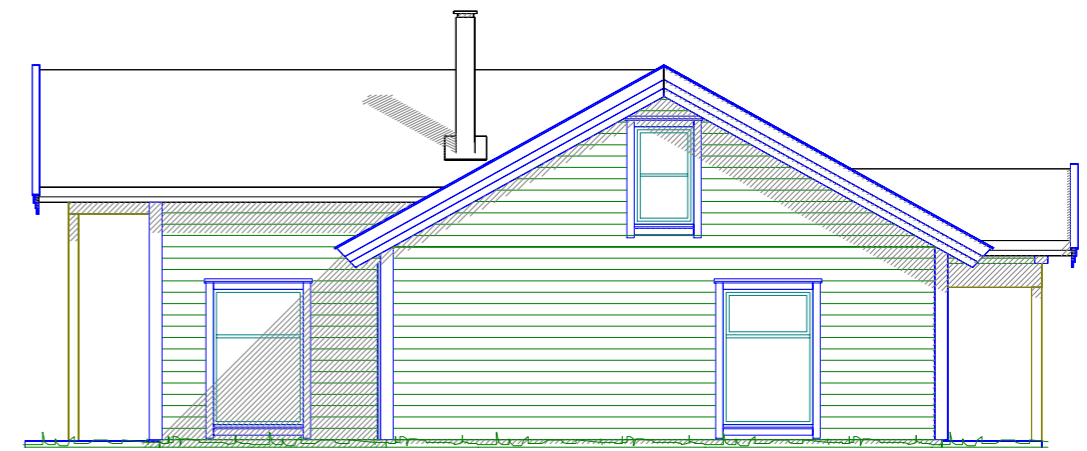
Fasade 1



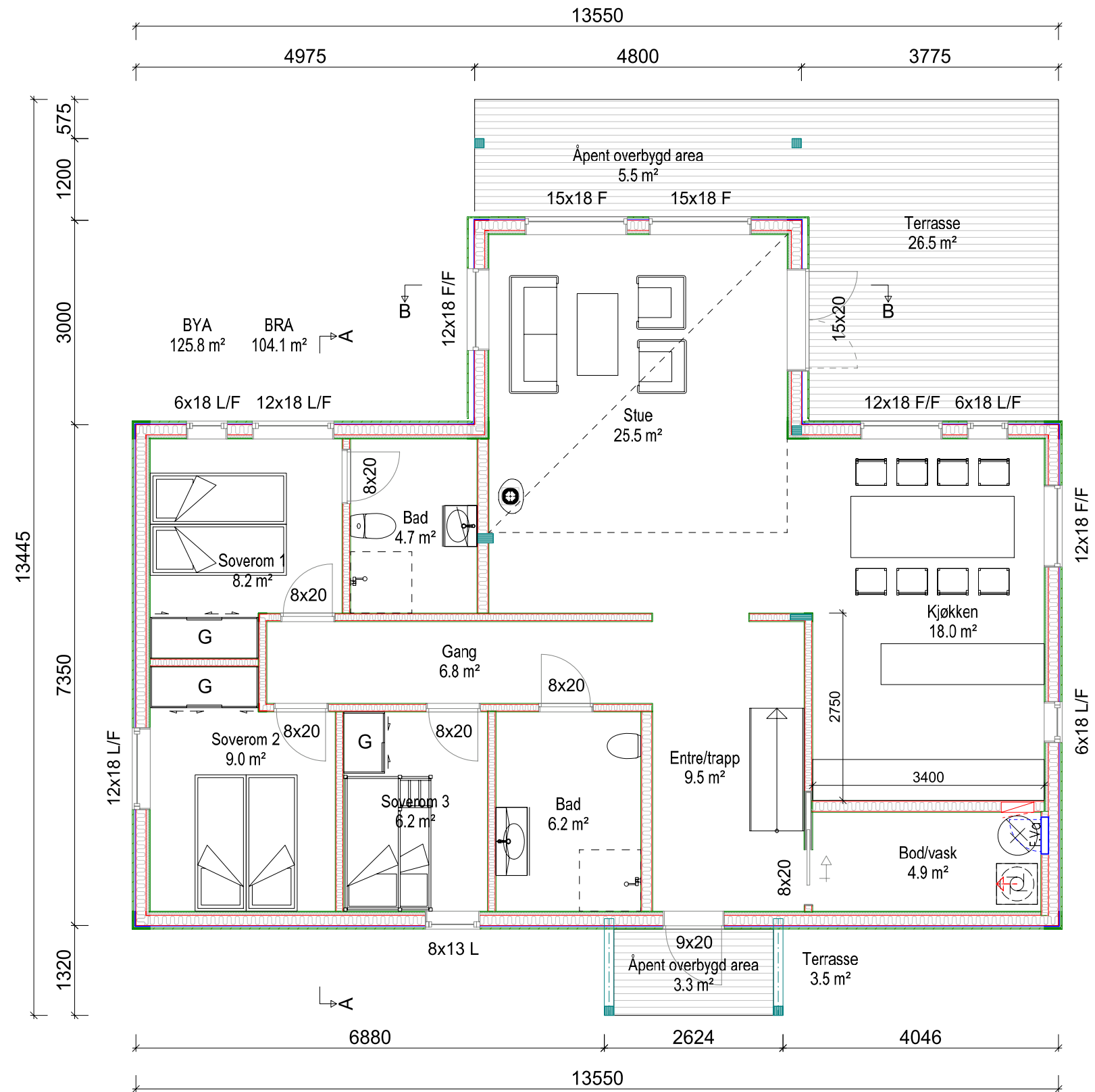
Fasade 2



Fasade 3



Fasade 4



Primærrom (P-ROM):	104,1m ²
Bruksareal (BRA):	104,1m ²
Bruttoareal (BTA):	116,9m ²
Grunnflate:	116,9m ²
Boligareal (BOA):	104,1m ²
Totalt gulvareal:	145,1m ²

