

11 Total Room Schedule

Number:	Name:	Area (m ²):	Perimeter (m):	Comments:
0	Storage	1.6	5.1	
1	Entrance	5.6	9.6	
2	Bedroom	6.2	10.0	
3	Kitchen / Livingroom	45.0	30.8	
4	Bod	3.7	8.3	
5	Bathroom	3.8	7.8	
6	Bathroom	5.4	9.3	
7	Sauna	3.1	7.2	
8	Bedroom	9.4	12.4	
9	Bedroom	6.8	10.6	
10	Hallway	6.7	14.1	
11	Bedroom	14.6	15.7	
12	Bedroom	14.6	15.7	
13	Loft	24.4	24.6	
14	External Storage	Not Placed	Not Placed	
Grand total:		15	150.8	181.1

01 External Wall Schedule

No.:	Type:	Area (m ²):	Thickness (mm):	Comments:
2.1.1.	OW_95(100)_UYSK/OSB	13	203	
2.1.3.	OW_145(200)_OSB/WB	3	216	<varies>
2.1.4.	OW_145(200)_UYSK/GKB	9	209	<varies>
2.1.5.	OW_145(200)_UYSK/GKB (loose)	2	289	
2.1.6.	OW_145(200)_UYSK/PTRG+GKB	11	319	<varies>
2.1.7.	OW_145(200)_UYSK/WB	98	300	<varies>
2.1.8.	OW_145(200)_UYSK/WB (loose)	40	300	<varies>
Grand total:		176		

02 Internal Wall Schedule

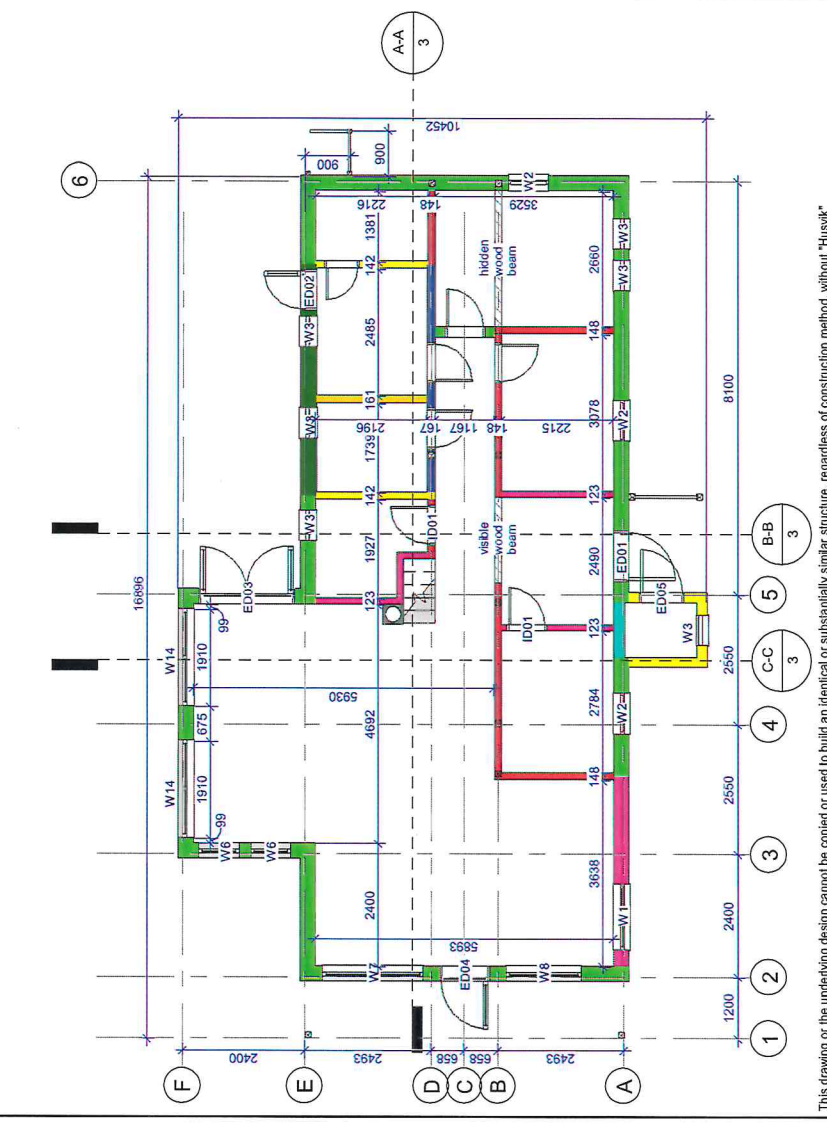
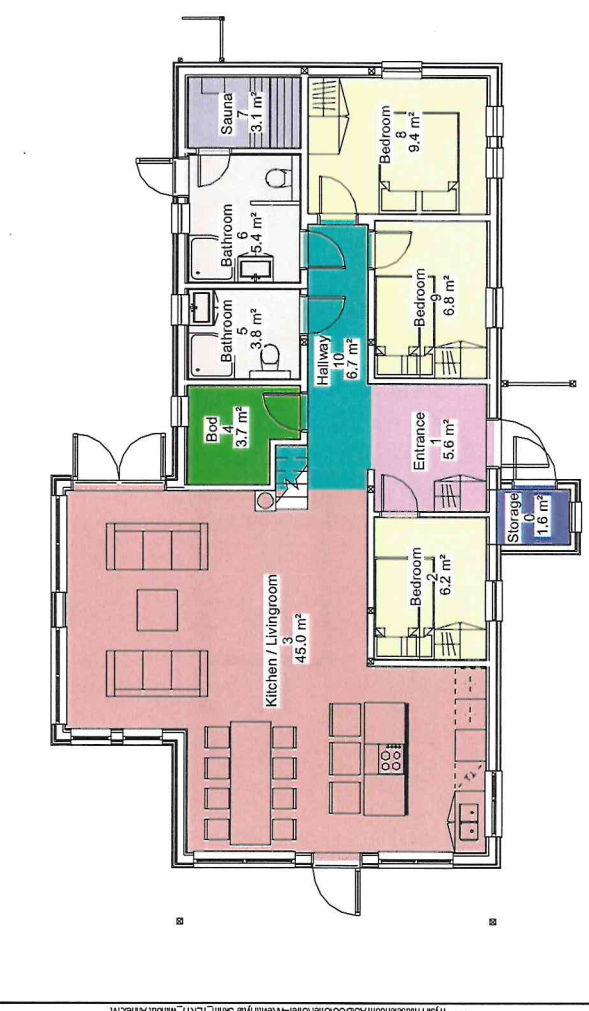
No.:	Type:	Area (m ²):	Thickness (mm):
2.2.1.	IW_95(100)_GKB+PTRG/WB	11	142
2.2.2.	IW_95(100)_WB/WB	31	123
2.2.3.	IW_120(125)_GKB+PTRG/GKB	10	167
2.2.4.	IW_95(100)_GKB+PTRG/GKB+PTRG	5	161
2.2.5.	IW_120(125)_GKB/WB	10	147
2.2.6.	IW_120(125)_WB/WB	39	148
Grand total:		106	

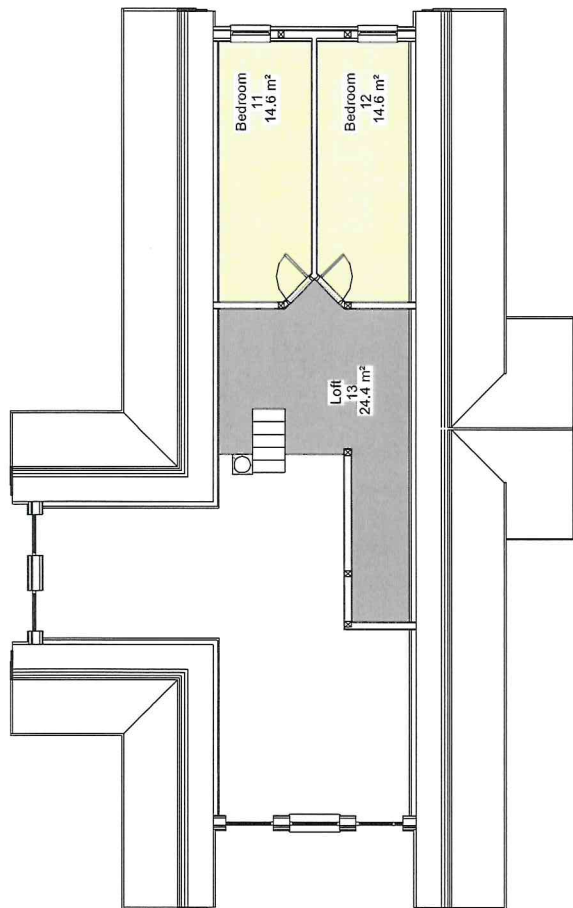
- OW_95(100)_UYSK/OSB
- OW_145(200)_OSB/WB
- OW_145(200)_UYSK/GKB
- OW_145(200)_UYSK/GKB (loose)
- OW_145(200)_UYSK/PTRG+GKB
- OW_145(200)_UYSK/WB
- OW_145(200)_UYSK/WB (loose)
- IW_95(100)_GKB+PTRG/WB
- IW_95(100)_WB/WB
- IW_120(125)_GKB+PTRG/GKB
- IW_95(100)_GKB+PTRG/GKB+PTRG
- IW_120(125)_GKB/WB
- IW_120(125)_WB/WB

Revision	Description	Drawing Date	REV.	REV. date
Designed by:	-	2021.06.17.		
Approved by:	-			

Project name/Address:
Fjellmora Lodge (Hytte Skirtm)
 Husvik, SA
 Zinnarefjorden, Skarvåsen
 ASG Havnemåla, 1001 HABA/LVZ
 Postboks 4000/0918
 Kviteseid
 Kaste UYSSANA 0510/0500

Scale: 1 : 100
 Sheet: 1
 Set number:





11 Total Room Schedule

Number:	Name:	Area (m2):	Perimeter (m):	Comments:
0	Storage	1.6	5.1	
1	Entrance	5.6	9.6	
2	Bedroom	6.2	10.0	
3	Kitchen / Livingroom	45.0	30.8	
4	Bed	3.7	6.3	
5	Bathroom	3.8	7.8	
6	Bathroom	5.4	9.3	
7	Sauna	3.1	7.2	
8	Bedroom	9.4	12.4	
9	Bedroom	6.8	10.6	
10	Hallway	6.7	14.1	
11	Bedroom	14.6	15.7	
12	Bedroom	14.6	15.7	
13	Loft	24.4	24.6	
14	External Storage	Not Placed	Not Placed	
Grand total: 15		150.8	181.1	

01 External Wall Schedule

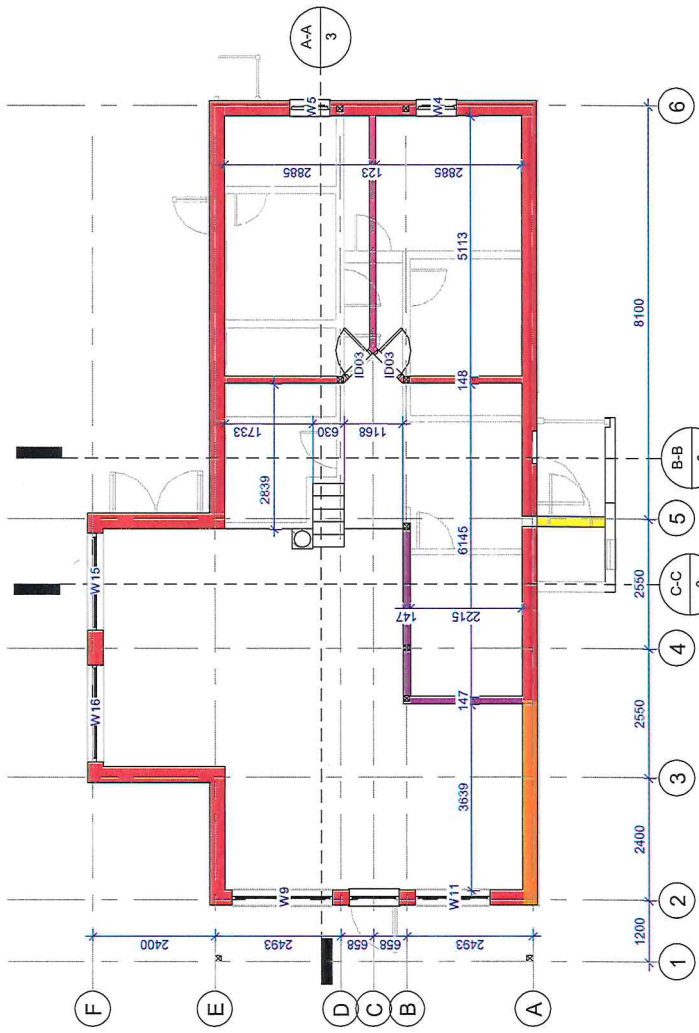
No.:	Type:	Area (m2):	Thickness (mm):	Comments
2.1.1.	OW_95(100)_UYSK/OSB	13	203	
2.1.3.	OW_145(200)_OSB/WB	3	216	<varies>
2.1.4.	OW_145(200)_UYSK/GKB	9	299	<varies>
2.1.5.	OW_145(200)_UYSK/GKB (loose)	2	299	<varies>
2.1.6.	OW_145(200)_UYSK/PTRG+GKB	11	319	<varies>
2.1.7.	OW_145(200)_UYSK/WB	98	300	<varies>
2.1.8.	OW_145(200)_UYSK/WB (loose)	40	300	<varies>
Grand total		176		

02 Internal Wall Schedule

No.:	Type:	Area (m2):	Thickness (mm):
2.2.1.	IW_95(100)_GKB+PTRG/WB	11	142
2.2.2.	IW_95(100)_WB/WB	31	123
2.2.3.	IW_120(125)_GKB+PTRG/GKB	10	167
2.2.4.	IW_95(100)_GKB+PTRG/GKB+PTRG	5	161
2.2.5.	IW_120(125)_GKB/WB	10	147
2.2.6.	IW_120(125)_WB/WB	39	148
Grand total		106	

- Yellow: OW_95(100)_UYSK/OSB
- Cyan: OW_145(200)_OSB/WB
- Pink: OW_145(200)_UYSK/GKB
- Orange: OW_145(200)_UYSK/GKB (loose)
- Dark Green: OW_145(200)_UYSK/PTRG+GKB
- Light Green: OW_145(200)_UYSK/WB
- Red: OW_145(200)_UYSK/WB (loose)
- Yellow-Green: IW_95(100)_GKB+PTRG/WB
- Pink-Red: IW_95(100)_WB/WB
- Blue-Red: IW_120(125)_GKB+PTRG/GKB
- Orange-Red: IW_95(100)_GKB+PTRG/GKB+PTRG
- Purple-Red: IW_120(125)_GKB/WB
- Red-Orange: IW_120(125)_WB/WB

M. Orville



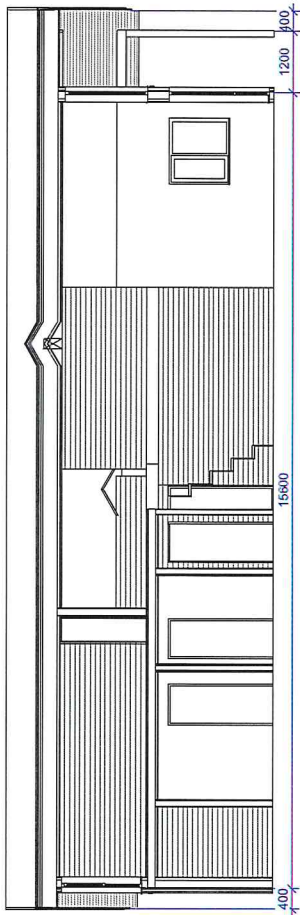
Revision	Description	Drawing Date	REV.	REV. date
Designed by:	-	2021.06.17.		
Approved by:				

Project name/Address:
Fjellmora Lodge (Hylte Skrim)
 Husvik SA
 "Zvezda", Mørkeveien, Skjolden 1
 AS Hovsletta, 1000 Hovsletta
 Postboks 1000, 1000 Hovsletta
 Tlf: +47 90000000

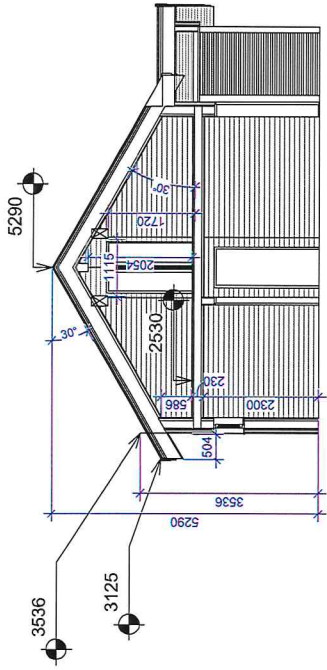
Scale: 1 : 100
 Sheet: 2
 Set number: 2

2nd Floor

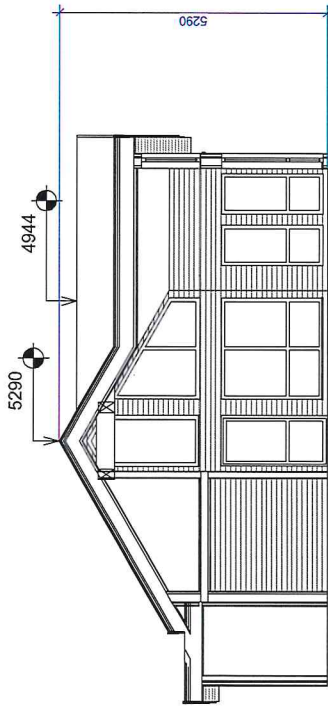
A-A Section A-A
1 : 100



B-B Section B-B
1 : 100



C-C Section C-C
1 : 100



03 Floor / Terrace / Balcony Schedule			
No.	Type:	Area (m2):	Thickness (mm):
3.1.	FL_145(100)_CONWB	61	230
Grand total		61	

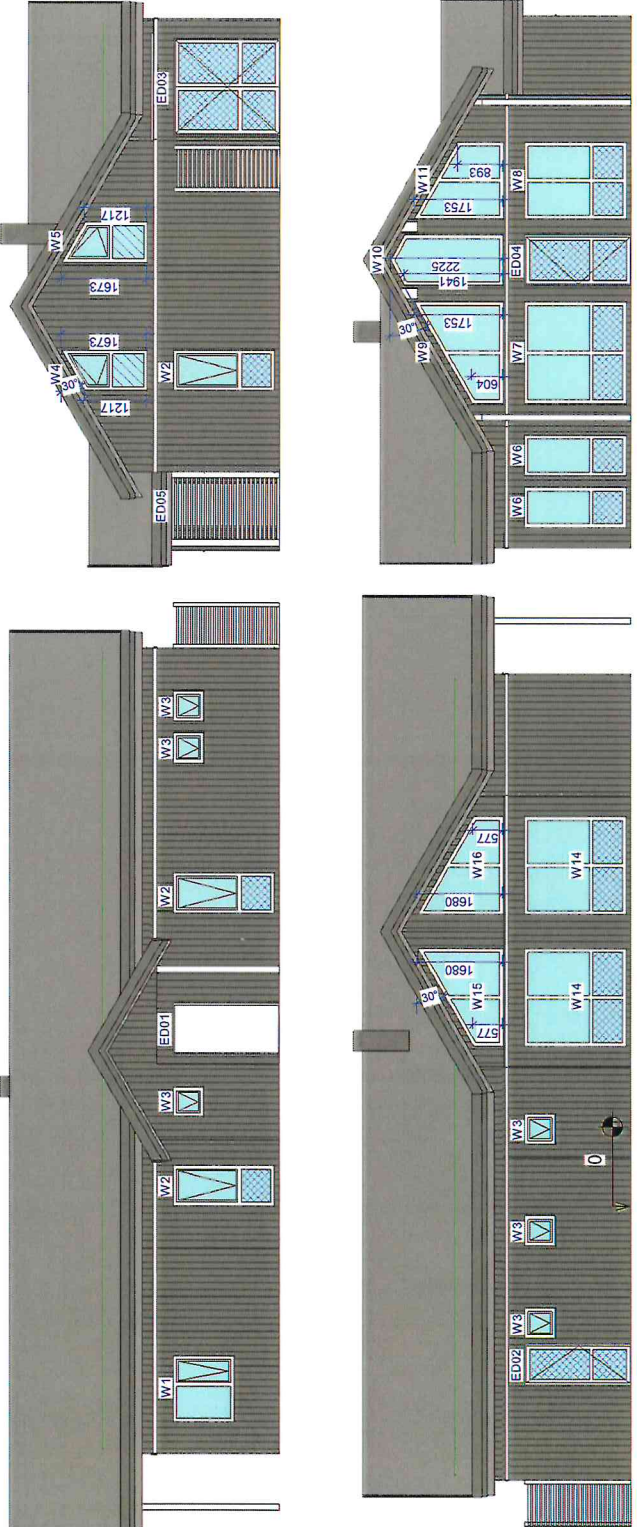
04 Roof Schedule			
No.:	Type:	Area (m2):	Thickness (mm):
4.3.	RF_195(0)_Wood boards/100	10	322
4.4.	RF_245(0)_OSB/100	40	371
4.5.	RF_245(300)_OSB/WB	127	409
4.6.	CL_95(0)_0/100	3	111
Grand total		180	

M. Brundt

Revision	Description	Drawing Date	REV.	REV. date
Designed by:	-	2021.06.17.		
Approved by:	-			

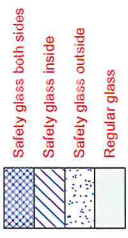
<p>HUSVIK SA Korsettsveien 10, 0684, Oslo A/S Husvik, Løst 1884/LV2 PNN, LV402/3709 Korsettsveien 10, 0684, Oslo</p>	<p>Project name/Address: Fjellmora Lodge (Hyte Skrim) Morsveien 230, Jordal, Trondheim, Norway</p>
<p>HUSVIK —nordic houses—</p>	<p>Project number: 210501 Scale: 1 : 100 Sheet: 3</p>
<p>Sections</p>	

This drawing or the underlying design cannot be copied or used to build an identical or substantially similar structure, regardless of construction method, without Husvik's written permission.



07 Total Window Schedule

Mark:	Width (mm):	Height (mm):	Count (pcs):	Area (m2):	Sill Height (mm):	Head Height (mm):	Comments
W1	1250	1205	1	1.6	885	2090	
W2	790	2000	3	4.7	90	2090	
W3	590	605	6	2.1	1485	2090	
W4	790	1673	1	1.3	75	1748	
W5	790	1673	1	1.3	75	1748	
W6	790	2000	2	3.2	90	2090	sun reduction
W7	1990	2000	1	4.0	90	2090	sun reduction
W8	1490	2000	1	3.0	90	2090	sun reduction
W9	1990	1753	1	3.5	-15	1738	sun reduction
W10	890	2225	1	2.2	-15	2210	sun reduction
W11	1490	1753	1	2.6	-15	1738	sun reduction
W14	1910	2000	2	7.6	90	2090	sun reduction
W15	1910	1680	1	3.2	-15	1665	sun reduction
W16	1910	1680	1	3.2	-15	1665	sun reduction
Grand total			23	43.6			



08 External Door Schedule

Mark:	Width (mm):	Height (mm):	Sill Height (mm):	Head Height (mm):	Area (m2):	Comments:
ED02	788	2090	1	0	1.6	frosted glass
ED03	1888	2090	1	0	3.9	
ED04	988	2090	1	0	2.1	sun reduction
Grand total			3		7.7	

M. Brundt

Revision	Description	Drawing Date	REV.	REV. date
Designed by:		2021.06.17.		
Approved by:				
<p>HUSVIK SA Zonover, Mossveien 10, Skjold AS Husvik, Lucc 168ALV2 Reg.Nr. 000270949 Korr. L155188A, 0510/2019/70</p>		Project name/Address: Fjellmora Lodge (Hytte Skrim)		
		Project number: 210501		
		Scale: As indicated		
		Sheet: 4		
		Set number:		
		Facades		




Alvbrude

Revision	Description	Drawing Date	REV.	REV.
Designed by:	-	2021.06.17.		date
Approved by:	-			
		Project name/Address:	Project number: 210501	
<small>HUSVIK SIA Bossetorvets Skole Zonen AS Hestevikveien, 1050 HUSVIK P.O. Box 100, 1000 P.O. Box 100, 1000 Kjøle LYSBARN, 0501 LYSEBARN</small>		Fjellmora Lodge (Hylte Skrim)	Scale:	
		Blomsten 239 Jordet, Trysil, Norway	Sheet: 5	
		Title:	Set number:	
			3D	



Albründe

Revision	Description	Drawing Date	REV.	REV. date
Designed by:	-	2021.06.17.		
Approved by:	-			
 HUSVIK, SA Zentrale, Messingstr. 34, 4013 AGS Hausbau, Loch HILV22 REG-Nr. 400037998 Korte 1:5000000		Project name/Address: Fjellmora Lodge (Hylte Skrim) Marwegen 2410 Jordal, Trondheim, Norway	Project number: 210501	
			Scale:	
			Sheet:	6
			Set number:	
			3D	